



CONTENTS

Editorial

Title of scientific papers

B Sivapathasundharam 1

Original Research

Osteoblast response to commercially available demineralized bone matrices — An *in-vitro* study

S Thanga Kumaran, KV Arun, Sabitha Sudarsan, Avaneendra Talwar, N Srinivasan 3

Evaluation of circulating immune complexes and serum immunoglobulins in oral cancer patients - A follow up study

Sameena Parveen, Neeraj Taneja, Renuka J Bathi, AC Deka 10

Occlusal morphology of mandibular second molars in Iranian adolescents

Ramin Mosharraf, Behnaz Ebadian, Zeilabi Ali, Akhlaghi Najme, Shamashian Niloofer, Karimi Leila 16

The effect of smoking on gingival crevicular fluid levels of myeloperoxidase

Balwant Rai, Jasdeep Kaur, SC Anand, Kuldeep Laller 20

Tensile properties of orthodontic elastomeric ligatures

F Ahrari, T Jalaly, M Zebarjad 23

Antibacterial effect of bioactive glass in combination with powdered enamel and dentin

AR Prabhakar, Santhosh CH Kumar 30

Coronal leakage of four intracanal medications after exposure to human saliva in the presence of a temporary filling material

Rebeca Dibe Veríssimo, Eduardo Diogo Gurgel-Filho, Gustavo De-Deus, Tauby Coutinho-Filho, Francisco José de Souza-Filho 35

Endodontic sealers: Intratubular penetration and permeability to *Enterococcus faecalis*

Maria Cecília Tezelli Bortolini, Silvana Soléo Ferreira dos Santos, Sandra Márcia Habitante, Jane Rose Dias Dionísio Rodrigues, Rodrigo Vance, Antonio Olavo Cardoso Jorge 40

Four novel prosthodontic methods for managing upper airway resistance syndrome: An investigative analysis revealing the efficacy of the new nasopharyngeal aperture guard appliance

R Venkat, N Gopichander, M Vasantakumar 44

Influence of light-curing units and restorative materials on the micro hardness of resin cements

Rosiane Nogueira Kugumiya, Luciana Bastos Alves, Flávio Roberto Guerra Seabra, Carlos Frederico de Moraes Sarmento, Alex José Souza Santos, Claudia Tavares Machado 49

Comparison of the effect of hydrogel and solution forms of sodium ascorbate on orthodontic bracket-enamel shear bond strength immediately after bleaching: An *in vitro* study

Soodabeh Kimyai, Siavash Savadi Oskoe, Ali Rafighi, Hadi Valizadeh, Amir Ahmad Ajami, Zahra Norooz Zadeh Helali 54

Comparison of stress patterns and displacement in conventional cantilever fixed partial denture with resin bonded cantilever fixed partial denture: A finite element analysis

E Prashanti, S Sajjan, M Kumar 59

Effects of radio-opacifier addition in dental impression material

Eduardo Gonçalves Mota, Angela Rigo, Maria Ivete Bolzan Rockenbach, Nilza Pereira da Costa 63

***In vitro* comparative analysis of resistance to compression of laboratory resin composites and a ceramic system**

Alexandre Campos Montenegro, Cintia Fernandes do Couto, Paulo Roberto Rezende Ventura, Cresus Vinicius Depes Gouvêa, Aldir Nascimento Machado 68

Studies on development of controlled delivery of combination drug(s) to periodontal pocket

Gaurav Tiwari, Ruchi Tiwari, Awani K Rai 72

Oral health behavior and its determinants in a group of Iranian students

Hossain Neamatollahi, Masoumeh Ebrahimi 84

Prevalence of oral <i>Entamoeba gingivalis</i> and <i>Trichomonas tenax</i> in patients with periodontal disease and healthy population in Shiraz, southern Iran	
J Ghabanchi, M Zibaei, M Daghigh Afkar, AH Sarbazie.....	89
An <i>in vitro</i> study to evaluate the effect of storage time and application of subsequent layers on the variation in thickness of three commercially available die spacers	
Sunil J Jacob, Chethan Hegde, Krishna D Prasad, Manoj Shetty.....	92
<i>Ex vivo</i> evaluation of coronal and apical microbial leakage of root canal — Filled with gutta-percha or Resilon/Epiphany root canal filling material	
Fábio de Almeida-Gomes, Cláudio Maniglia-Ferreira, Marcelo de Moraes Vitoriano, Bruno Carvalho-Sousa, Nadine Luisa Soares de Lima Guimarães, Roberto Alves dos Santos, Eduardo Diogo Gurgel-Filho, Márcia Maria de Negreiros Pinto Rocha.....	98
Effectiveness of transcutaneous electrical nerve stimulation and microcurrent electrical nerve stimulation in bruxism associated with masticatory muscle pain - A comparative study	
Bharat Rajpurohit, Subhash M Khatri, Deepa Metgud, Anjana Bagewadi.....	104
The influence of torque and manual glide path on the defect or separation rate of NiTi rotary instruments in root canal therapy	
MH Zarrabi, M Javidi, M Vatanpour, H Esmaeili.....	107
Lenticular card: A new method for denture identification	
Shreya S Colvenkar.....	112
<i>Review Articles</i>	
Hand hygiene among health care workers	
Ameet Mani, AM Shubangi, Rajiv Saini.....	115
Obstructive sleep apnea and its management	
C Sunitha, S Aravind Kumar.....	119
<i>Case Report</i>	
Fixed rehabilitation of patient with aggressive periodontitis using zygoma implants	
Gunaseelan Rajan, Mirza Rustum Baig, John Nesan, Jayaram Subramanian.....	125
<i>Short Communications</i>	
Improving prosthetic prognosis by connective tissue ridge augmentation of alveolar ridge	
Niraj Mishra, Balendra P Singh, Jitendra Rao, Pavitra Rastogi.....	129
Transient diplopia in dental outpatient clinic: An uncommon iatrogenic event	
SM Balaji.....	132
Numb chin syndrome: A case report and review of the literature	
Jeevan Lata, Pramod Kumar.....	135
Oral manifestations leading to the diagnosis of familial tuberous sclerosis	
Hercilio Martelli Júnior, Leonardo Santos Lima, Paulo Rogério Ferretti Bonan, Ricardo D Coletta.....	138
An unusual communication between the mylohyoid and lingual nerves in man: Its significance in lingual nerve injury	
Bhagath Kumar Potu, Suhani Sumalatha D'Silva, P Thejodhar, Nishita C Jattanna.....	141
Oral abnormalities in the Ellis-van Creveld syndrome	
Prashant Babaji.....	143
<i>Letters to Editor</i>	
Tooth carving	
Arathi Rao.....	146
Has specialization isolated practitioners?	
A Gur, JP Majra.....	146
To do or not to do? Class II: Reflections of a conscientious dentist	
V Susila Anand.....	147
<i>Reviewers, 2009</i>	149
<i>Instructions for Authors</i>	152

Effects of radio-opacifier addition in dental impression material

Eduardo Gonçalves Mota, Angela Rigo, Maria Ivete Bolzan Rockenbach¹, Nilza Pereira da Costa¹

Departments of Clinical Dentistry, ¹Oral Surgery, Pontifical Catholic University of Rio Grande do Sul, Port Alegre, RS, Brazil

ABSTRACT

Objective: The aim of this *in vitro* study was to determine the effects of barium sulfate addition in two dental impression materials previously proved as radiolucent.

Materials and Methods: An irreversible hydrocolloid (IH) and polyether (PE) were tested for optical density, linear dimension stability and detail reproduction.

Statistical Analysis Used: The optical density data were submitted to Kolmogorov-Smirnov normality test and compared with two-way ANOVA and Tukey ($\alpha=0.05$).

Results: The results of optical density (pixel) were: IH control 45.24^f (± 7.6), PE control 54.93^e (± 4.45), PE 5Wt% 60.43^d (± 6.27), IH 1Wt% 61.54^{cd} (± 5.3), PE 1Wt% 66.9^{bc} (± 5.05), IH 5Wt% 67.17^b (± 6.01), PE 10Wt% 84.55^a (± 5.14), IH 10Wt% 85.33^a (± 5.53). On detail reproduction, polyether control was able to copy the 6 μm line. Adding 1 or 5Wt% of barium sulfate have not change this characteristic. For the irreversible hydrocolloid, the control group was able to copy a line with 14 μm , however, adding 1Wt% barium sulfate, the capability decreased to 22 μm . Adding barium sulfate in the polyether promoted an increase in between the copied lines, for the control, the average distance was 931.6 μm , 936 μm to 1Wt% and 954.5 μm to 5 Wt%. For the IH, the control presented 975 μm in comparison to 987.25 μm for 1 Wt% samples.

Conclusion: The addition of barium sulfate was capable of increasing significantly the optical density of tested material, have changed the linear dimension stability, however, have not interfered in detail reproduction only for PE.

Key words: Barium sulfate, impression materials, linear dimension stability and detail reproduction, optical density

Received : 30-10-08
Review completed : 06-04-09
Accepted : 20-10-09

DOI: 10.4103/0970-9290.62804

In most areas of dentistry, taking impression is a very important step that can determine the success of work. Nevertheless, this usual practice can cause some complications such as impression material retention in the gingival sulcus or aspiration.^[1,2] Reporting cases describes the effects of impression material retention in the subgingival area like irritation, inflammation, suppuration, periodontal abscess and pyogenic granuloma.^[3-5] The inhaled material can have several respiratory consequences, mainly recurrent pneumonia, which requires bronchoscopy or even surgical interventions.^[6,7] In these cases, to localize the materials is necessary radiographic exam and the high optical density is requirable to give a correct diagnosis.^[1,2]

The irreversible hydrocolloid and elastomers are the most clinically used impression material in the oral rehabilitation. In a previous research work,^[12] the authors concluded that polieter and irreversible hydrocolloid were the most radiolucent impression material, polysulfide and some polyvinyl siloxane showed the highest optical density or radio opacity.^[8-11,13]

Parissis *et al.* showed the possibility to change chemically radiolucent impression material to help in radiographic detection,^[11] however, no other *in vitro* study was carried on to verify the effect of this adding in such materials. Therefore, the aim of this *in vitro* study was to determinate the effects of adding barium sulfate in two dental impression materials, an irreversible hydrocolloid (IH, Jeltrate type II, Dentsply, Petrópolis, RJ, Brazil) and polyether (PE, Impregum Soft, 3M/ESPE, St. Paul, MN, USA), that were tested for optical density, linear dimension stability and detail reproduction.

MATERIALS AND METHODS

The material used in this study is showed in the Table 1.

Table 1: Description of materials used in the test

Material	Classification	Manufacturer	Batch number
Impregum soft	Polyether	3M/ESPE, St. Paul, MN, USA	215402
PE			
Jeltrate type II	Irreversible hydrocolloid	Dentsply, Petrópolis, RJ, Brazil	23589 484278
IH			
Barium sulfate 100%	Radiological contrast	Cristália, Itapira, SP, Brazil	05064876

Address for correspondence:
Dr. Eduardo Gonçalves Mota,
E-mail: ed_mota@terra.com.br

To define the optical density, eight groups [Table 2] were established according to the material (IH or PE) and the amount of barium sulfate (control, one, five or 10 Wt%). For each material, 10 samples (3 mm thickness and 6 mm diameter) were made using a PTFE mould. Two control groups and other six with addition of 1 Wt%, 5 Wt% and 10 Wt% barium sulfate were established. After the setting time, the sample was measured using a digital caliper (Mitutoyo, Suzano, SP, Brazil). The material was handled according to the manufacturer's specification.

The polyether was handled using a glass plate and spatula number 24 (SS White, Rio de Janeiro, RJ, Brasil) and poured into the mould using a specific syringe for elastomers. The irreversible hydrocolloid was manipulated in a flexible bowl with a flexible plastic spatula for one minute. The amount of barium sulfate was established with an analytical balance (AG 204, Mettler Toledo, Switzerland).

After the setting time, the sample was mounted on number two optical plates of digital system Digora (Soredex, Orion Corp., Helsinki, Finland). The standardization of digital images defined following specific criteria: X-ray device Timex-70 DRS (Gnatus, Ribeirão Preto, SP, Brazil), with 70 kVp and 7 mA; maintenance of focal distance in 40 cm, central beam focusing 90° with the center of optical plate; time exposure of 0.2 s. For comparative purposes, the optical density of one aluminum stepwedge with 3 mm thickness was verified under the same conditions of samples.

The images were digitalized with Digora System. To evaluate the optical density, two areas (20 × 20 pixels) were selected in opposite sides in each digital image, totaling 160 readings

To determine the linear dimension stability and detail reproduction, a metallic standardized model was used with lines of 40, 32, 27, 22, 14, 9, 6 e 3µm respectively. Only groups with significant differences on optical density were tested, i.e., IH control and 1Wt% and PE control, 1Wt% and 5 Wt% of barium sulfate.

The samples of IH control and IH 1 Wt% were copied with polyether because of the possibility of syneresis after the setting time. Each sample was reproduced with epoxy resin, gold sputter coated and submitted to an examination with scanning electron microscope (SEM). This test is a

Table 2: Groups description and relative proportions

Groups (%)	Materials (%)
IH control	Jeltrate type II
PE control	Impregum soft
IH 1 Wt	Jeltrate type II with 1 Wt of barium sulfate
IH 5 Wt	Jeltrate type II with 5 Wt of barium sulfate
IH 10 Wt	Jeltrate type II with 10 Wt of barium sulfate
PE 1 Wt	Impregum soft with 1 Wt of barium sulfate
PE 5 Wt	Impregum soft with 5 Wt of barium sulfate
PE 10 Wt	Impregum soft with 10 Wt of barium sulfate

modification of ADA number 18 specification. The detail reproduction was recorded in the narrowest continue line seen and the distance between the first (40 µm) and third (27 µm) lines to determine the linear dimension stability.

Statistical analysis

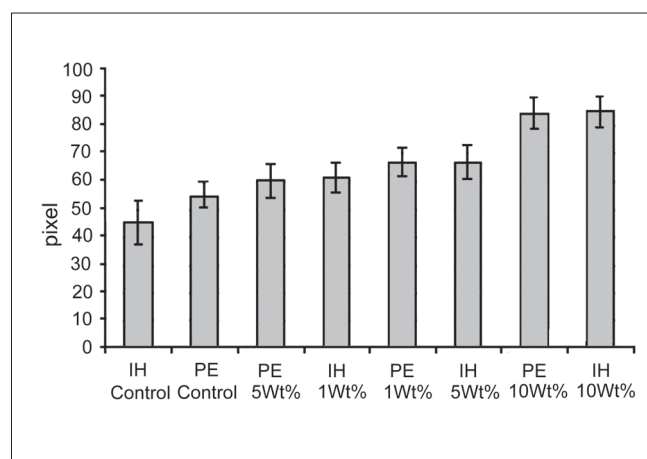
The optical density data were submitted to Kolmogorov-Smirnov normality test and compared with two-way ANOVA and Tukey ($\alpha = 0.05$).

RESULTS

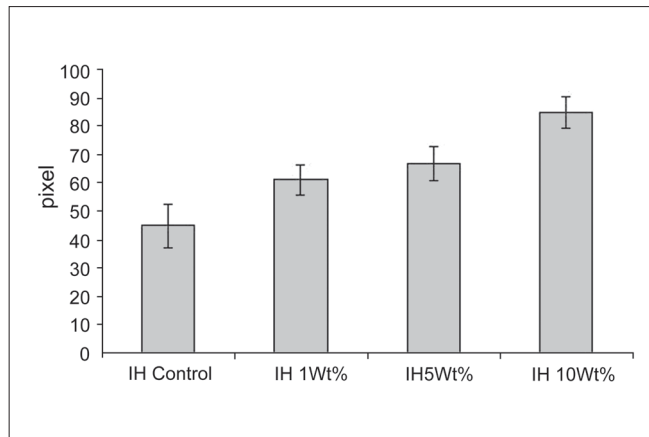
Significant differences ($P < 0.05$) were observed between the evaluated material and the amount of barium sulfate. The addition of barium sulfate was capable to increase significantly the optical density of tested materials ($P < 0.05$). The results of optical density (*pixel*) were: IH control 45.24^f (± 7.6), PE control 54.93^e (± 4.45), PE 5 Wt% 60.43^d (± 6.27), IH 1 Wt% 61.54^{cd} (± 5.3), PE 1 Wt% 66.9^{bc} (± 5.05), IH 5 Wt% 67.17^b (± 6.01), PE 10 Wt% 84.55^a (± 5.14), IH 10 Wt% 85.33^a (± 5.53) [Graph 1].

Significant differences were recorded for optical density ($P < 0.05$) when barium sulfate was inserted in irreversible hydrocolloid [Graph 2]. The increasing amount of radiopacifier induced a higher optical density of this material. To the polyether, significant differences were recorded to the optical density test. However, when 5 Wt% of barium sulfate was added, a significant decrease was recorded compared to 1 and 10 Wt% groups [Graph 3].

For detailed reproduction, polyether control was capable to copy the 6µm line. Adding one or five Wt% of barium sulfate was not able to change this behavior [Figure 1a-c]. For the irreversible hydrocolloid, the control group copied the line with 14 µm, however, adding one Wt% barium sulfate, the capability decreased to 22 µm [Figure 2a and b]. Adding barium sulfate in the polyether promoted an increase between the distance of copied lines [Figure 3a-c]. For the PE control, the average distance was



Graph 1: Comparison of optical density averages



Graph 2: Comparative optical density chart of irreversible hydrocolloid groups.

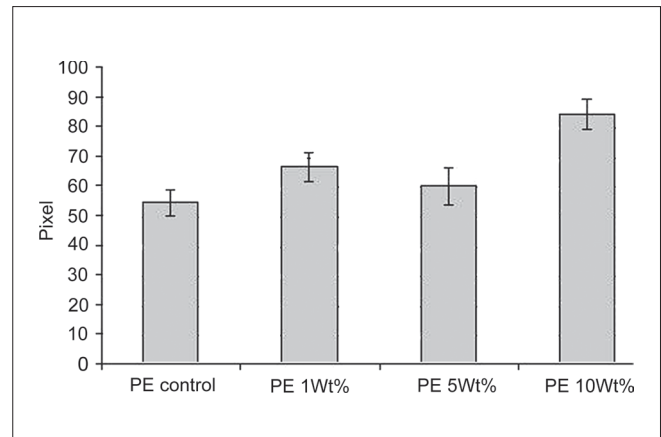
931.6 μm , 936 μm to 1 Wt% and 954.5 μm to 5 Wt%. For the IH, the control group presented 975 μm in comparison to 987.25 μm for 1 Wt% samples [Figure 4a and b].

DISCUSSION

On clinical use of impression material there is seven per cent possibility of intra-sulcular retention when the impression is taken.^[1] Several authors have evidenced the difficulty of radiological detection of impression materials.^[1,2,11-13] Clinical reports have described the effects of retention of impression materials in the subgingival region, such as: Irritation, inflammation, suppuration, periodontal abscess and pyogenic granuloma.^[2,13-15] Histological analysis of impression material toxicity showed the irreversible hydrocolloid as the most inflammatory potential, presenting acute abscess and total destruction of the tissue next to the epithelium. Inflammatory response to silicones and polyether was less intense than the irreversible hydrocolloid and polysulphides.^[2,17]

In this study, adding barium sulfate in impression materials was capable to increase significantly the optical density of tested materials ($P < 0.05$), in according to the results obtained on the literature.^[13] Only one difference, however, was observed in the group PE five Wt%, that presented statistically by less optical density than the PE one Wt%. This probably has happened due to hydrophilic behavior of this material since water was used as vehicle in barium sulfate contrast.

The low optical density recorded for control groups was already expected as observed in the results of other tests.^[2,3,11,16] Based on the optical density of 133.58 pixels for three mm thickness of the stepwedge used as reference, the values obtained to the control groups reached 33.87% to the irreversible hydrocolloid and 41.12% to the polyether. The higher amount of barium sulfate increased significantly



Graph 3: Comparative optical density chart of polyether groups

the optical density of the impression materials ($P < 0.05$). Both materials achieved 63% of optical density from stepwedge when adding 10 Wt% of barium sulfate.

However, other properties must be evaluated besides the radiographic characteristic, as well as mechanical behavior and clinical applications. The irreversible hydrocolloids are the most clinically used impression materials, nevertheless, it has low mechanical behavior, low tear energy, tensile strength and higher flow rate.^[6,18] These characteristics associated to the use of custom trays enlarge the risk of tearing and associated to the low optical density in small thickness may difficult the localization and result in intense inflammatory response.^[11,14] Thus, it requires more caution in the manipulation.

The polyether is considered as a rigid material and is difficult to be removed from retentive areas. This material shows higher tear energy than polydimethylsiloxane and polyvinylsiloxane silicones and lower than the polysulphides.^[8] As the polyether is less toxic than the polysulfide, if intrasulcular retention occurs, difficulty of localization might be expected.^[19] Moreover, this hydrophilic material is more suitable to flow into the gingival sulcus.

On linear dimensional stability and detail reproduction, only groups with significant differences on optical density were tested, i.e., IH control and one Wt% and PE control, one Wt% and five Wt% of barium sulfate. On detail reproduction, polyether control was able to copy the 6 μm line. Adding one or five Wt% of barium sulfate have not changed this characteristic. For ISO Standard 4823, the polyether must copy 20 μm . This value is superior to that recorded in the present study.^[20] The addition of barium sulfate in the polyether promoted an increase in distances between the copied lines. For control group, the average was 931.6 μm , 936 μm to one Wt% and 954.5 μm to five Wt%. This radio-opacifier also has not interfered on the detail

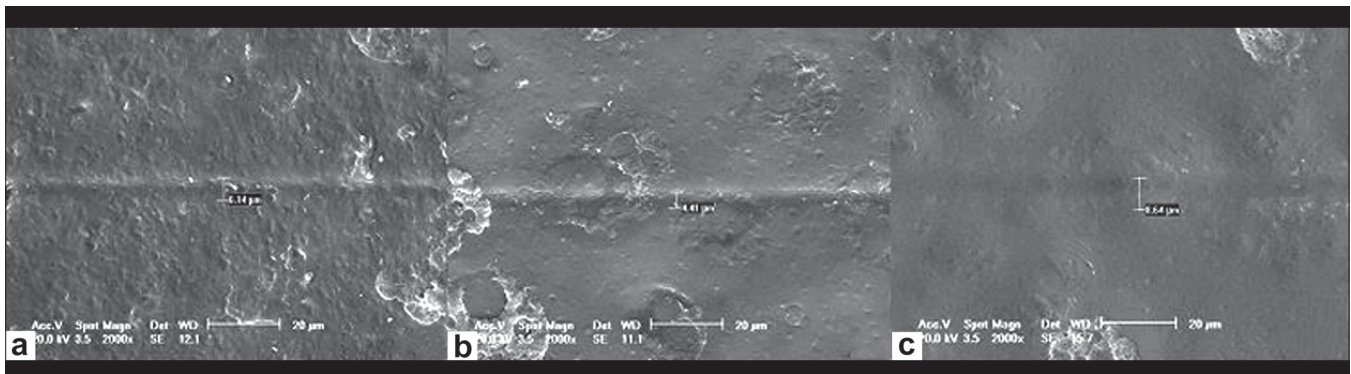


Figure 1: Comparison between detail reproduction of (a) polyether control, (b) 1 Wt% and (c) 5 Wt%

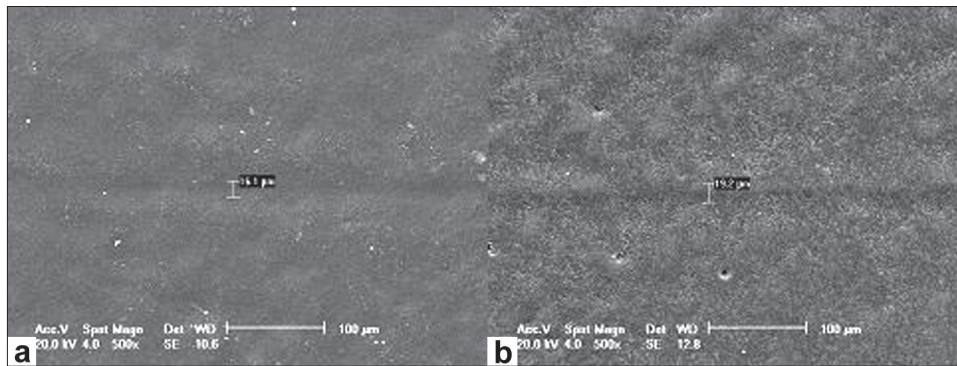


Figure 2: Comparison between detail reproduction of irreversible (a) hydrocolloid control and (b) 1 Wt%

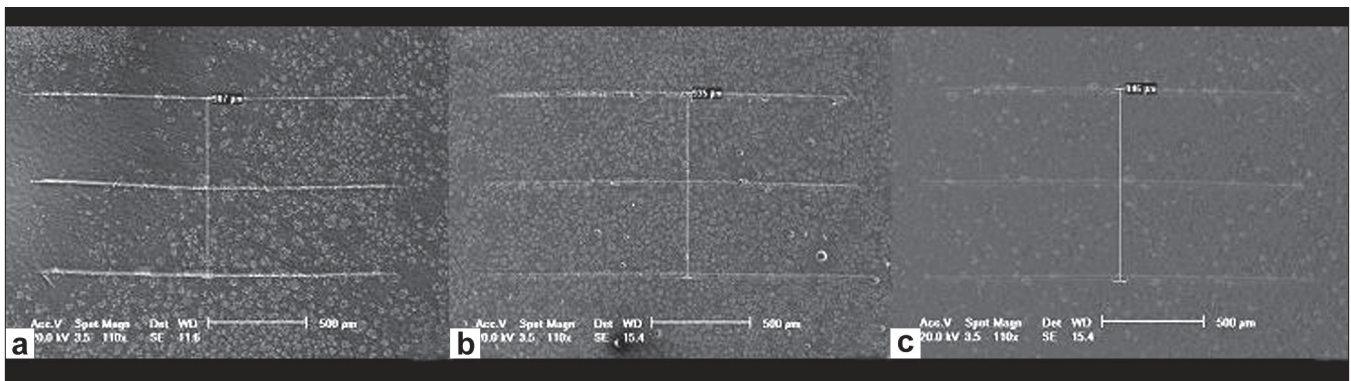


Figure 3: Comparison between dimensional stability of (a) polyether control, (b) 1 Wt% and (c) 5 Wt%

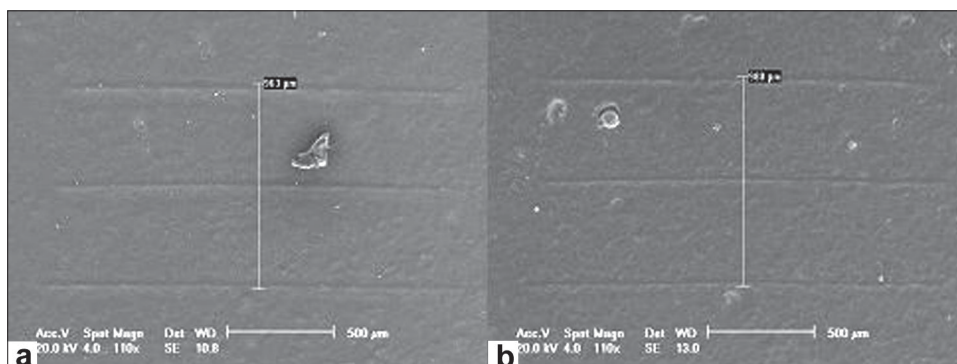


Figure 4: Comparison between dimensional stability of (a) irreversible hydrocolloid control and (b) 1 Wt%

reproduction of polyether, however, have altered the linear dimensional stability on 0.004% with addition 1Wt% and 0.023% to 5Wt%. For the irreversible hydrocolloid, the control group was able to copy a line with 14 μm thickness, however, adding one Wt% barium sulfate, the capability decreased to 22 μm . The irreversible hydrocolloid, according to ADA #18 specification, must reproduce a line of 0.075 mm (75 μm) thickness.^[21] The IH control group was able to reproduce the line of 14 μm when analyzed in SEM. Adding of 1 Wt% barium sulfate there was a decrease on the capability of detail reproduction, undergoing to a line of 22 μm . This thickness is still in accordance to the ADA requirement, with large safety margin. For the IH, the control groups presented 975 μm in comparison to 987.25 μm for 1Wt% samples. In irreversible hydrocolloid, the addition of barium sulfate decreases the capability of detail reproduction and has altered linear dimensional stability in 0.012%.

We suggest more research of mechanical behavior to evaluate the radio-opacifier addition on tensile strength and tear energy of impression. Additional data will provide subsidize to further clinical studies. These additional tests shall verify the viability of using more safe impression material.

CONCLUSION

The low optical density in the impression material tested in this study may be partially solved. Addition of barium sulfate was capable to increase significantly the optical density of material ($P < 0.05$), except for PE five Wt%. The linear dimension stability has changed in all tested groups. The radio-opacifier has changed the detail reproduction of irreversible hydrocolloid and have not interfered with the polyether groups, however, all groups respected the requirements of international specifications.

REFERENCES

1. Marshak BL, Cardash HS, Bem-Ur Z. Incidence of impression material found in the gingival sulcus after impression procedure for fixed partial dentures. *J Prosthet Dent* 1987;57:306-8.
2. Pinto A, Scaglione M, Pinto F, Guidi G, Pepe M, Del Prato B, *et al.* Tracheobronchial aspiration of foreign bodies: Current indications

3. for emergency plain chest radiography. *Radiol Med* 2006;111:497-6.
3. Siviers JE, Johnson GK. Adverse soft tissue response to impression procedures: Report of case. *J Am Dent Assoc* 1988;116:58-60.
4. Winstock D, Warnakulasuriya S. Impression material presenting in the maxillary antrum as a foreign body. *Br Dent J* 1986;160:54-5.
5. Kent WA, Shillingburg Jr HT, Tow HD. Impression material foreign body: Report of a case. *Quintessence Int* 1988;19:9-11.
6. Zitzmann NU, Elsasser S, Fried R, Marinello CP. Foreign body ingestion and aspiration. *Oral Surg Oral Med Oral Pathol Oral Radiol Endod* 1999;88:657-60.
7. Sopeña B, García-Caballero L, Diz P, De La Fuente J, Fernández A, Díaz JA. Unsuspected foreign body aspiration. *Quintessence Int* 2003;34:779-81.
8. Craig RG, Wataha JC, Powers JM. Impression Materials. In: Craig RG, Wataha JC, Powers JM, editors. *Dental materials: Properties and manipulation*. 8th ed. St. Louis: Mosby; 2004.
9. Eliasson ST, Haasken B. Radiopacity of impression materials. *Oral Surg Oral Med Oral Pathol* 1979;47:485-91.
10. Shillingburg HT Jr, Duncanson MG Jr, Kent WA. Radiopacity and color of elastomeric impression materials. *Quintessence Int* 1988;19:541-8.
11. Parisis N, Iakovidis D, Chirakis S, Tsirlis A. Radiopacity of elastomeric impression materials. *Aust Dent J* 1994;39:184-7.
12. Mota EG, Rockenbach MIB, Costa NP, Rigo A, Coelho CRR. Radiopacity of impression materials using an indirect digital system. *Rev Odontol Ciênc* 2008;23:333-7.
13. Shillingburg HT Jr, Wilkerson-Lyman SL, Duncanson MG Jr. Radiopacity enhancement of an experimental vinyl polysiloxane impression material. *Quintessence Int* 1989;20:657-63.
14. Gettleman L, Nathanson D, Shklar G, Brathwaite WJ Jr, Darmiento L, Levine P, *et al.* Preliminary evaluation of the histotoxicity and radiopacity of lead-containing elastic impression materials. *J Am Dent Assoc* 1978;96:987-93.
15. Spranley TJ, Gettleman L, Zimmerman KL. Acute tissue irritation of polysulfide rubber impression materials. *J Dent Res* 1983;62:548-51.
16. Price C. A method of determining the radiopacity of dental materials and foreign bodies. *Oral Surg Oral Med Oral Pathol* 1986;62:710-8.
17. Eliasson ST, Haasken B. Radiopacity of impression materials. *Oral Surg Oral Med Oral Pathol* 1979;47:485-91.
18. Ree MH. An unusual swelling following endodontic and prosthodontic treatment of a mandibular molar due to a foreign body reaction. *Int Endod J* 2001;34:562-7.
19. Lu H, Nguyen B, Powers JM. Mechanical properties of 3 hydrophilic addition silicone and polyether elastomeric impression materials. *J Prosthet Dent* 2004;92:151-4.
20. Anon. ISO Standard 4823:1992
21. Council adopts American Dental Association Specification no. 18 (alginate impression material). Council on Dental Materials and Devices. *J Am Dent Assoc* 1968;77:1354-8.

How to cite this article: Mota EG, Rigo A, Rockenbach MIB, da Costa NP. Effects of radio-opacifier addition in dental impression material. *Indian J Dent Res* 2010;21:63-7.

Source of Support: Nil, **Conflict of Interest:** None declared.