

Figura 10 - Vômeres. (A) *Scinax alter* (MCP1670); (B) *Sphaenorhynchus pauloalvini* (MNRJ 4323); (C) *Sphaenorhynchus prasinus* (EI59); (D) *Sphaenorhynchus dorisae* (ZUEC 11096). Escala de 1 mm.

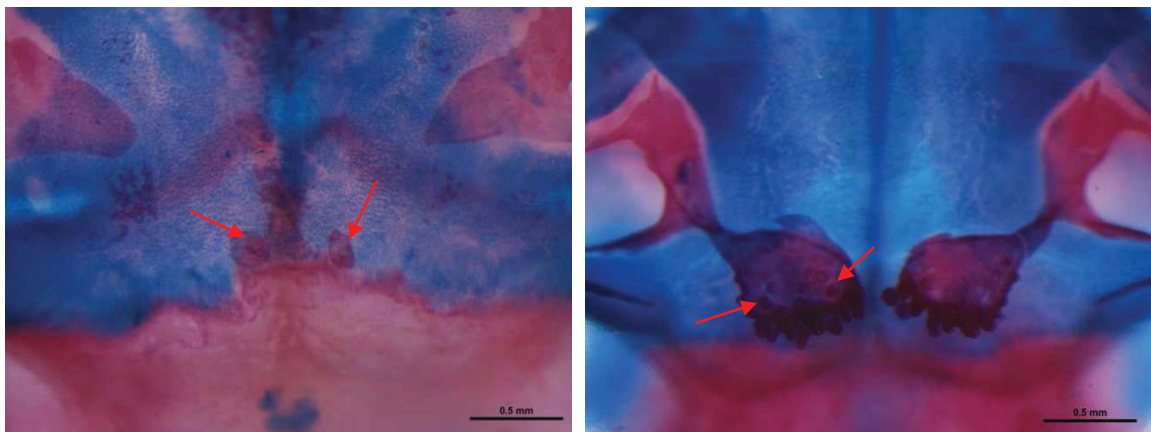


Figura 11 - Processo dentífero. (A) *Sphaenorhynchus dorisae* (ZUEC 11096); (B) *Sphaenorhynchus prasinus* (EI59). As setas indicam os dentes vomerianos.

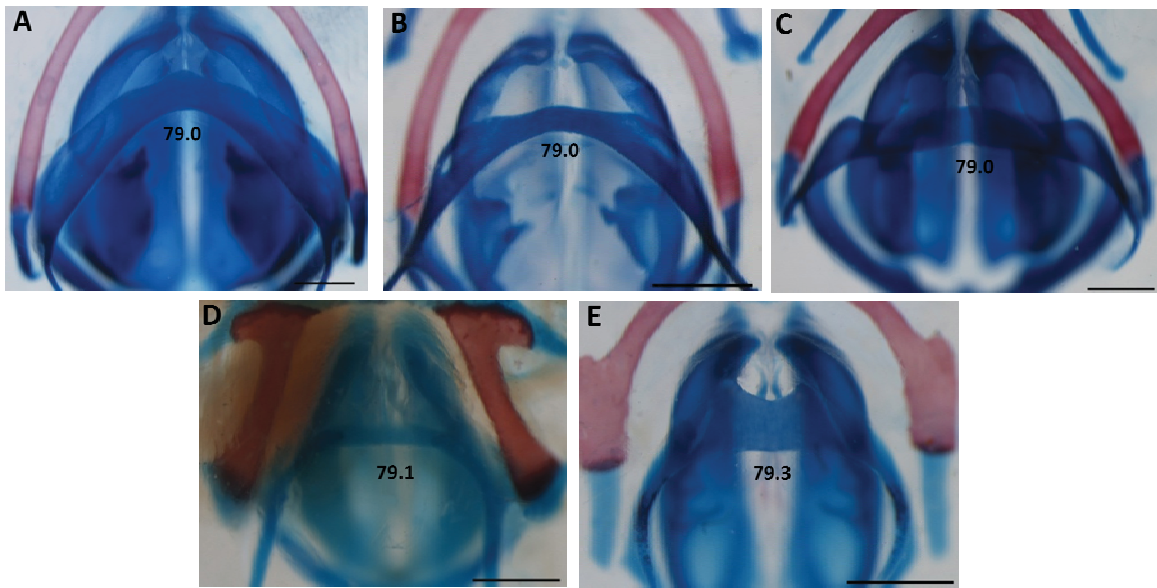


Figura 15 - Processo Cardíaco. Caráter 79. (A) *Sphaenorhynchus lacteus* (TG 2546); (B) *Sphaenorhynchus planicola* (MNRJ 54808); (C) *Sphaenorhynchus prasinus* (EI59); (D) *Pseudis minuta* (JF 1179); (E) *Scinax alter* (MCP 1670). Escala de 1 mm.

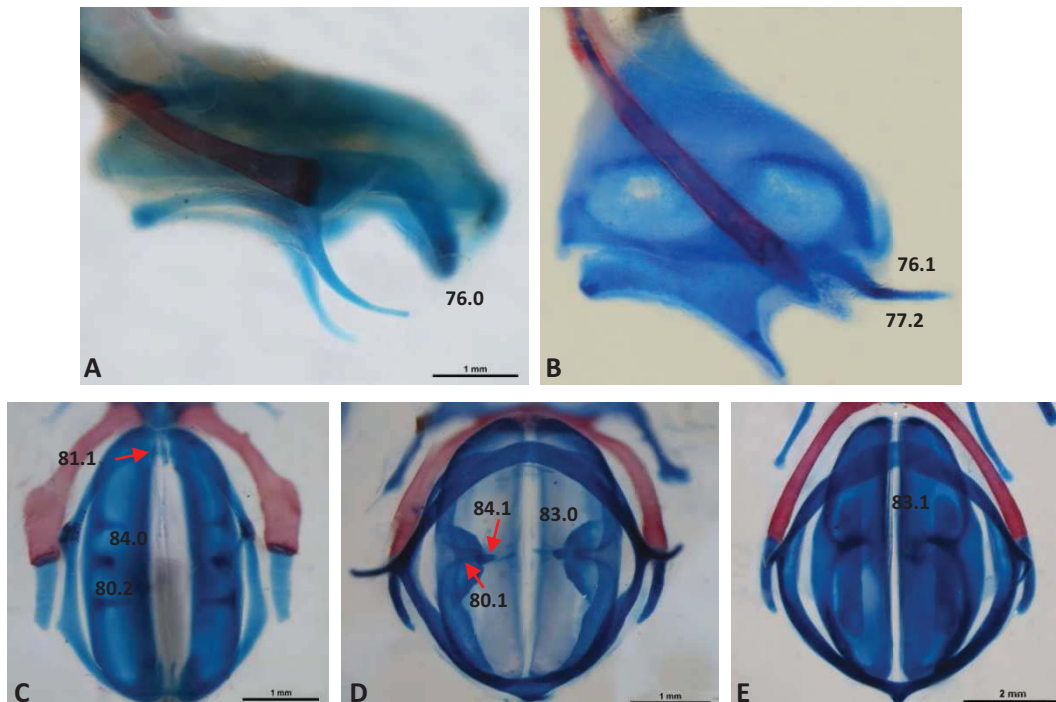


Figura 16 - Aparatus laringeal. Vista Lateral: (A) *Pseudis minuta* (JF 1179); (B) *Sphaenorhynchus pauloalvini* (CFBH 22928). Vista Ventral: (C) *Scinax alter* (MCP 1670); (D) *Sphaenorhynchus planicola* (MNRJ 54808); (E) *Sphaenorhynchus prasinus* (EI59). Foto (B) V. Dill

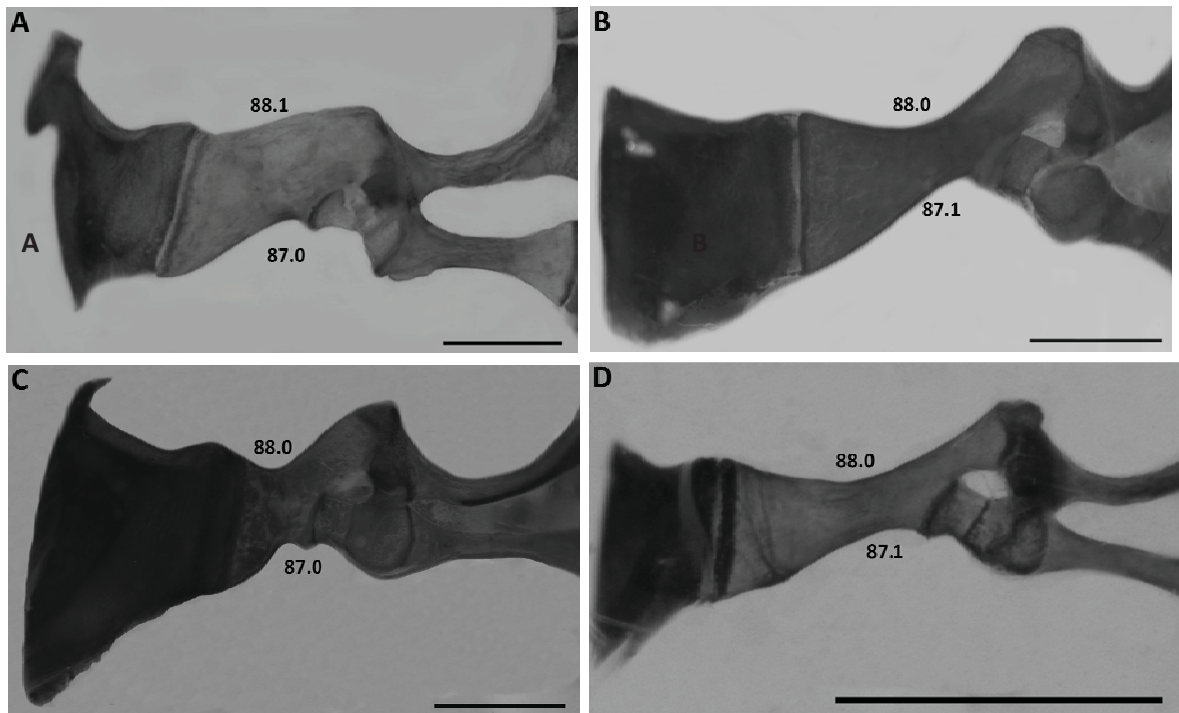


Figura 17 – Escápula. (A) *Pseudis minuta* (JF1179); (B) *Scinax catharinae* (MCP 3427); (C) *Sphaenorhynchus lacteus* (TG 2546); (E) *Sphaenorhynchus carneus* (ZUEC 5555). Escala de 2 mm.

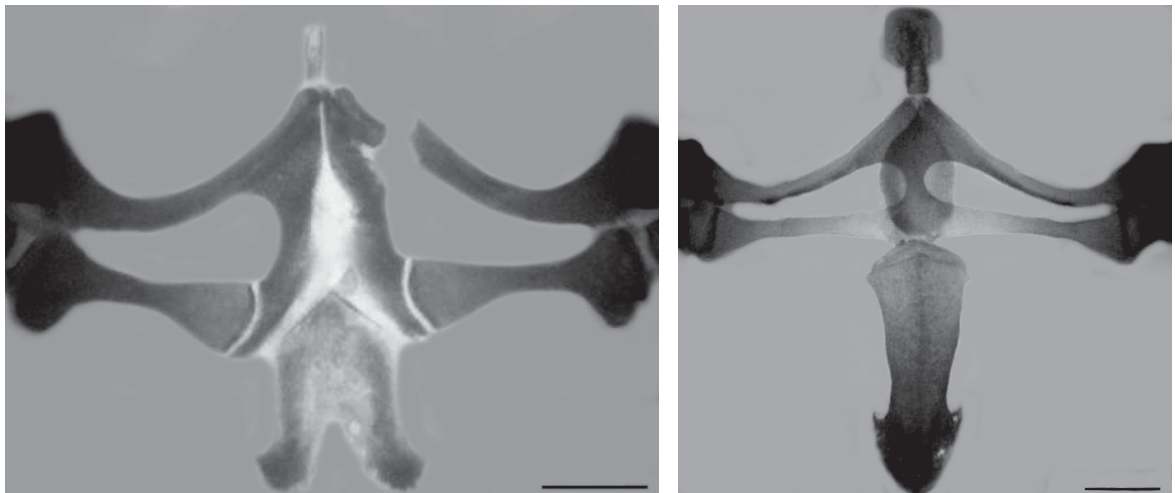


Figura 18 - Cintura peitoral. Caracteres 86 e 87. (A) *Xenohyla truncata* (MNRJ 33276; CRC 46,8 mm) (estados 86.0 e 87.0); (B) *Sphaenorhynchus lacteus* (TG 2524, CRC 40,53 mm) (estados 86.1 e 87.1). Escala de 0.2 cm.

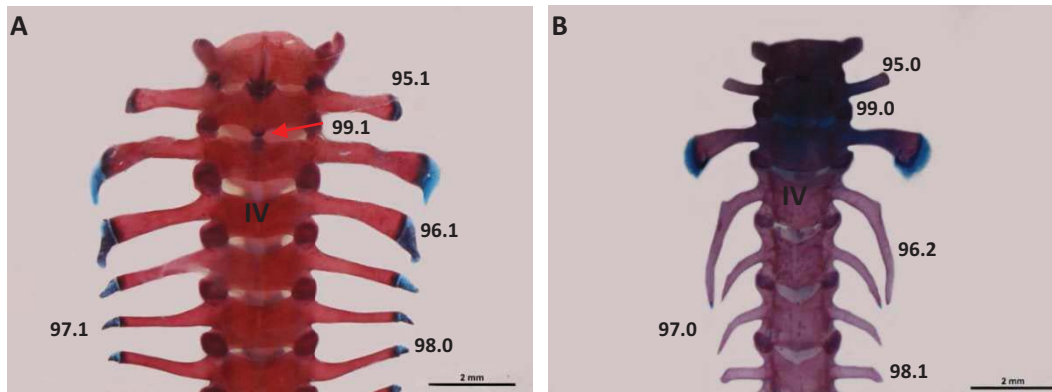


Figura 19 - Coluna Vertebral. (A) *Pseudis minuta* (JF 1179); (B) *Sphaenorhynchus surdus* (MCP 1302)

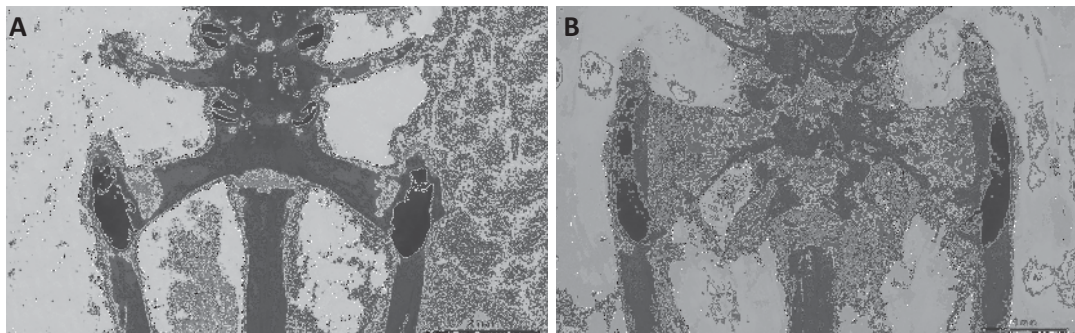


Figura 20 - Processo transverso da vértebra sacral. Caráter 100. (A) *Sphaenorhynchus prasinus* (EI 59) (estado 0); (B) *Sphaenorhynchus pauloalvini* (MNRJ4323) (estado 1)

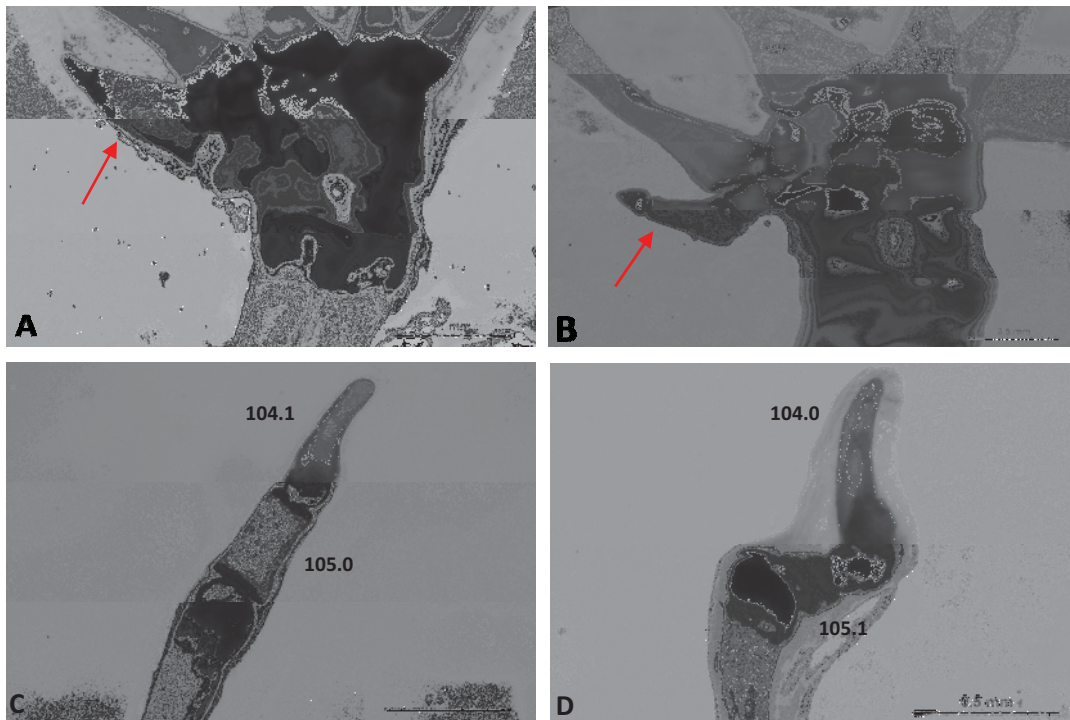


Figura 21 - Caráter 103: (A) *Sphaenorhynchus lacteus* (TG 2546) (estado 0); (B) *Scinax alter* (MCP 1670) (estado 1); (C) *Pseudis minuta* (JF 1179); (D) *Scarthyla goinorum* (TG 2742)

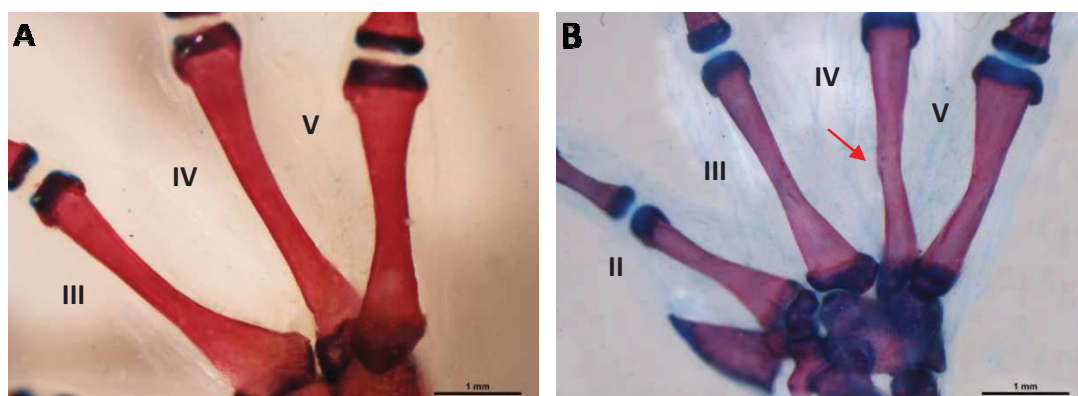


Figura 22 - Dilatação preaxial do metacarpal IV. Caráter 107. (A) *Scinax catharinae* (MCP 3427) (estado 0); *Sphaenorhynchus lacteus* (TG 2546) (estado 1)

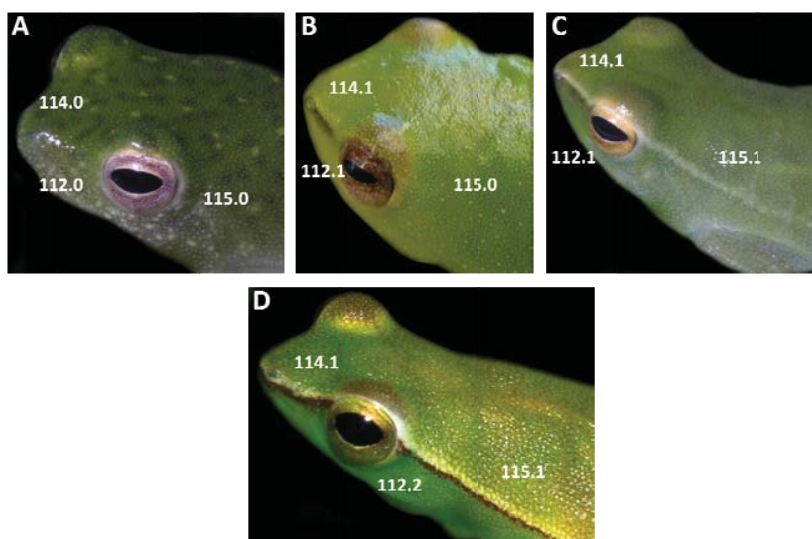


Figura 23 – Ornamentação lateral – Linhas Branca e Escura. (A) *Sphaenorhynchus dorisae* (TG 2836); (B) *Sphaenorhynchus prasinus*; (C) *Sphaenorhynchus lacteus* (TG 2526); (D) *Sphaenorhynchus palustris*. Fotos: (A e C) T. Grant; (B) M. Solé; (D) B. Pimenta.

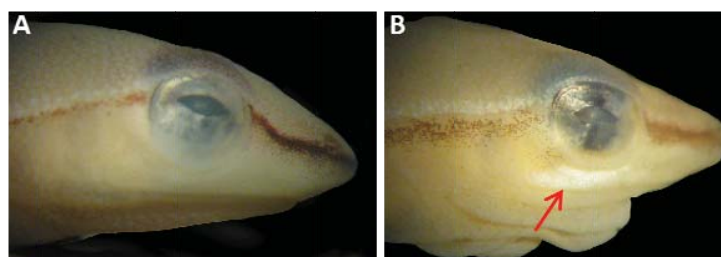


Figura 24 – Mancha Branca Longitudinal Subocular. Caráter 116. (A) *Sphaenorhynchus palustris* (MNRJ 42656) (estado 0); (B) *Sphaenorhynchus palustris* (MNRJ 54982) (estado 1).

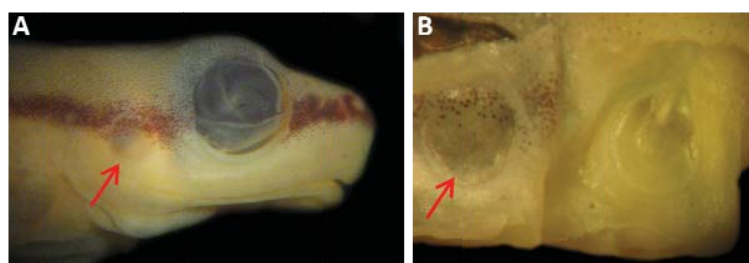


Figura 25 – Membrana Timpânica. Caráter 117. *Sphaenorhynchus pauloalvini* (MZUESC 6533). (estado 1). (A) Membrana timpânica vista externamente; (B) Membrana timpânica vista internamente. As setas indicam a membrana timpânica.

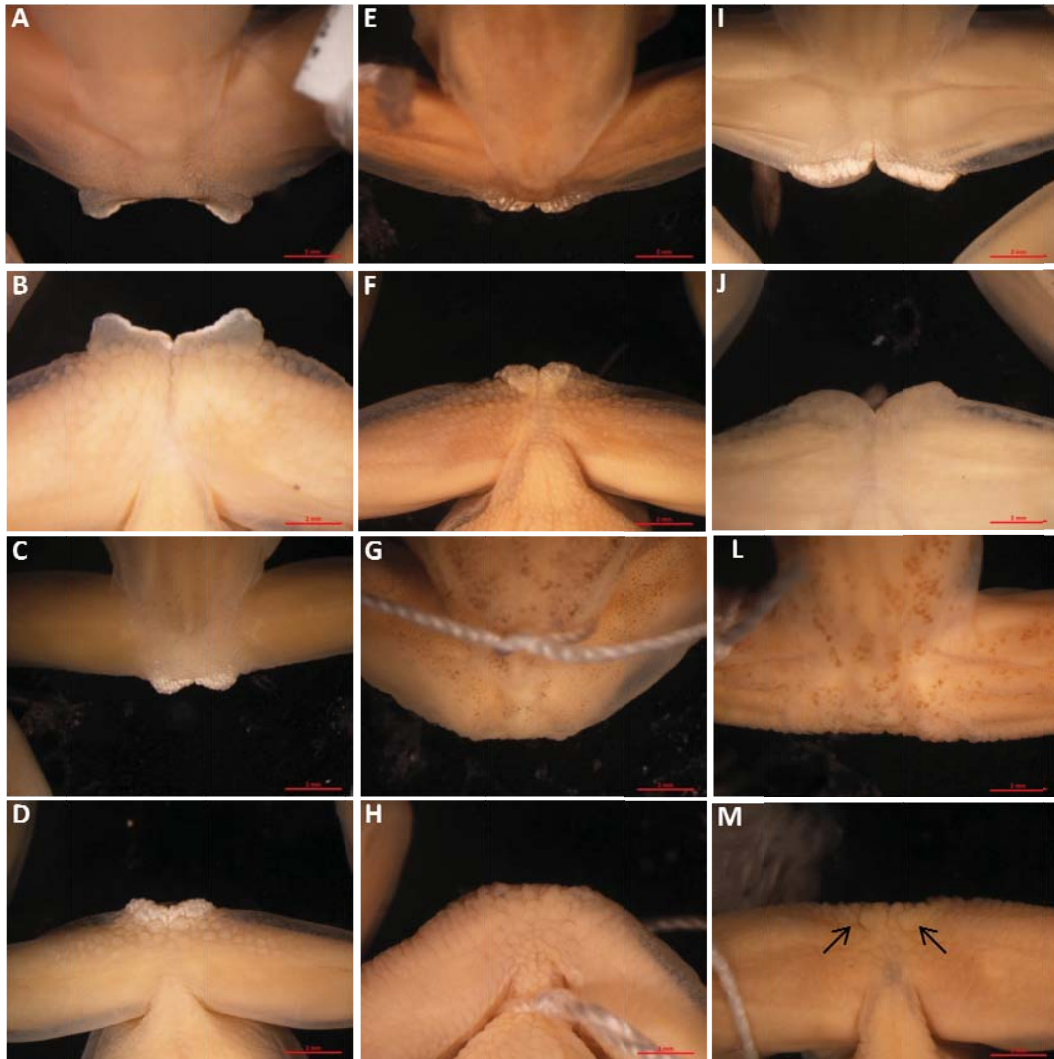


Figura 26 – Ornamentação cloacal. Caráter 120. (A e B) *Sphaenorhynchus dorisae*; (C e D) (estado 5); *Sphaenorhynchus prasinus* (estado 4); (E e F) *Sphaenorhynchus bromelicola* (estado 3); (G e H) *Sphaenorhynchus surdus* (estado 1); (I e J) *Sphaenorhynchus lacteus* (estado 4); (L e M) *Sphaenorhynchus orophilus* (estado 2).

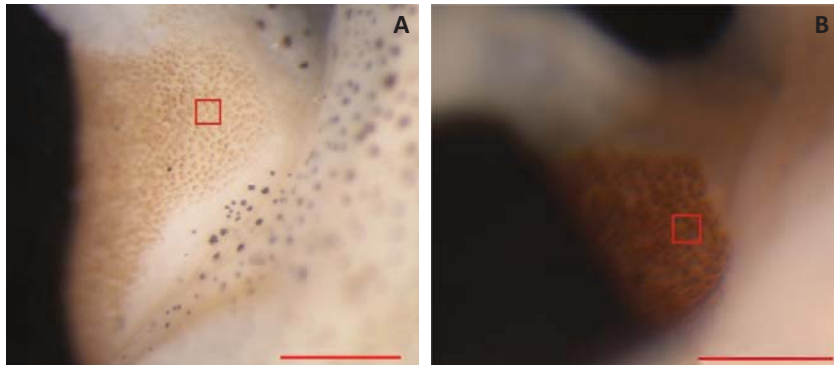


Figura 27 – Excrecência nupcial. Caráter 119. (A) *Sphaenorhynchus palustris* (MNRJ 54982) (estado 0); (B) *S. pauloalvini* (MNRJ4323). Escala de 0.5 mm. (estado 1); Quadrado de 0.01 mm².

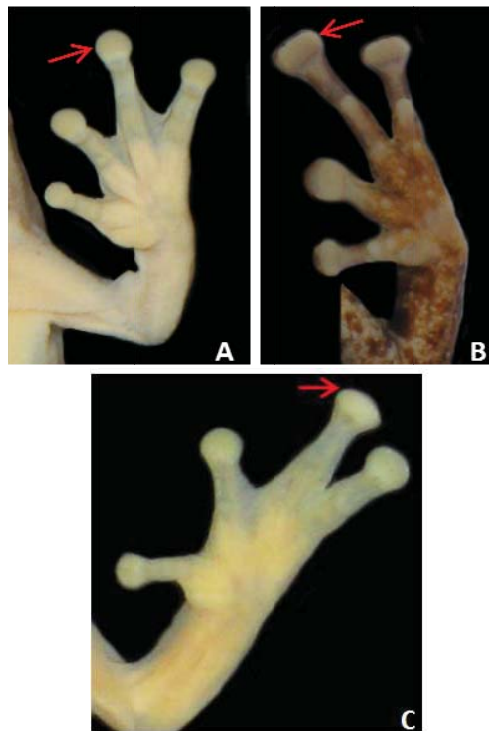


Figura 28 – Formato do disco adesivo da mão – Caráter 126. (A) *Sphaenorhynchus orophilus* (MNRJ 31731) (estado 0); (B) *Scinax catharinae* (MCP 3427) (estado 1); (C) *Sphaenorhynchus pauloalvini* (MNRJ 4323) (estado 2).