

APÊNDICE I: Figuras

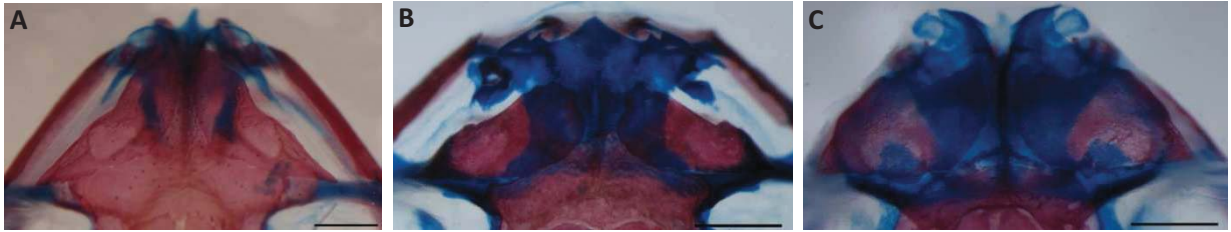


Figura 1. Formato dos Nasais. Caráter 2. (A) *Scinax alter* (MCP1670) (estado 0); (B) *Sphaenorhynchus pauloalvini* (MNRJ4323) (estado 1); *Sphaenorhynchus surdus* (MCP 1302) (estado 3). Escala de 1mm.

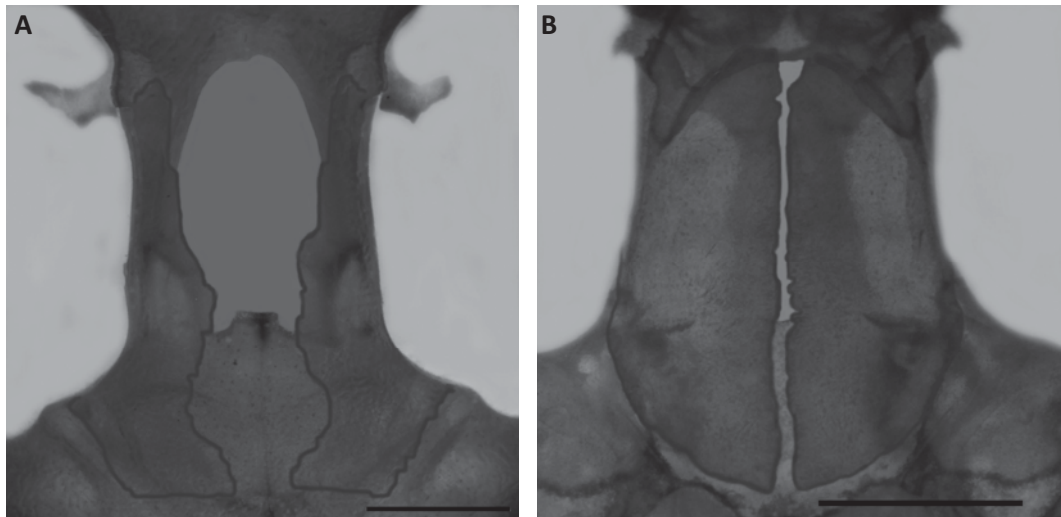


Figura 2 - Exposição da fontanela – Caráter 06. (A) *Scinax catharinae* (MCP 3427) (estado 0); (B) *Sphaenorhynchus palustris* (MNRJ59802) (estado 1). Escala de 2 mm.

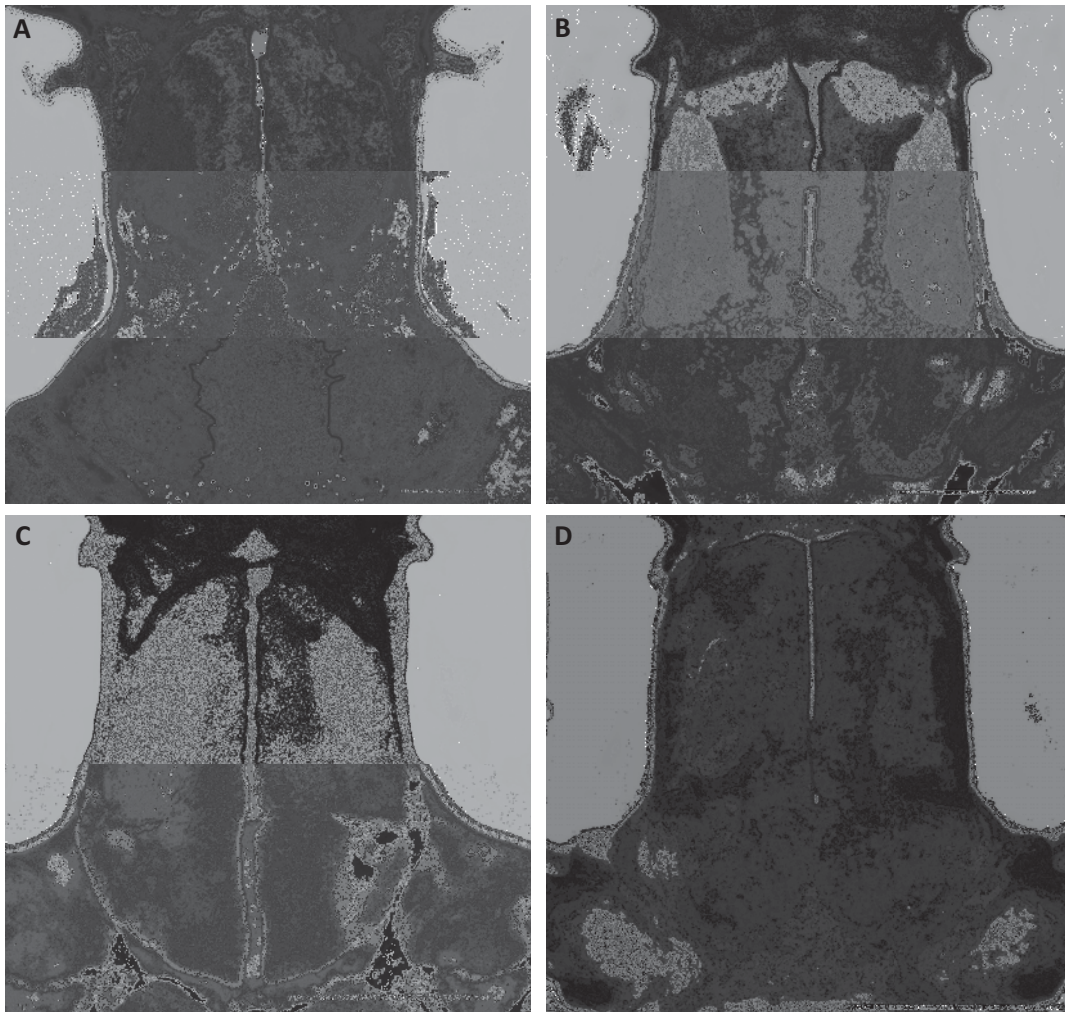


Figura 3 - Nível de contato dos frontoparietais posteriormente - Caráter 07. (A) *Scinax alter* (MCP1670, 1 mm) (estado 0); *Sphaenorhynchus planicola* (MNRJ54808, 1 mm) (estado 1); (C) *Sphaenorhynchus palustris* (MNRJ59802, 2 mm) (estado 3); (D) *Sphaenorhynchus pauloalvini* (MNRJ4323, 2 mm) (estado 4)

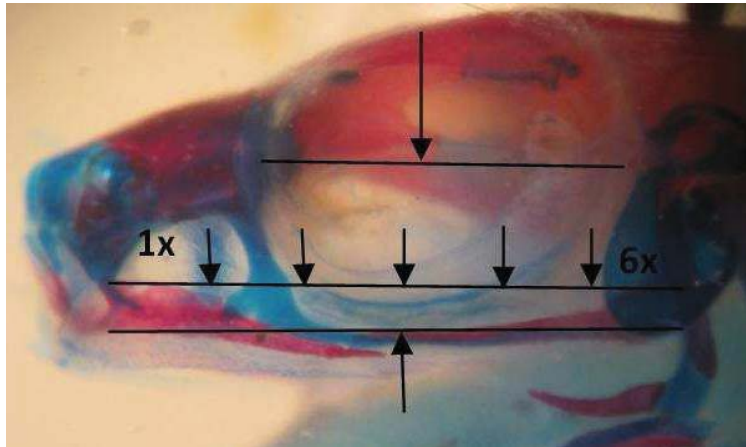


Figura 4 – Codificação do caráter **Extensão Posterior da Maxila**. Caráter 14. *Sphaenorhynchus dorisae* (ZUEC 11096) (estado 0).

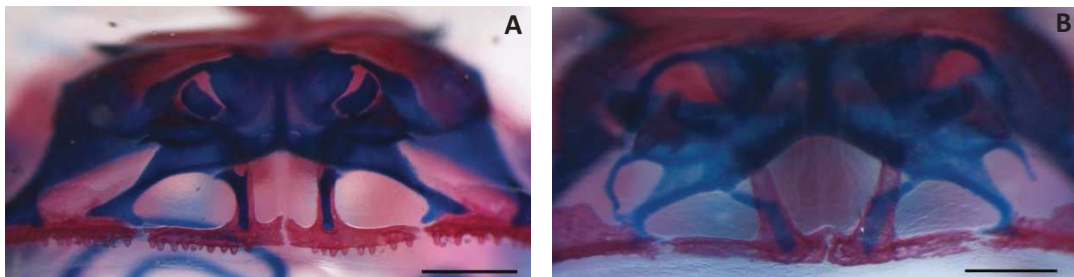


Figura 5 – Processo alar da premaxila. Caráter 21. (A) *Sphaenorhynchus caramaschii* (CFBH 6933) (estado 0); (B) *Sphaenorhynchus carneus* (ZUEC 5555) (estado 1). Escala de 0.5 mm

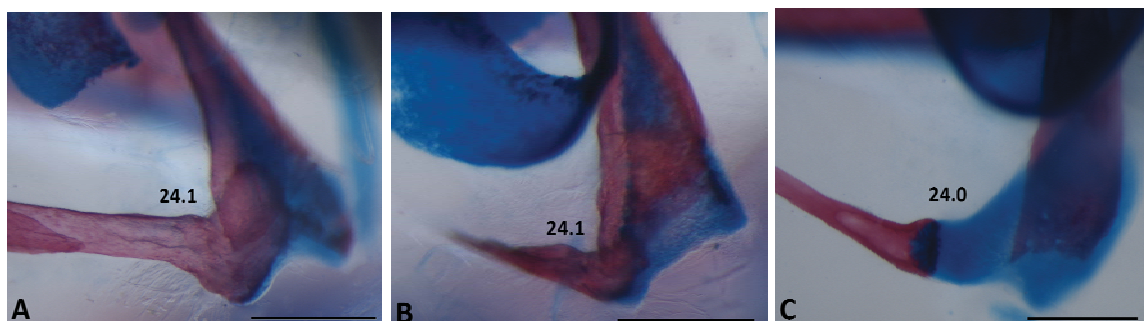


Figura 6 – Quadradojugal. Caráter 24. (A) *Scinax alter* (MCP 1670); (B) *Sphaenorhynchus pauloalvini* (MNRJ 4323); (C) *Sphaenorhynchus prasinus* (EI 59). Escala de 0.5 mm.

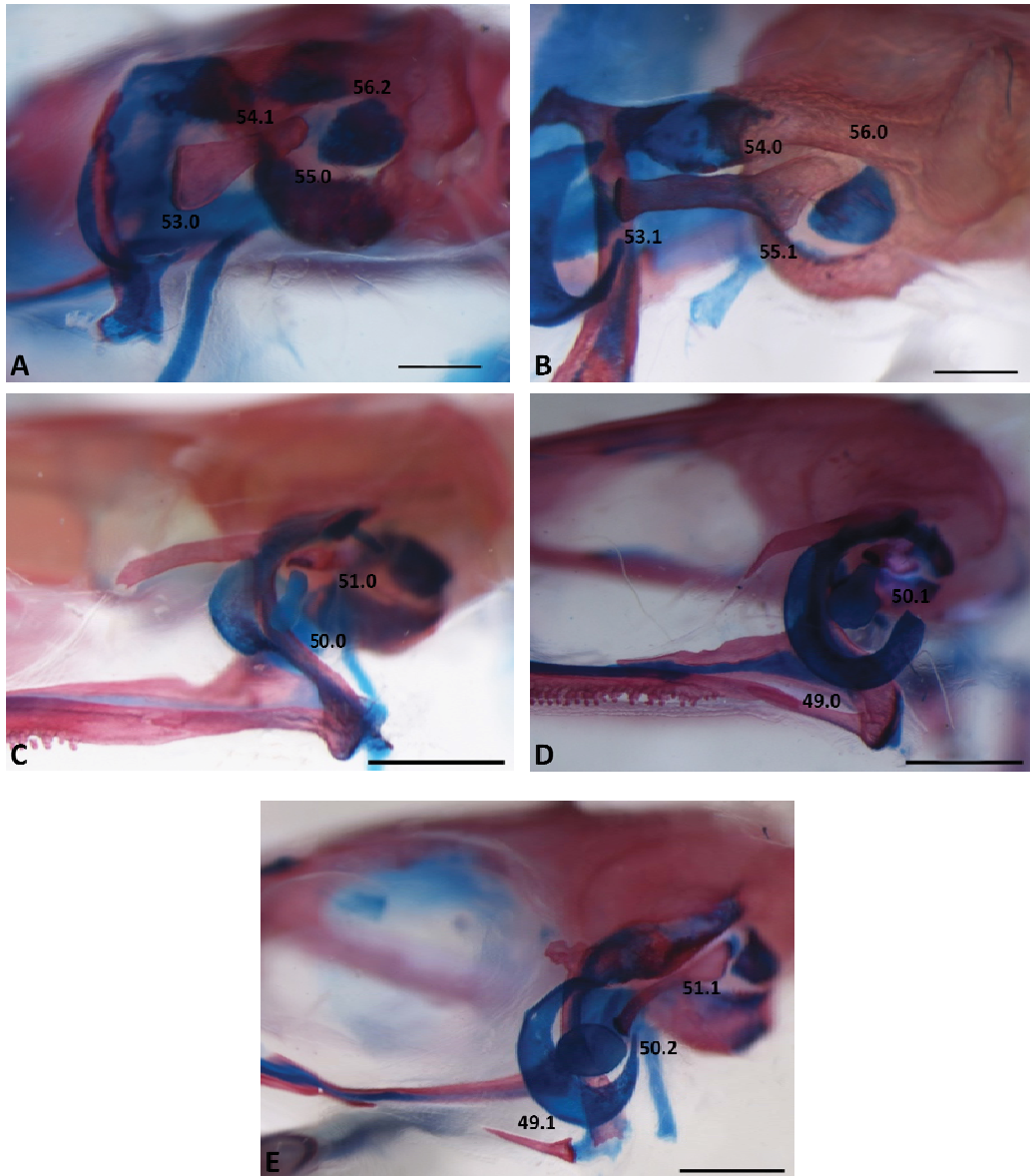


Figura 12 - Aparatus plectral. Vista posterolateral. (A) *Sphaenorhynchus carneus* (ZUEC 5555); (B) *Sphaenorhynchus pauloalvini* (MNRJ4323); Vista lateral (C) *Scinax alter* (MCP1670); (D) *Scarthyla goinorum* (TG2724); (E) *Sphaenorhynchus caramaschii* (CFBH 6937) (A e B = Escala de 0.5 mm; C, D e E = Escala de 1 mm)

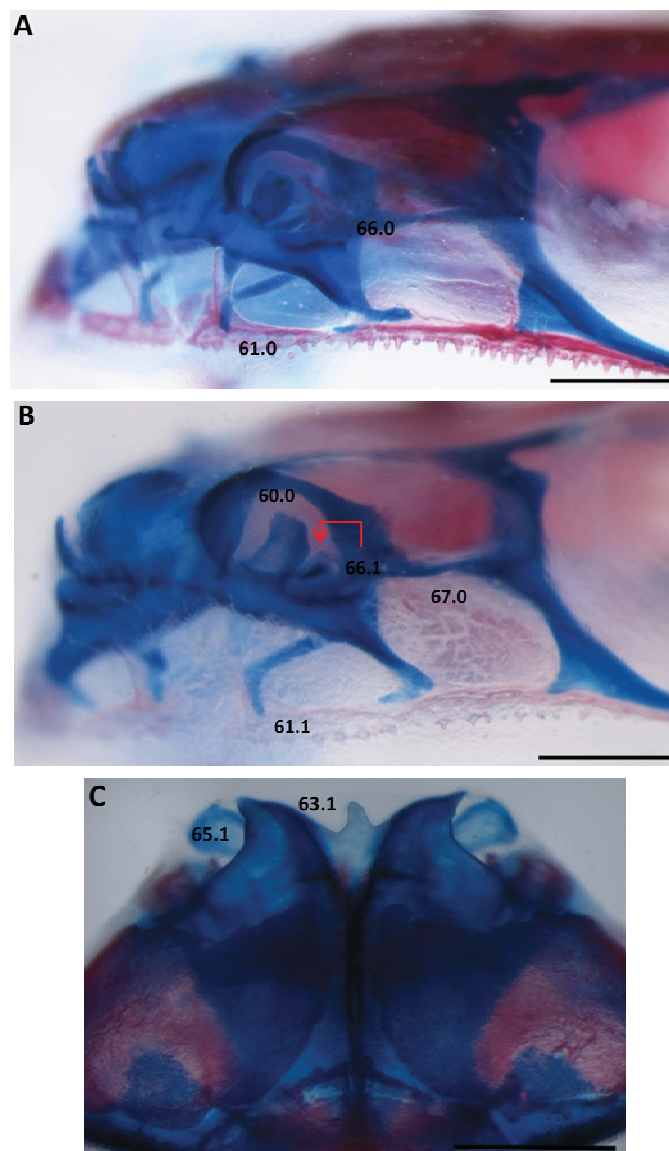


Figura 13 - Cartilagens nasais. Vista Anterolateral: (A) *Sphaenorhynchus prasinus* (MZUESC 6861) e (B) *Sphaenorhynchus surdus* (MCP 8324); vista dorsal (C) *Sphaenorhynchus surdus* (MCP 8324) Escala de 1 mm.