

original report

# Impact of Geographic Regions on Overall Survival in Patients With Metastatic Renal Cell Carcinoma: Results From an International Clinical Trials Database

**Purpose** Health determinants vary according to geographic region and may affect the outcomes of patients with metastatic renal cell carcinoma (mRCC) treated during clinical trials of targeted therapy. Here, we investigate the overall survival (OS) of patients with mRCC treated in the era of targeted therapy by geographic region.

**Methods** We conducted a pooled analysis of patients with mRCC who were treated during phase II or III clinical trials. Clinical characteristics and survival data were collected. Statistical analyses were performed with the Kaplan-Meier method and log-rank test in univariable analysis.

**Results** Overall, 4,736 patients were included in the analysis. Patient characteristics differed according to geographic region. No statistically significant differences in OS were observed when the United States/Canada (USC) was compared with the following other regions: Latin America, Asia/Oceania/Africa, and Eastern Europe. In a univariable analysis, OS differed among patients enrolled in trials in USC compared with Western Europe (20.3 v 17.4 months; hazard ratio, 1.15; 95% CI, 1.03 to 1.3;  $P = .015$ ), but it did not differ in a multivariable analysis. All-grade treatment-related adverse events (AEs) were observed more frequently in USC. There were no significant differences in grade 3 to 5 AEs among groups.

**Conclusion** Despite different baseline characteristics, OS was similar among patients enrolled in clinical trials across different geographic regions. Access to clinical trials as well as disease biology, AE reporting, and quality of care may contribute to potential differences in outcomes.

J Glob Oncol 4. © 2018 by American Society of Clinical Oncology Licensed under the Creative Commons Attribution 4.0 License

Andre P. Fay  
Rana R. McKay  
Xun Lin  
Ronit Simantov  
Toni K. Choueiri

Author affiliations and support information (if applicable) appear at the end of this article.

**Corresponding author:**

Toni K. Choueiri, MD, Department of Medical Oncology, Lank Center for Genitourinary Oncology, Dana-Farber Cancer Institute, 450 Brookline Ave, Dana 1230, Boston, MA 02215; e-mail: toni\_choueiri@dfci.harvard.edu.

## INTRODUCTION

Renal cell carcinoma (RCC) is a global health problem.<sup>1</sup> In 2012, there were more than 300,000 new RCC occurrences, which resulted in approximately 100,000 deaths worldwide.<sup>2</sup> In addition, the incidence of RCC is increasing worldwide.<sup>3</sup> Interestingly, mortality rates in developing countries are increasing, whereas mortality from RCC in developed countries has stabilized during recent years.<sup>3</sup>

Breakthroughs in cancer treatment have been achieved in the past few years, which has led to an overall improvement in clinical outcome for patients with metastatic disease. However, major advances in oncology have been restricted to specific populations within and across regions and countries, such as developed countries with increased health care resources.<sup>4,5</sup> The US

Department of Health and Human Services released comprehensive objectives to improve national health outcomes through improved policy and practice.<sup>6</sup> The 2020 objectives highlight the following message: “To eliminate health disparities and promote health equity, it would be necessary to address all important determinants of health disparities that can be influenced by institutional policies and practices.”<sup>6</sup> This message has applications globally. Importantly, health determinants—which include differences in personal, social, economic, and environmental factors that determine the health status of individuals or populations—vary according to the geographic regions and country wealth.<sup>7</sup> The International Agency for Research on Cancer, the specialized cancer agency of WHO, launched the World Cancer Report 2014, a collaboration of more than 250 leading scientists from more

than 40 countries, to describe multiple aspects of cancer research and control.<sup>8</sup> This report highlights the alarming growth rate of the cancer burden and emphasizes the need for implementation of effective strategies to curb this disease globally. Because of growing and aging populations, developing countries are disproportionately affected by the increasing numbers of cancer occurrences.

A better understanding of RCC pathogenesis has resulted in the development of targeted agents that have dramatically changed the natural history of patients with advanced disease.<sup>9,10</sup> Clinical trials in metastatic RCC (mRCC) to test different targeted agents have been conducted worldwide; have enrolled patients from different geographic regions, such as the United States, Canada, Europe, Latin America, Asia, and Africa; and have led to the approval of several agents that are now widely used as the standard of care in the metastatic setting.<sup>11,12</sup> However, the impact of geographic region, country income status, and country life expectancy on the clinical outcomes of patients with mRCC treated with targeted therapy has not been explored.

Health determinants vary according to geographic region and may impact the outcomes of patients with mRCC treated during clinical trials of targeted therapy. Increased knowledge about population diversities and health determinants provides a unique opportunity to improve barriers in cancer care across geographic regions and countries and to understand mechanisms of genomic diversity that may affect the clinical outcome of patients with mRCC.<sup>1</sup> Given the lack of data about efficacy and safety of targeted therapies in patients with mRCC according to the geographic region, we sought to investigate the impacts of the geographic region, country income, and country life expectancy on clinical outcomes of patients with mRCC who are treated in the era of targeted therapy.

## METHODS

### Study Design

We conducted a pooled retrospective analysis of patients with mRCC treated during phase II ([Clinicaltrials.gov](https://clinicaltrials.gov) identifiers: NCT00054886, NCT00077974, NCT00267748, NCT00338884, NCT00137423, and NCT00835978) and phase III ([Clinicaltrials.gov](https://clinicaltrials.gov) identifiers: NCT00083889,

NCT00065468, NCT00678392, NCT00474786, NCT00631371, and NCT00920816) clinical trials sponsored by Pfizer. The database included 4,736 patients with mRCC treated between 2003 and 2013.

Baseline demographic characteristics, clinico-pathologic features, and survival and toxicity data were collected across the following geographic regions: United States/Canada (USC), Western Europe (WE), Eastern Europe (EE), Latin America (LA), and Asia/Africa/Oceania (AAO). In addition, patients were categorized by country income status, which was defined as high, upper-middle, and lower-middle according to data from the World Bank,<sup>13</sup> and by country-specific adult life expectancy with data from a 2015 WHO report<sup>14</sup> (Appendix [Table A1](#)). For country-specific life expectancy, countries were dichotomized into two groups—high and low—on the basis of the median of the adult life expectancies of countries in our cohort.

### Study End Points

The primary end point of this study was to evaluate overall survival (OS) by the geographic region. OS was defined as the time from initiation of therapy to death as a result of any cause, censored at last follow-up. Secondary end points included evaluation of OS by country income status and country-specific adult life expectancy as well as assessments of progression-free survival (PFS), objective response rate (ORR), and safety by geographic region, country income status, and country-specific adult life expectancy. PFS was defined as the time from initiation of therapy to date of progression or death as a result of any cause or was censored at last follow-up. ORR was defined by RECIST version 1.1. Treatment-associated toxicities were evaluated with the Common Terminology Criteria for Adverse Events, version 3.0, and any-grade and grade 3 to 5 toxicities were described.

### Statistical Analyses

OS and PFS were estimated with the Kaplan-Meier method. Associations between OS and PFS were assessed by using the log-rank test in univariable analysis, and multivariable Cox regression analysis adjusted for significant variables in the univariable analysis. USC was used as a reference for comparisons of geographic

region. High income was used as a reference for country income comparisons. High country-specific life expectancy was used as the reference for life expectancy comparisons.

All statistical analyses were performed with SAS version 9.2 (SAS Institute, Cary, NC). A two-sided *P* value of < .05 was considered statistically significant.

## RESULTS

### Baseline Characteristics

Overall, 4,736 patients from different geographic regions were included in the analysis: USC (n = 1,544; 32.6% of total), AAO (n = 1,254; 26.47%), WE (n = 897; 18.94%), EE (n = 792; 16.72%), and LA (n = 250; 5.27%). Patient characteristics differed by geographic region; they are listed in Table 1. Briefly, patients in USC and WE were slightly older (mean ages, 60.6 and 60.5 years, respectively). An Eastern Cooperative Oncology Group (ECOG) performance status (PS) of 0 was more frequent in patients in LA. Body mass index (BMI) differed across regions (range of BMI > 25 kg/m<sup>2</sup>, 44% to 80%); higher BMI was observed more often in USC and LA. In addition, the number of patients who underwent a prior nephrectomy was higher in USC and WE. Baseline hypertension was more frequent in USC. There were more poor-risk patients in EE. In addition, statin and angiotensin system inhibitor (ASI) use was more frequent in USC (Table 1).

The numbers of patients enrolled in high-income, upper-middle-income, and lower-middle-income countries were 3,967 (83.76%), 502 (10.6%), and 267 (5.64%), respectively. For country-specific adult life expectancy, 3,218 (68%) patients were categorized into countries with lower than the median adult life expectancy.

### Survival Outcomes

The median OS times were 20.3 months in USC, 20.2 months in AAA, 19.7 months in EE, 19.4 months in LA, and 17.4 months in WE (Fig 1A). In a univariable analysis, no statistically significant differences in OS were observed when USC was compared with other regions, specifically with LA, AAO, and EE. However, OS differed significantly among patients enrolled in trials in WE compared with USC (17.4 v 20.3 months; hazard ratio [HR], 1.15; 95% CI, 1.03 to 1.3;

*P* = .015; Table 2). In the multivariable analysis, which included only significant variables from the univariable analysis, this difference was no longer statistically significant (HR, 1.12; 95% CI, 0.98 to 1.27; *P* = .08). In decreasing order, the median PFS times were 8.2 months in AAO, 7.6 in LA, 7.3 months in EE, 6.9 months in USC, and 5.9 months in WE (Fig 2A). However, there were no statistically significant differences in PFS by geographic region (Table 2).

Median OS times, when stratified by country income, were 19.9 months for high-income countries, 18.0 months for upper-middle-income countries, and 17.5 months for lower-middle-incomes. There were no statistically significant differences in OS (Fig 1B). Similar trends were observed for PFS when stratified by country income (Fig 2B).

Median OS times, when stratified by country-specific median adult life expectancy, were 20.3 months for higher life expectancy and 17.6 months for lower life expectancy (Fig 1C). Again, there were no statistically significant differences in OS. Similar trends were observed for PFS (Fig 2C).

### Response Rates

The ORR for the overall cohort was 24.5%. ORR was similar by geographic region (range, 17.3% to 28.8%), country income (range, 21.4% to 25.1%), and country-specific adult life expectancy (20.4% to 26.4%; Table 3).

### Treatment Exposure and Toxicities

Overall, 1,484 patients (31.3%) underwent a dose reduction or modification: 21.3% of patients in AAO; 28.9%, in EE; 24%, in LA; 41.1%, in USC; and 32.7%, in WE. Reasons for treatment discontinuation included toxicity (n = 675; 14.3%), disease progression (n = 2,017; 42.5% %), and other reasons (n = 2,044; 43.2%).

Overall, the most frequent any-grade treatment-related AEs were diarrhea (n = 2,079; 43.9%), fatigue (n = 2,018; 42.6%), nausea (n = 1,603; 33.8%), decreased appetite (n = 1,580; 33.4%), hypertension (n = 1,272; 26.8%), vomiting (n = 1,091; 23%), weight decrease (n = 1,058; 22.3%), rash (n = 1,046; 22%), pyrexia (n = 1,026; 21.6%), and palmar-plantar erythrodysesthesia syndrome (PPES; n = 1,022; 21.6%;

**Table 1.** Baseline Patient Characteristics

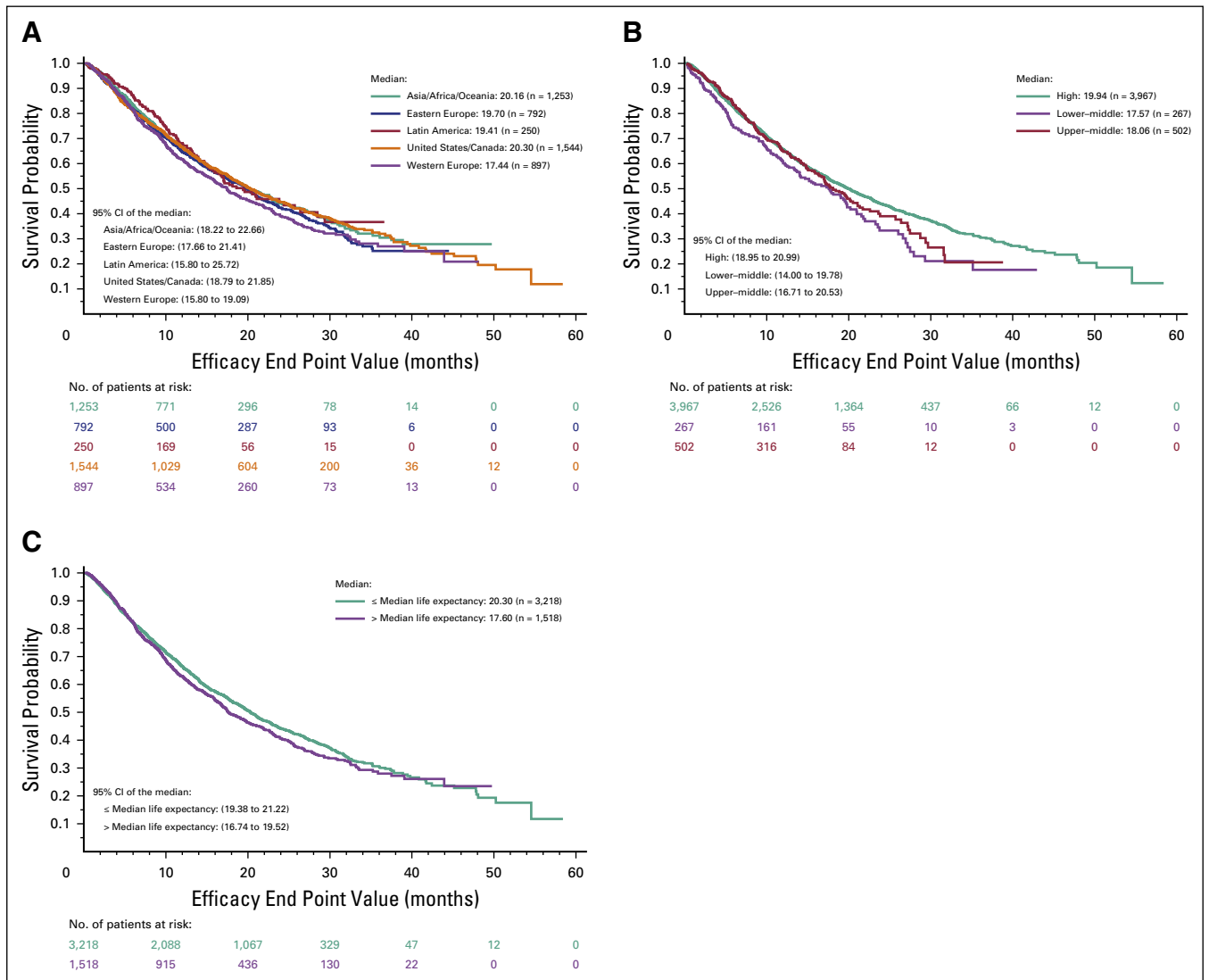
Characteristic	No (%) of Patients					
	United States/ Canada (n = 1,544)	Asia/Africa/Oceania (n = 1,254)	Western Europe (n = 897)	Eastern Europe (n = 792)	Latin America (n = 250)	Total (N= 4,736)
Mean age, years	60.5	57.8	60.6	58.8	57.4	59.2
ECOG PS						
0	841 (54.5)	653 (52.1)	476 (53)	358 (45.2)	167 (66.8)	2,495 (52.7)
1	655 (42.4)	594 (47.4)	408 (45.5)	420 (53)	81 (32.4)	2,158 (45.6)
Prior nephrectomy						
Yes	1,235 (80)	846 (67.5)	654 (72.9)	380 (48)	125 (50)	3,240 (68.4)
No	309 (20)	407 (32.5)	243 (27.1)	412 (52)	125 (50)	1,496 (31.6)
Obesity						
BMI ≥ 25 kg/m <sup>2</sup>	1,073 (80.1)	557 (44.4)	509 (56.7)	506 (63.9)	173 (69.2)	2,828 (59.7)
Baseline HTN						
Yes	871 (56.4)	405 (32.3)	407 (45.4)	334 (42.2)	106 (42.4)	2,123 (44.8)
No	673 (43.6)	848 (67.7)	490 (54.6)	458 (57.8)	144 (57.6)	2,613 (55.2)
IMDC risk group						
Low	294 (19)	138 (11)	172 (19.1)	100 (12.6)	20 (8.0)	724 (15.3)
Intermediate	683 (44.2)	531 (42.4)	403 (44.9)	295 (37.2)	99 (39.6)	2,011 (42.5)
Poor	389 (25.2)	247 (19.7)	215 (23.9)	252 (31.8)	42 (16.8)	1,145 (24.2)
Histology						
ccRCC	1,364 (88.3)	1,173 (93.6)	788 (87.5)	726 (91.6)	230 (92)	4,281 (90.4)
Non-ccRCC	127 (8.2)	53 (4.4)	99 (11)	54 (6.8)	19 (7.6)	352 (7.4)
Prior cytokine						
Yes	225 (14.6)	261 (20.8)	135 (15.1)	41 (5.2)	9 (3.6)	671 (14.2)
No	1,319 (85.4)	992 (79.1)	762 (84.9)	751 (94.8)	241 (96.4)	4,065 (85.8)
Bone metastasis						
Yes	361 (23.4)	345 (27.5)	289 (32.2)	253 (31.9)	53 (21.2)	1,301 (27.5)
No	1,069 (69.2)	896 (71.5)	608 (67.7)	522 (65.9)	192 (76.8)	3,287 (69.4)
Liver metastasis						
Yes	409 (26.4)	275 (21.9)	261 (29.1)	222 (28.0)	71 (28.4)	1,238 (26.1)
No	1,021 (66.1)	966 (77.1)	636 (70.9)	553 (69.8)	174 (69.6)	3,350 (70.7)
Statin use						
Yes	340 (22.0)	33 (2.6)	91 (10.1)	35 (4.4)	12 (4.8)	511 (10.8)
No	1,204 (78)	1,220 (97.4)	806 (89.9)	757 (95.6)	238 (95.2)	4,225 (89.2)
ASI use						
Yes	563 (36.5)	321 (25.6)	283 (31.5)	243 (30.7)	77 (30.8)	1,487 (31.4)
No	981 (63.5)	932 (74.4)	614 (68.5)	549 (69.3)	173 (69.2)	3,249 (68.6)

Abbreviations: ASI, angiotensin system inhibitor; BMI, body mass index; ccRCC, clear cell renal cell carcinoma; ECOG, Eastern Cooperative Oncology Group; HTN, hypertension; IMDC, International mRCC Database Consortium; nonccRCC, non-clear cell renal cell carcinoma; PS, performance status.

**Table 4).** Overall, any-grade treatment-related AEs were more prevalent in USC.

The incidence of treatment-related grade 3 to 5 toxicities was low in overall cohort (**Table 4**). Grade 3 to 5 hypertension was most frequent in AAO (12.2%), followed by USC (9.1%). Lower rates of grade 3 to 5 hypertension were observed in EE

(6.0%). Grade 3 to 5 diarrhea was observed in 8.4% of patients in LA, which was higher than the frequency observed in other regions. Also, grade 3 to 5 PPES was reported in 7.1% of patients in AAO, in 6.5% of patients in WE, and in 6.1% of patients in USC. Overall, there were no significant differences in grade 3 to 5 AEs according to geographic region (**Table 4**).



**Fig 1.** Kaplan-Meier plots of overall survival by (A) geographic region, (B) income, and (C) median life expectancy.

## DISCUSSION

Cancer care delivery varies significantly across the different global regions. Factors that influence cancer care delivery include system resources and allocation of resources across levels of care, quality of care, finances, and cultural barriers. These variables have the potential to affect survival outcomes for patients.<sup>15</sup> In this study, we evaluated the survival outcomes of patients with mRCC treated in different global geographic regions. To our knowledge, this is one of the largest analyses to evaluate the impact of geographic region, country income status, and life expectancy on clinical outcomes of patients with mRCC treated in the era of targeted therapy and as part of clinical trials. An understanding of the impact of health determinants in different populations may help eliminate health disparities and promote health equity in cancer treatment.<sup>16</sup>

Our analysis highlights the unique clinical and disease characteristics of patients enrolled in clinical trials in different geographic regions. In our analysis, patients in WE and USC were older than those in other regions. In addition, the majority of patients in LA had an ECOG PS of 0 and 32.4% had an ECOG PS of 1. In EE, AAO, WE, and USC, the rates of ECOG PS of 1 were 53%, 47.4%, 45.4%, and 42.2%, respectively. A potential explanation for the age differences across regions could be explained in part by heterogeneity in access to care across age groups. Also, cultural attitudes and preference for traditional versus modern therapies may explain the age differences observed in our cohort. There were some differences in International Metastatic mRCC Database Consortium prognostic score<sup>17</sup> distribution by region. More patients with

**Table 2.** Overall Survival According to Geographic Region and Baseline Characteristics

Variable	Univariable			Multivariable		
	HR	95% CI	P	HR	95% CI	P
Western Europe*	1.15	1.03 to 1.28	.015	1.12	0.98 to 1.27	.08
Eastern Europe*	1.07	0.95 to 1.20	.25	NA	NA	NA
Latin America*	0.97	0.80 to 1.17	.73	NA	NA	NA
Africa/Asia/Oceania*	1.00	0.90 to 1.11	.99	NA	NA	NA
Age < 65 v ≥ 65 years	1.03	0.95 to 1.13	.43	NA	NA	NA
Female v male sex	1.02	0.93 to 1.11	.70	NA	NA	NA
Black v white ethnicity	1.52	1.15 to 2.01	.003	1.08	0.79 to 1.46	.61
ECOG PS 0 v 1-2	0.41	0.38 to 0.44	< .001	0.62	0.56 to 0.67	< .001
BMI < 25 v ≥ 25 kg/m <sup>2</sup>	1.60	1.48 to 1.73	< .001	1.19	1.09 to 1.30	< .001
Non-clear cell v clear cell histology	1.33	1.17 to 1.53	< .001	1.41	1.22 to 1.63	< .001
Prior nephrectomy: no v yes	1.19	1.10 to 1.29	< .001	1.09	0.99 to 1.20	.057
No. of metastatic sites > 1	0.43	0.37 to 0.50	< .001	0.65	0.52 to 0.81	.001
Bone metastasis: no v yes	0.62	0.57 to 0.67	< .001	0.78	0.71 to 0.85	< .001
Liver metastasis: no v yes	0.63	0.57 to 0.68	< .001	0.76	0.69 to 0.83	< .001
Lung metastasis: no v yes	0.86	0.78 to 0.95	.003	0.78	0.70 to 0.87	< .001
Metastasis at other sites: no v yes	0.62	0.54 to 0.71	< .001	0.76	0.65 to 0.88	.0003
IMDC risk score						
Intermediate v low	2.45	2.10 to 2.85	< .001	1.40	1.07 to 1.84	.014
Poor v low	6.32	5.41 to 7.39	< .001	2.04	1.52 to 2.73	< .001
HTN: no v yes	1.23	1.14 to 1.33	< .001	1.07	0.97 to 1.19	.17
ASI use: no v yes	1.38	1.25 to 1.51	< .001	1.16	1.03 to 1.31	.01
Statin use: no v yes	1.24	1.09 to 1.41	.0011	1.11	0.96 to 1.29	.14
Prior cytokine: no v yes	1.16	1.02 to 1.31	.02	1.14	0.98 to 1.33	.09
Prior tyrosine kinase inhibitor: no v yes	0.83	0.73 to 0.96	.01	0.78	0.67 to 0.90	.001

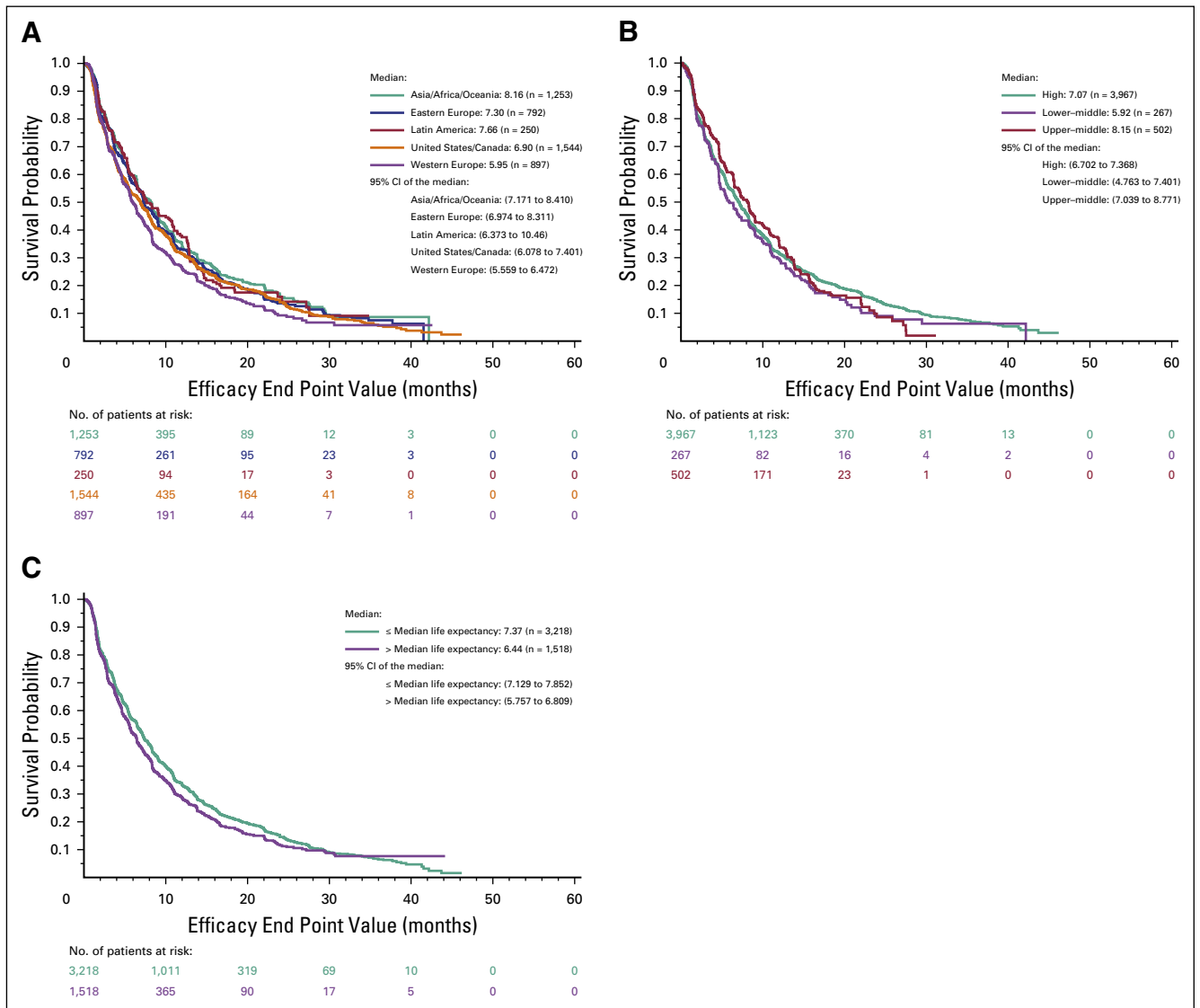
Abbreviations: ASI, angiotensin system inhibitor; BMI, body mass index; ccRCC, clear cell renal cell carcinoma; ECOG, Eastern Cooperative Oncology Group; HTN, hypertension; IMDC, International mRCC Database Consortium; NA, not applicable; non-ccRCC, nonclear cell renal cell carcinoma; PS, performance status.

\*Reference: United States/Canada.

unfavorable-risk disease were reported in EE, and more with favorable-risk disease were reported in USC and WE. Although variations in underlying disease biology may explain these differences, access to care also may be a contributing factor. Recognition of illness and of the potential benefits of treatment is a prerequisite for health care demand. In areas where a larger proportion of the population is in poor health, illness may not be as easily recognized; therefore, patients may present with more overwhelming disease. In addition, increased use of radiographic imaging modalities in developed countries may allow detection of disease at earlier stages. Prior nephrectomies were performed more frequently in USC (in 79.9% of patients). Similar patterns of surgical treatment of primary tumors were observed in WE (72.9% of patients). Interestingly, only 47.9% of patients in EE and

50% in LA had nephrectomy before enrollment in clinical trials. These findings highlight the varied access to surgical treatment may across different regions. Our analysis also revealed different patterns in terms of cytokine use. Prior use of cytokines was frequent in AAO (20.8%), but use was limited in LA and EE. Prior cytokine use was reported in 14.5% of patients in USC and in 15.5% in WE. This difference may reflect differences in access to health care and targeted therapies. Interestingly, similarities in rates of liver or bone metastasis were observed in different regions, which suggests similar aspects of disease biology and pathogenesis.

Moreover, many cancer types are considered metabolic diseases. However, the contribution of metabolic dysfunction to the onset of cancer development remains poorly understood.<sup>18</sup> Obe-



**Fig 2.** Kaplan-Meier plots of progression-free survival by (A) geographic region, (B) income, and (C) median life expectancy.

Obesity is a well-established risk factor for kidney cancer<sup>19</sup> and may affect the clinical outcome of patients with advanced disease.<sup>20</sup> It is predicted that 50% of men and 60% of women in Latin America will be obese by 2030.<sup>21</sup> Conversely, approximately, 26% of adults are obese in a high-income country like the United States, and

approximately 40% are not physically active. In Brazil, a middle-income country, 17% of adults are obese, and a lower number of people are not physically active (14.9%). In our cohort, a BMI of 25 kg/m<sup>2</sup> or greater was observed in 70.1% of patients in USC and in 69.2% of patients in LA. Interestingly, obesity was less frequent in

**Table 3.** Objective Response Rates According to Geographic Region

Response	No. (%) of Patients					
	AAO (n = 1,253)	EE (n = 792)	LA (n = 250)	USC (n = 1,544)	WE (n = 897)	Total (N = 4,736)
Complete response	5 (0.4)	5 (0.6)	0	13 (0.8)	10 (1.1)	33 (0.7)
Partial response	323 (25.8)	207 (26.1)	72 (28.8)	380 (24.6)	145 (16.1)	1,127 (23.8)
Stable disease	672 (53.6)	407 (51.4)	127 (50.8)	713 (46.2)	484 (53.9)	2,403 (50.7)
Progressive disease	163 (13)	116 (14.6)	32 (12.8)	287 (18.6)	174 (19.4)	772 (16.3)
Objective response	328 (26.1)	212 (26.7)	72 (28.8)	393 (25.4)	155 (17.3)	1,160 (24.5)

Abbreviations: AAO, Asia/Africa/Oceania; AE, adverse event; EE, Eastern Europe; LA, Latin America; USC, United States/Canada; WE, Western Europe.

**Table 4.** AEs in More Than 20% of Patients According to Geographic Region

AE	No. (%) of Patients					
	AAO	EE	LA	USC	WE	Total
Any grade						
Diarrhea	461 (36.8)	205 (25.7)	112 (44.8)	862 (55.8)	440 (49)	2,079 (43.9)
Fatigue	340 (27.1)	234 (29.5)	76 (30.4)	1124 (72.8)	244 (27.2)	2,018 (42.6)
Nausea	221 (17.6)	124 (15.6)	77 (30.8)	856 (56)	316 (35.2)	1,603 (33.8)
Decreased appetite	303 (24.2)	203 (25.6)	79 (31.6)	675 (43.7)	320 (35.7)	1,580 (33.4)
Hypertension	425 (33.9)	191 (24.1)	79 (31.6)	380 (24.6)	197 (21.9)	1,272 (26.8)
Vomiting	172 (13.7)	90 (11.3)	68 (27.2)	533 (34.5)	228 (25.4)	1,091 (23)
Decreased weight	239 (19)	223 (28.1)	68 (27.2)	339 (21.9)	189 (21.1)	1,058 (22.3)
Rash	257 (20.5)	113 (14.2)	31 (12.4)	448 (29)	197 (21.9)	1,046 (22.1)
Pyrexia	216 (17.2)	199 (25.1)	53 (21.2)	350 (22.7)	208 (23.1)	1,026 (21.7)
Palmar-plantar erythrodysesthesia syndrome	367 (29.3)	53 (6.7)	40 (16)	321 (20.8)	241 (26.9)	1,022 (21.6)
Asthenia	152 (12.1)	187 (23.6)	76 (30.4)	163 (10.5)	392 (43.7)	970 (20.5)
Grades 3-5						
Fatigue	58 (4.6)	68 (8.5)	20 (8)	262 (16.9)	56 (6.2)	464 (9.8)
Hypertension	154 (12.2)	48 (6.0)	20 (8)	141 (9.1)	57 (6.3)	420 (8.8)
Anemia	69 (5.5)	120 (15.1)	22 (8.8)	95 (6.1)	57 (6.3)	363 (7.7)
Asthenia	40 (3.1)	64 (8.0)	19 (7.6)	50 (3.2)	98 (10.9)	271 (5.7)
Palmar-plantar erythrodysesthesia syndrome	89 (7.1)	14 (1.7)	10 (4)	95 (6.1)	59 (6.5)	267 (5.6)
Diarrhea	44 (3.5)	38 (4.7)	21 (8.4)	95 (6.1)	58 (6.4)	256 (5.4)

Abbreviations: AAO, Asia/Africa/Oceania; AE, adverse event; EE, Eastern Europe; LA, Latin America; USC, United States/Canada; WE, Western Europe.

EE, WE, and AAO (63.8%, 56.7%, and 44.4%, respectively). Societies that experience transitions in nutrition are at the greatest risk of dealing with the burden of simultaneous over- and under-nutrition and cancers associated with each domain. In addition, recent publications have suggested an association of statin and ASI use with improved survival in patients with mRCC treated with targeted therapy.<sup>22</sup> In our cohort, ASI and statin use differed across different regions and was more prevalent in USC. This may be related to the older more obese patient population, with more comorbidities, in USC. It also may reflect increased access to and increased thresholds for pharmacologically treated hypertension and dyslipidemia.

Recently, Goss et al<sup>15</sup> highlighted the growing cancer threat in LA and suggested that, with rapidly increasing incidence and mortality rates for cancer, the degree of human suffering and economic burden of cancer will have a negative impact on the clinical outcome of patients with cancer.<sup>15</sup> Similarly, China, India, and Russia also share a rapidly increasing cancer incidence and

mortality that are nearly twice as high as those in Europe or the United States.<sup>23</sup> The CONCORD-2 study, designed to perform a long-term worldwide surveillance of cancer, has shown important disparities in cancer mortality in different countries. In this registry, survival rates were observed across 67 countries. As an example, the 5-year survival range for patients diagnosed with colon cancer was 50% to 59% in many countries. However, in North America, Oceania, some European countries, and a few countries in Central and South America and Asia, the 5-year survival reached 60% or more. Interestingly, the rate was less than 40% in India, Indonesia, and Mongolia.<sup>24</sup> RCC survival was not included in this analysis. In our analysis, despite different baseline characteristics, OS, PFS, and ORR were similar among most geographic regions. It is important to note that patients included in our analysis are part of clinical trials, and their clinical outcomes may not reflect the real-world population. Clinical studies provide an opportunity to give patients access to health care and drugs that otherwise will not be available. We hypothesize that, if we are able to provide



patients access to standard and experimental treatment approaches, clinical outcomes might not be so divergent across geographic regions. Interestingly, a statistically significantly shorter OS was observed in WE compared with USC in a univariable analysis (20.3 v 17.4 months). However, the significance was not maintained in a multivariable analysis, which suggests that outcomes may not be so divergent if patients have access to care or clinical trials. We also did not identify differences in clinical outcome according to country income or life expectancy.

Recently, studies have demonstrated that higher rates of toxicity related to cancer treatment may occur more frequently in Asian patients than in white populations.<sup>25</sup> In our analysis, we did not identify significant differences in any-grade or grade 3 to 5 AEs across different geographic regions. However, AEs were observed more frequently in USC. In addition, though a broad range of targeted therapies was included in our analysis, not every region enrolled patients in all the clinical trials, and data about recently approved agents, such as cabozantinib and nivolumab, are lacking.

Cancer is a genomic disorder, and its development depends on the interaction of genetic and environmental factors that result in different disease phenotypes.<sup>26</sup> Geographic differences in cancer incidence, prognosis, and clinical outcome may be related to genomic diversity.<sup>27</sup> Recently, the molecular characterization of RCC was reported, and genomic alterations have been associated with clinical outcomes and response to treatment.<sup>28,29</sup> Interestingly, not all populations have been represented in these studies, and the RCC biology within each distinct ethnicity has not been characterized. It is important to note that many widely used genomic platforms available in western countries are not yet available in developing countries. Therefore, the characterization of populations across different regions may improve the understanding of the biology of RCC in different populations and guide rational global investments. As observed in prostate cancer, ethnicity may play a role in the clinical course of RCC. African Americans have higher incidences of prostate cancer and a higher

mortality rate than white patients.<sup>30</sup> Recent studies have suggested that the *TMPRSS2-ERG* gene fusion is significantly different in white, African American, and Japanese populations.<sup>31</sup> These findings have opened avenues to understand disparities observed in different populations. Whether a biologic basis exists to justify differences in mRCC clinical outcome across geographic regions remains unclear and still must be explored.

We evaluated a large cohort of patients with mRCC by using prospectively collected clinical trials data, but our study has many limitations. First, enrollment of all patients in clinical trials, limits the generalizability of our data. In addition, though a broad range of targeted therapies was included in our analysis, not every region enrolled patients in all the clinical trials in our cohort, so data about recently approved agents, such as cabozantinib and nivolumab, are lacking. Finally, lack of information about biology from the different population may affect the results of this analysis.

During the past decade, there has been a paradigm shift in the treatment of cancer driven by advances in personalized medicine and immuno-oncology. Access to improved therapeutic options can change the outcomes of patients globally affected by mRCC. In our cohort, we observed differences in patient and treatment characteristics according to the geographic regions, and these differences may play a role in the reported efficacy and safety of targeted therapies. A better understanding of factors that may contribute to these differences—including different disease biology, access to care, data reporting, and quality of care—must be explored to better inform attempts at personalized medicine across the globe. We highlight that, despite different baseline characteristics, OS was similar among patients enrolled in clinical trials across different geographic regions. Access to clinical trials may be an important alternative to eliminate health disparities and promote health equity in patients with mRCC.

DOI: <https://doi.org/10.1200/JGO.17.00119>

Published online on [jgo.org](http://jgo.org) on January 11, 2018.

#### AUTHOR CONTRIBUTIONS

**Conception and design:** Andre P. Fay, Rana R. McKay, Ronit Simantov, Toni K. Choueiri

**Collection and assembly of data:** Rana R. McKay, Xun Lin, Ronit Simantov, Toni K. Choueiri

**Data analysis and interpretation:** All authors

**Manuscript writing:** All authors

**Final approval of manuscript:** All authors

**Agree to be accountable for all aspects of the work:** All authors

**Rana R. McKay**

**Research Funding:** Pfizer (Inst), Bayer (Inst)

**Xun Lin**

**Employment:** Pfizer

**Stock and Other Ownership Interests:** Pfizer

**Ronit Simantov**

**Employment:** Pfizer

**Stock and Other Ownership Interests:** Pfizer

**Toni K. Choueiri**

**Honoraria:** National Comprehensive Cancer Network, UpToDate

**Consulting or Advisory Role:** Pfizer, Bayer, Novartis, GlaxoSmithKline, Merck, Bristol-Myers Squibb, Roche, Genentech, Eisai, Foundation Medicine, Cerulean Pharma, AstraZeneca, Peloton Therapeutics, Exelixis, Prometheus, Alligent, Ipsen

**Research Funding:** Pfizer (Inst), Novartis (Inst), Merck (Inst), Exelixis (Inst), Tracoon Pharma (Inst), GlaxoSmithKline (Inst), Bristol-Myers Squibb (Inst), AstraZeneca (Inst), Peloton Therapeutics (Inst), Roche (Inst), Genentech (Inst), Celldex (Inst), Agensys (Inst)

**Travel, Accommodations, Expenses:** Pfizer

#### AUTHORS' DISCLOSURES OF POTENTIAL CONFLICTS OF INTEREST

The following represents disclosure information provided by authors of this manuscript. All relationships are considered compensated. Relationships are self-held unless noted. I = Immediate Family Member, Inst = My Institution. Relationships may not relate to the subject matter of this manuscript. For more information about ASCO's conflict of interest policy, please refer to [www.asco.org/rwc](http://www.asco.org/rwc) or [ascopubs.org/jco/site/ifc](http://ascopubs.org/jco/site/ifc).

**Andre P. Fay**

**Honoraria:** Pfizer, Novartis, Bristol-Myers Squibb, AstraZeneca, Roche

**Consulting or Advisory Role:** Novartis, Roche, Pfizer

#### ACKNOWLEDGMENT

We thank the patients and investigators who participated in the clinical trials used for this analysis.

#### Affiliations

**Andre P. Fay**, Hospital São Lucas/Pontifícia Universidade Católica do Rio Grande do Sul, Porto Alegre, Brazil; **Rana R. McKay**, University of California San Diego, San Diego, CA; **Xun Lin** and **Ronit Simantov**, Pfizer Oncology, New York, NY; and **Toni K. Choueiri**, Dana-Farber Cancer Institute, Boston, MA.

#### Support

Supported by Pfizer and in part by the Dana-Farber/Harvard Cancer Center (DF/HCC) Kidney SPORE, DF/HCC Kidney Cancer Program and the Trust Family, Michael Brigham, and Loker Pinard Funds for Kidney Cancer Research at Dana-Farber Cancer Institute (for T.K.C.).

#### Prior Presentation

Presented at the Annual Meeting of the American Society of Clinical Oncology, Chicago, IL, June 2-6, 2017.

#### REFERENCES

1. Fitzmaurice C, Dicker D, Pain A, et al: The global burden of cancer, 2013. *JAMA Oncol* 1:505-527, 2015
2. Torre LA, Bray F, Siegel RL, et al: Global cancer statistics, 2012. *CA Cancer J Clin* 65:87-108, 2015
3. Znaor A, Lortet-Tieulent J, Laversanne M, et al: International variations and trends in renal cell carcinoma incidence and mortality. *Eur Urol* 67:519-530, 2015
4. de Souza JA, Hunt B, Asirwa FC, et al: Global health equity: Cancer care outcome disparities in high-, middle-, and low-income countries. *J Clin Oncol* 34:6-13, 2016
5. Lopes GL Jr, de Souza JA, Barrios C: Access to cancer medications in low- and middle-income countries. *Nat Rev Clin Oncol* 10:314-322, 2013
6. US Department of Health and Human Services: The Secretary's Advisory Committee on National Health Promotion and Disease Prevention Objectives for 2020: Phase I report—Recommendations for the framework and format of Healthy People 2020. Section IV. Advisory Committee findings and recommendations. Washington, DC, US Dept of Health & Human Services., 2008 [https://www.healthypeople.gov/sites/default/files/Phasel\\_0.pdf](https://www.healthypeople.gov/sites/default/files/Phasel_0.pdf)

7. Krieger N: Defining and investigating social disparities in cancer: Critical issues. *Cancer Causes Control* 16:5-14, 2005
8. WHO: World cancer report 2014. <http://publications.iarc.fr/Non-Series-Publications/World-Cancer-Reports/World-Cancer-Report-2014>
9. Linehan WM, Spellman PT, Ricketts CJ, et al: Comprehensive molecular characterization of papillary renal-cell carcinoma. *N Engl J Med* 374:135-145, 2016
10. Heng DY, Choueiri TK: The evolving landscape of metastatic renal cell carcinoma. *Am Soc Clin Oncol Educ Book* 299-302, 2012
11. Motzer RJ, Hutson TE, Tomczak P, et al: Sunitinib versus interferon alfa in metastatic renal-cell carcinoma. *N Engl J Med* 356:115-124, 2007
12. Barrios CH, Herchenhorn D, Chacón M, et al: Safety and efficacy of sunitinib in patients from Latin America: Subanalysis of an expanded access trial in metastatic renal cell carcinoma. *Onco Targets Ther* 9:5839-5845, 2016
13. The World Bank: World Bank data bank. <http://databank.worldbank.org/data/home.aspx>
14. WHO: World health statistics 2015. [http://www.who.int/gho/publications/world\\_health\\_statistics/2015/en/](http://www.who.int/gho/publications/world_health_statistics/2015/en/)
15. Goss PE, Lee BL, Badovinac-Crnjevic T, et al: Planning cancer control in Latin America and the Caribbean. *Lancet Oncol* 14:391-436, 2013
16. Union for International Cancer Control: The economics of cancer prevention & control data digest 2014. [https://www.uicc.org/sites/main/files/atoms/files/WCLS2014\\_economics\\_of\\_cancer\\_FINAL.pdf](https://www.uicc.org/sites/main/files/atoms/files/WCLS2014_economics_of_cancer_FINAL.pdf)
17. Heng DY, Xie W, Regan MM, et al: External validation and comparison with other models of the International Metastatic Renal-Cell Carcinoma Database Consortium prognostic model: A population-based study. *Lancet Oncol* 14:141-148, 2013
18. McGuire S: World Cancer Report 2014: Geneva, Switzerland: World Health Organization, International Agency for Research on Cancer, WHO Press, 2015. *Adv Nutr* 7:418-419, 2016
19. Wolin KY, Carson K, Colditz GA: Obesity and cancer. *Oncologist* 15:556-565, 2010
20. Albiges L, Ari Hakimi A, Lin X, et al: The impact of BMI on outcomes of patients with metastatic renal cell carcinoma treated with targeted therapy: An external validation data set and analysis of underlying biology from The Cancer Genome Atlas. *J Clin Oncol* 33(suppl; abstr 405):, 2015
21. Webber L, Kilpi F, Marsh T, et al: High rates of obesity and non-communicable diseases predicted across Latin America. *PLoS One* 7:e39589, 2012
22. McKay RR, Lin X, Albiges L, et al: Statins and survival outcomes in patients with metastatic renal cell carcinoma. *Eur J Cancer* 52:155-162, 2016
23. Goss PE, Strasser-Weippl K, Lee-Bychkovsky BL, et al: Challenges to effective cancer control in China, India, and Russia. *Lancet Oncol* 15:489-538, 2014
24. Allemani C, Weir HK, Carreira H, et al: Global surveillance of cancer survival 1995-2009: Analysis of individual data for 25,676,887 patients from 279 population-based registries in 67 countries (CONCORD-2). *Lancet* 385:977-1010, 2015
25. Tomita Y, Shinohara N, Yuasa T, et al: Overall survival and updated results from a phase II study of sunitinib in Japanese patients with metastatic renal cell carcinoma. *Jpn J Clin Oncol* 40:1166-1172, 2010
26. Hanahan D, Weinberg RA: Hallmarks of cancer: The next generation. *Cell* 144:646-674, 2011
27. Tan DS, Mok TS, Rebbeck TR: Cancer genomics: Diversity and disparity across ethnicity and geography. *J Clin Oncol* 34:91-101, 2016
28. Kwiatkowski DJ, Choueiri TK, Fay AP, et al: Mutations in TSC1, TSC2, and MTOR are associated with response to rapalogs in patients with metastatic renal cell carcinoma. *Clin Cancer Res* 22:2445-2452, 2016

29. Hsieh JJ, Chen D, Wang PI, et al: Genomic biomarkers of a randomized trial comparing first-line everolimus and sunitinib in patients with metastatic renal cell carcinoma. *Eur Urol* 71:405-414, 2017
30. Hankey BF, Feuer EJ, Clegg LX, et al: Cancer surveillance series: Interpreting trends in prostate cancer—Part I. Evidence of the effects of screening in recent prostate cancer incidence, mortality, and survival rates. *J Natl Cancer Inst* 91:1017-1024, 1999
31. Magi-Galluzzi C, Tsusuki T, Elson P, et al: TMPRSS2-ERG gene fusion prevalence and class are significantly different in prostate cancer of Caucasian, African-American, and Japanese patients. *Prostate* 71:489-497, 2011

**Table A1.** Baseline Demographic and Survival Features by Country

Country	Geographic Region	World Data Bank Income Level	WHO 2015 Life Expectancy (years)
South Africa	Africa	Upper-middle	60
China	Asia	Upper-middle	75
Hong Kong	Asia	High	75
India	Asia	Lower-middle	66
Japan	Asia	High	84
Korea	Asia	High	82
Malaysia	Asia	Upper-middle	74
Philippines	Asia	Lower-middle	69
Russian Federation	Asia	High	69
Singapore	Asia	High	83
Taiwan	Asia	High	75
Turkey	Asia	Upper-middle	75
Belarus	Eastern Europe	Upper-middle	72
Bosnia and Herzegovina	Eastern Europe	Upper-middle	77
Bulgaria	Eastern Europe	Upper-middle	75
Czech Republic	Eastern Europe	High	78
Hungary	Eastern Europe	High	75
Latvia	Eastern Europe	High	74
Lithuania	Eastern Europe	High	74
Poland	Eastern Europe	High	77
Romania	Eastern Europe	Upper-middle	74
Serbia	Eastern Europe	Upper-middle	75
Slovakia	Eastern Europe	High	76
Ukraine	Eastern Europe	Lower-middle	71
Argentina	Latin America	High	76
Brazil	Latin America	Upper-middle	75
Chile	Latin America	High	80
Colombia	Latin America	Upper-middle	78
Mexico	Latin America	Upper-middle	75
Australia	Oceania	High	83
Canada	United States/ Canada	High	82
United States	United States/ Canada	High	79
Austria	Western Europe	High	81
Denmark	Western Europe	High	80
Finland	Western Europe	High	81

(Continued on following page)

**Table A1.** Baseline Demographic and Survival Features by Country (Continued)

<b>Country</b>	<b>Geographic Region</b>	<b>World Data Bank Income Level</b>	<b>WHO 2015 Life Expectancy (years)</b>
France	Western Europe	High	82
Germany	Western Europe	High	81
Greece	Western Europe	High	81
Ireland	Western Europe	High	81
Italy	Western Europe	High	83
Netherlands	Western Europe	High	81
Portugal	Western Europe	High	81
Spain	Western Europe	High	83
Sweden	Western Europe	High	82
Switzerland	Western Europe	High	83
United Kingdom	Western Europe	High	81