



# Myelin-oligodendrocyte glycoprotein antibody-associated disease

Romain Marignier, Yael Hacohen, Alvaro Cobo-Calvo, Anne-Katrin Pröbstel, Orhan Aktas, Harry Alexopoulos, Maria-Pia Amato, Nasrin Asgari, Brenda Banwell, Jeffrey Bennett, Fabienne Brilot, Marco Capobianco, Tanuja Chitnis, Olga Ciccarelli, Kumaran Deiva, Jérôme De Sèze, Kazuo Fujihara, Anu Jacob, Ho Jin Kim, Ingo Kleiter, Hans Lassmann, Maria-Isabel Leite, Christopher Linington, Edgar Meinl, Jacqueline Palace, Friedemann Paul, Axel Petzold, Sean Pittock, Markus Reindl, Douglas Kazutoshi Sato, Krzysztof Selmaj, Aksel Siva, Bruno Stankoff, Mar Tintore, Anthony Traboulsee, Patrick Waters, Emmanuelle Waubant, Brian Weinschenker, Tobias Derfuss, Sandra Vukusic, Bernhard Hemmer

*Lancet Neurol* 2021; 20: 762–72

This online publication has been corrected.

The corrected version first appeared at [thelancet.com/neurology](http://thelancet.com/neurology) on August 27, 2021

See [Comment](#) page 695

Service de Neurologie, Sclérose en Plaques, Pathologies de la Myéline et Neuro-

Inflammation, and Centre de Référence des Maladies Inflammatoires Rares du Cerveau et de la Moelle, Hôpital Neurologique Pierre

Wertheimer, Bron, France

(Prof R Marignier MD,

Prof S Vukusic, MD); Centre des Neurosciences de Lyon,

INSERM 1028 et CNRS

UMR5292, Lyon, France

(Prof R Marignier,

Prof S Vukusic); Université

Claude Bernard Lyon 1, Lyon,

France (Prof R Marignier,

Prof S Vukusic); Queen Square

Multiple Sclerosis Centre,

UCL Institute of Neurology,

Faculty of Brain Sciences,

University College London,

London, UK (Y Hacohen MD,

Prof O Ciccarelli MD); Centre

d'Esclerosi Múltiple de

Catalunya, Department of

Neurology/Neuroimmunology,

Hospital Universitari

Vall d'Hebron, Universitat

Autònoma de Barcelona,

Barcelona, Spain

(A Cobo-Calvo MD,

Prof M Tintore MD); Neurologic

Clinic and Polyclinic and

Research Center for Clinical

Neuroimmunology and

Neuroscience, Departments of

Medicine, Biomedicine, and

Clinical Research, University

Hospital Basel, University of

Basel, Basel, Switzerland

(A-K Pröbstel MD,

Prof T Derfuss MD); Medical

Faculty, Department of

Neurology, Heinrich Heine

University Düsseldorf,

Düsseldorf, Germany

(Prof O Aktas MD);

Neuroimmunology Unit,

Myelin-oligodendrocyte glycoprotein antibody-associated disease (MOGAD) is a recently identified autoimmune disorder that presents in both adults and children as CNS demyelination. Although there are clinical phenotypic overlaps between MOGAD, multiple sclerosis, and aquaporin-4 antibody-associated neuromyelitis optica spectrum disorder (NMOSD) cumulative biological, clinical, and pathological evidence discriminates between these conditions. Patients should not be diagnosed with multiple sclerosis or NMOSD if they have anti-MOG antibodies in their serum. However, many questions related to the clinical characterisation of MOGAD and pathogenetic role of MOG antibodies are still unanswered. Furthermore, therapy is mainly based on standard protocols for aquaporin-4 antibody-associated NMOSD and multiple sclerosis, and more evidence is needed regarding how and when to treat patients with MOGAD.

## Introduction

Myelin-oligodendrocyte glycoprotein (MOG) constitutes a quantitatively minor component (0.05%) of CNS myelin<sup>1</sup> and is expressed on the outer lamella of the myelin sheath.<sup>1,2</sup> Although MOG knockout mice display normal myelin ultrastructure and no distinctive phenotype,<sup>3</sup> in humans MOG is thought to be involved in completion and maintenance of the myelin sheath and in cell–cell communication. MOG has been controversially discussed as a putative autoantigen in autoimmune CNS demyelinating diseases for decades,<sup>4</sup> but it is well established as an antigenic target in the experimental autoimmune encephalomyelitis mouse model.<sup>5,6</sup> The emergence of protein conformation-dependent assays<sup>7</sup> for the detection of anti-MOG antibodies has revealed distinct clinical phenotypes in children and adults with CNS demyelination.<sup>8,9</sup> Different terms have been proposed to characterise patients with CNS syndromes associated with the presence of anti-MOG antibodies. We will use here the term MOG antibody-associated disease (MOGAD), which suggests that this is a distinct disorder but does not preclude the future incorporation of a yet unidentified clinical presentation, and does not imply pathogenicity of the antibody itself.

Although there are clinical phenotypic overlaps between MOGAD, multiple sclerosis, and neuromyelitis optica spectrum disorder (NMOSD) associated with anti-aquaporin-4 (AQP4) antibodies (AQP4-NMOSD), cumulative biological, clinical, and neuropathological evidence clearly discriminates between these conditions. In patients with MOGAD, lesions are characterised by inflammatory demyelination, and not astrocytopathy as seen in AQP4-NMOSD. The perivascular deposits of activated complement proteins and immunoglobulins that are typical for multiple sclerosis lesions are also rarely found in patient with MOGAD.<sup>10</sup> Furthermore, although MOGAD shares some pathological features

with multiple sclerosis (eg, demyelination and immune-cell infiltration), the lesions in MOGAD are characterised by perivascular infiltrated MOG-laden macrophages and CD4<sup>+</sup> T-cell infiltration; by contrast, multiple sclerosis lesions are characterised by infiltration by CD8<sup>+</sup> T cells.<sup>10</sup>

There are many unanswered questions related to the clinical characterisation of MOGAD and the pathogenetic role of anti-MOG antibodies, and more evidence is needed regarding who, how, and when to treat. This Personal View is based on a focused workshop on MOGAD, organised by the European Committee for Treatment and Research in Multiple Sclerosis, held in Athens, Greece, March 7–9, 2019. Our aim is to review and discuss the immunology, pathology, clinical spectrum, and treatment of MOGAD.

## Clinical features in adults and children

MOGAD accounts for approximately 1.2–6.5% of all demyelinating syndromes in adults.<sup>11,12</sup> In children (<18 years), the frequency of anti-MOG antibody seropositivity during a first acute demyelinating syndrome is high, with multinational studies from Europe,<sup>13–15</sup> North America,<sup>16</sup> and Australia<sup>17</sup> identifying these antibodies in about 40% of all acute demyelinating syndrome presentations.<sup>18</sup> The most common presentations, stratified according to the different demyelinating phenotypes, are summarised in table 1 (appendix pp 2–5).

In both adult and children, the frequency of MOGAD is phenotype dependent. A single-centre retrospective study detected anti-MOG antibodies in the serum of 12 (60%) of 20 of adults with acute disseminated encephalomyelitis either at onset or at follow-up.<sup>19</sup> A Danish population-based prospective study detected anti-MOG antibodies in two (4%) of 51 adults with a first episode of optic neuritis,<sup>20</sup> and the multicentre, randomised, placebo controlled Optic Neuritis Treatment Trial reported anti-MOG antibodies in three (2%) of 177 individuals.<sup>21</sup> In anti-AQP4

	Optic neuritis	Transverse myelitis	Acute disseminated encephalomyelitis
Clinical features	Up to 80% of patients, either at onset or during the disease course; simultaneous bilateral involvement in up to 40%; average high contrast visual acuity at nadir counting figures; optic nerve head swelling (papillitis); might have peripapillary haemorrhage; more steroid responsive than in AQP4-NMOSD and multiple sclerosis	Spinal cord involvement in 30% of episodes at onset and up to 50% during the disease course; motor disability might be similar to AQP4-NMOSD; urinary, bowel, and erectile dysfunction are common; more steroid responsive than AQP4-NMOSD and multiple sclerosis	Most frequent presentation in children (<18 years); only in about 5% of adult presentations; seizures at onset observed in up to 40% of children with acute disseminated encephalomyelitis; MOG antibody associated ADEM at higher risk of higher risk of post-acute disseminated encephalomyelitis epilepsy
Imaging	Extensive T2-weighted and gadolinium enhancing lesion in the optic nerve or chiasm, more evident on orbit MRI; predominates in the anterior parts of nerve but might extend to optic chiasm; perineural gadolinium enhancement; peripapillary retinal nerve fibre layer thinning frequent on OCT but clinical-radiological paradox (despite severe atrophy of retinal nerve fibre layer, visual acuity is preserved); attack related retinal nerve fibre layer thinning with temporal predominance; microcystic macular in 24%	Initially described as longitudinally extensive transverse myelitis but short myelitis in up to 40%; involvement of the conus medullaris (more frequent than in MS and AQP4NMOSD); abnormalities confined to grey matter (sagittal line and axial H sign) and nerve roots; less frequent gadolinium enhancement than AQP4-NMOSD and multiple sclerosis; initial spinal cord MRI negative in 10% of patients; frequent complete resolution at follow-up scan	Large, hazy, and poorly demarcated asymmetrical bilateral lesions; deep grey matter involvement, most commonly affecting the thalamus; lesions might be highly enhancing; corpus callosum, brainstem and cerebellum involved; frequently associated to spinal cord involvement; frequent complete resolution at follow-up scan
CSF	Rare oligoclonal bands (<10%); presence of frequent mild lymphocytic pleocytosis	Rare oligoclonal bands (<10%); presence of frequent mild lymphocytic pleocytosis	Rare oligoclonal bands (<10%); presence of frequent mild lymphocytic pleocytosis
Risk of relapse and outcome	Patients aged <45 years at higher risk of relapse than older ones (>18 years); permanent visual impairment (visual acuity <20/100) rare at 2 years; reversible visual dysfunction from first episode in up to 75%; progressive thinning of peripapillary retinal nerve fibre layer (but not of the combined ganglion cell and inner plexiform layer) might be observed in absence of new clinical attacks	Good or full recovery from the onset attack in 60% younger patients (<18 years); around 20% of patients had permanent motor disability at 2 years (disability status scale >3.0); irreversible motor disability at last follow-up was explained by disability at onset attack in 68.4% patients who reached DSS 3.0 and 87.5% who reached disability status scale EDSS 6.0; permanent bowel, bladder, and erectile dysfunction are frequent despite good motor recovery	Up to 50% of children (<18 years) will relapse after acute disseminated encephalomyelitis; phenotype at relapse might be multiple disseminated encephalomyelitis, or acute disseminated encephalomyelitis-optic neuritis; a small proportion of children (<18 years) will have a single relapse within 3 months; behavioural and cognitive problems might occur after acute disseminated encephalomyelitis and are more common in relapsing group (up to 50%); up to 10% (predominantly very young children [younger than 7 years]) can develop a leukodystrophy-like phenotype with large confluent highly enhancing lesions and significant brain atrophy over time

Other, less common, phenotypes have also been reported in patients with MOG-Ab; (1) isolated brainstem involvement in about 7% of adults and 30% of children (younger than 18 years; postrema syndrome is rare); (2) cortical (unilateral or bilateral) encephalitis with or without white matter involvement; (3) cranial neuropathies or mixed central and peripheral syndromes; (4) features of chronic lymphocytic inflammation with pontine perivascular enhancement responsive to steroids; (5) pseudotumour cerebri-like, associating bilateral papillitis to elevated CSF opening pressure. For references and information, please see appendix (pp 2–5). MOG=myelin-oligodendrocyte glycoprotein. AQP4-NMOSD=anti-aquaporin-4 antibody-associated neuromyelitis optica spectrum disorder. OCT=optical coherence tomography. EDSS=expanded disability status scale. ADEM=acute disseminated encephalomyelitis

**Table 1: Main clinical and paraclinical features in anti-MOG antibody-associated disease**

Department of Pathophysiology, Faculty of Medicine, National and Kapodistrian University of Athens, Athens, Greece (H Alexopoulos Dphil); IRCCS Fondazione Don Carlo Gnocchi, University of Florence, Florence, Italy (Prof M-P Amato MD); Institute of Regional Health Research and Institute of Molecular Medicine, University of Southern Denmark, Odense, Denmark (Prof N Asgari MD); Division of Child Neurology, Children’s Hospital of Philadelphia, Philadelphia, PA, USA (Prof B Banwell MD); Department of Neurology and Department of Pediatrics, Perelman School of Medicine at the University of Pennsylvania, Philadelphia, PA, USA (Prof B Banwell); Department of Neurology and Department of Ophthalmology, Programs in Neuroscience and Immunology, University of Colorado Anschutz Medical Campus, Aurora, CO, USA (Prof J Bennet MD); Brain Autoimmunity Group, Kids Neuroscience Centre, Kids Research at the Children’s Hospital at Westmead, Brain and Mind Centre and School of Medical Sciences, Faculty of Medicine and Health, University of Sydney, Sydney, NSW, Australia (F Brilot MD); Regional Multiple Sclerosis Centre, Department of Neurology, University Hospital San Luigi, Orbassano, Italy (M Capobianco MD); Department of Pediatric Neurology, Massachusetts General Hospital, Harvard Medical School, Boston, MA, USA (Prof T Chitnis MD); Assistance Publique-Hôpitaux de Paris, Hôpitaux Universitaires Paris-Sud, Hôpital Bicêtre, Pediatric Neurology Department, National Referral Center for Rare Inflammatory Brain and Spinal Diseases, Université Paris-Sud, and UMR 1184-CEA-IDMIT, Center for Immunology of Viral Infections and Autoimmune Diseases, Le Kremlin Bicêtre, France (Prof K Deiva MD); Department of Neurology, Strasbourg University Hospital and Clinical Investigation Center, INSERM 1434, Strasbourg, France (Prof J De Seze MD); Department of Multiple

antibody seronegative longitudinally extensive transverse myelitis, two retrospective studies reported that 16–23% of individuals were anti-MOG antibody seropositive.<sup>22,23</sup> MOG antibodies are identified in up to 64% of children with acute demyelinating encephalomyelitis<sup>24</sup> and in almost all those who relapse after acute disseminated encephalomyelitis (multiphasic acute disseminated encephalomyelitis or acute disseminated encephalomyelitis-optic neuritis),<sup>25–28</sup> but in 33–43% of children presenting with optic neuritis<sup>14,16,28</sup> and only three (6%) of 50 patients with paediatric myelitis.<sup>28</sup> Anti-MOG antibodies were identified in 26 (24%) of 110 children with relapsing demyelinating syndrome and 26 (54%) of 48 with non-multiple sclerosis relapsing demyelination.<sup>9</sup> Most studies describing the frequency of anti-MOG antibodies and the clinical phenotypes associated with them were done in tertiary referral centres for neuroinflammatory

disorders, which might lead to selection bias. This is especially relevant when evaluating patients with clinical phenotypes such as optic neuritis or myelitis, who might be referred to such centres only because of severe or atypical presentation. In addition, the first cohorts evaluated for anti-MOG antibodies by cell-based assay were restricted to patients with monophasic or recurrent optic neuritis or myelitis, thus not reflecting the real frequency of anti-MOG antibodies across all acute and chronic inflammatory demyelinating CNS diseases.<sup>29–32</sup> Clinical phenotypes and paraclinical features stratified by age at onset are summarized in table 2.

No racial groups seem to be more or less likely to be diagnosed with MOGAD, by contrast with AQP4-NMOSD which is more common in non-White people. An equal number of males and females have MOGAD among young children (age <10 years), with a slight

Sclerosis Therapeutics, Fukushima Medical University School of Medicine Koriyama, Japan (Prof K Fujihara MD); Multiple Sclerosis and Neuromyelitis Optica Center, Southern TOHOKU Research Institute for Neuroscience, Koriyama, Japan (Prof K Fujihara); Division of Multiple Sclerosis and Autoimmune Neurology, Neurological Institute, Cleveland Clinic Abu Dhabi, Abu Dhabi, United Arab Emirates (A Jacob MD); Walton Centre National Health Service Trust, Liverpool, UK (A Jacob); Department of Neurology, Research Institute and Hospital of National Cancer Center, Goyang, Korea (Prof Ho Jin Kim MD); Marianne-Strauß-Klinik, Behandlungszentrum Kempfenhausen für Multiple Sklerose Kranke, Berg, Germany (Prof I Kleiter MD); Department of Neurology, Ruhr-University Bochum, Bochum, Germany (Prof I Kleiter); Department of Neuroimmunology, Center for Brain Research, Medical University of Vienna, Vienna, Austria (Prof H Lassmann PhD); Nuffield Department of Clinical Neurosciences, John Radcliffe Hospital, University of Oxford, Oxford, UK (M-I Leite MD, Prof J Palace MD, P Waters PhD); Institute of Infection, Immunity and Inflammation, University of Glasgow, Glasgow, UK (Prof C Lington PhD); Institute of Clinical Neuroimmunology, Biomedical Center and University Hospitals, Ludwig Maximilian University Munich, Germany (Prof E Meinl MD); NeuroCure Clinical Research Center, Charité-Universitätsmedizin Berlin, Corporate Member of Freie Universität Berlin, Humboldt-Universität zu Berlin, and Berlin Institute of Health, and Experimental and Clinical Research Center, Max Delbrueck Center for Molecular Medicine and Charité-Universitätsmedizin Berlin, Berlin, Germany (Prof F Paul MD); Moorfields Eye Hospital and National Hospital for Neurology and Neurosurgery, London, UK (Prof A Petzold MD); University College London Queen Square Institute of Neurology,

	Children			Adults			
	<10 years	10–17 years	All Children	18–39 years	40–59 years	≥ 60 years	All adults
Female to male ratio <sup>33,38</sup>	Similar	Similar	Similar	Slightly more female	Slightly more female	Slightly more female	Slightly more female
Presentation at onset <sup>8,28,36,37</sup>							
Optic neuritis	20–30%	50–60%	20–60%	50–65%	50–65%	50–70%	50–70%
Transverse myelitis	15–20%	15–20%	15–20%	20–40%	20–40%	20–40%	20–40%
Acute disseminated encephalomyelitis	50–60%	20–30%	20–60%	<8%	<8%	<8%	<8%
Brainstem demyelination	<10%	<10%	<10%	<10%	<10%	<10%	<10%
Patients relapsing at 2 years <sup>8,15,33</sup>	NA	NA	40%	NA	NA	NA	40–44%
Risk of relapse <sup>38</sup>	Very low	Low	Low	Moderate	Moderate	Very low	Moderate
Mean annualised relapse rate (SD) <sup>38</sup>	0.17 (0.31)	0.28 (0.38)	0.23 (0.35)	0.39 (0.62)	0.31 (0.52)	0.15 (0.27)	0.35 (0.58)
CSF oligoclonal bands <sup>54,55</sup>	<5%	<12%	<10%	<10%	<10%	<10%	<10%
Motor disability (reaching EDSS 3.0) <sup>33,38</sup>	<10%	<10%	<10%	20–30%	20–35%	30–40%	20–40%
Visual acuity disability (reaching visual acuity 0.2) <sup>38</sup>	<10%	<10%	<10%	<10%	10–20%	10–20%	<20%
Bladder, bowel, and erectile dysfunction or all three <sup>33</sup>	NA	NA	20%	NA	NA	NA	28–46%
Annualised relapse rate was calculated as number of relapses per year before treatment (excluding index event) and on-treatment only in patients with at least 6 months follow-up after initiation of treatment. Relapses were analysed for up to 2 years before initiation of therapy and for the duration of the time on therapy. No data are evaluable on the risk of relapse and bladder, bowel, and erectile dysfunction or all three stratified to the different age groups. We have therefore included a reference for all children and all adults. Refrain from drawing definitive conclusions regarding visual acuity disability and bladder, bowel, and erectile dysfunction or all three in children due to probable recall bias. Very low=lower risk than the reference category. Low risk=0–30% higher risk than the reference category. Moderate risk=30–60% higher risk than the reference category. EDSS=expanded disability status scale. NA=not applicable. * Age group <10 years old is the reference category. †Based on cohorts of patients with a median follow-up between 2 and 4 years.							

Table 2: Demographic, clinical, and laboratory differences according to age at onset in myelin-oligodendrocyte glycoprotein antibody-associated disease

female predominance (less than in patients with AQP4-NMOSD) in older post-pubertal children and adults.<sup>33</sup> No definitive evidence has linked MOGAD with other autoimmune diseases or specific malignancy. Although an HLA association, similar to other autoantibody associated disease might be expected, a study of 43 Dutch patients with MOGAD showed no significant HLA association.<sup>34</sup> As in other genetic and acquired white matter diseases, there is an age-dependent phenotype in MOGAD:<sup>35</sup> Younger children are more likely to have brain involvement compared with older children and adults.<sup>36,37</sup> Similar to multiple sclerosis, both the severity of the attacks and the recovery from attacks are also age-dependent, with worse severity and more complete and faster recovery in children.<sup>38</sup> The risk of relapse is lower in children, with most remaining monophasic.<sup>16</sup> Less than 10% of children who relapse (typically very young children [ $<7$  years]) develop a leukodystrophy-like phenotype, with large confluent highly enhancing lesions on MRI and substantial brain atrophy over time.<sup>35</sup> These children have poor outcomes, with permanent cognitive and motor disabilities.<sup>35</sup> Younger children ( $<7$  years) are more likely to have symptomatic brain involvement compared with older children and adults.<sup>37</sup>

Cohort studies and case reports have shown that the disease course is heterogeneous. The number of clinical relapses itself does not accurately explain disability accrual at the individual level, possibly because of individual differences in the susceptibility for myelin

damage and mechanisms of remyelination and repair. For instance, children younger than 9 years are more likely to have severe brain pathology, with higher lesion load detected on conventional imaging, than children aged 9 years and older;<sup>37</sup> nevertheless, recovery from acute attacks appears faster than in older children and adults. This finding might not be disease specific and was also observed in a comparison between adult and children with multiple sclerosis showing that every 10 years of age reduced recovery on the expanded disability status scale by 0.15 points.<sup>39</sup> It is estimated that about 40% of adults<sup>40,33</sup> and 30%<sup>18</sup> of children<sup>28</sup> with MOGAD present with a second clinical attack within 5 years.

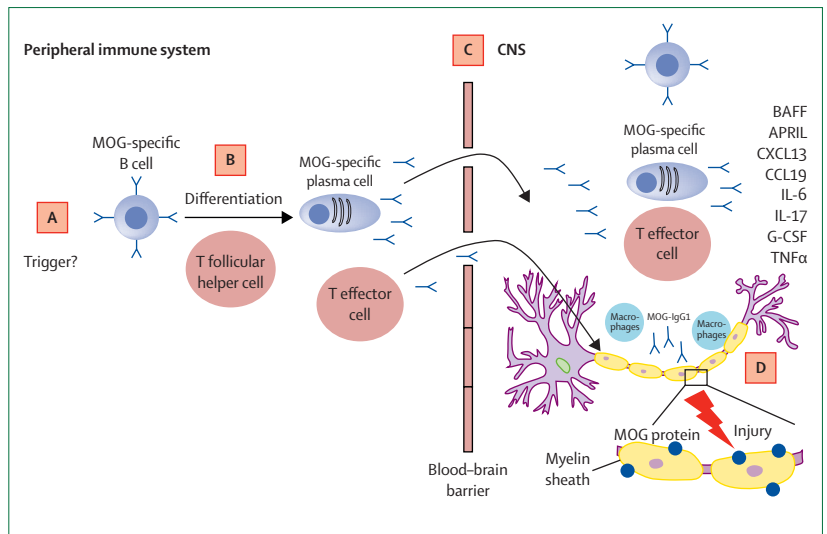
Approximately 60% of adult patients develop permanent neurological deficits, including motor and visual symptoms<sup>41</sup> and about 50% of children with relapsing MOGAD and brain involvement develop cognitive problems.<sup>37</sup> Prediction of disability based on characteristics of the first attack remains elusive. Early studies suggested that high anti-MOG antibody titres could predict further clinical events,<sup>15</sup> but more recent data indicate that patients might remain seropositive for many years and not relapse, and even patients who become seronegative could still relapse (and become seropositive at time of relapse).<sup>16</sup> Antibody titres, even when measured longitudinally, did not clearly correlate with disability outcomes.<sup>8</sup> Similarly, baseline MRI parameters are not predictive of risk of relapse or disability.<sup>16,33</sup>

## Biomarkers

### Assays for anti-MOG antibody detection

Over the last 10 years, great efforts have been made to improve anti-MOG antibody detection techniques.<sup>42</sup> More consistent results were obtained when the substrate for the tests were recombinant antigens expressed on live cells. As glycosylation and conformation of the MOG protein play a key role in anti-MOG antibody recognition,<sup>43–46</sup> surface expression of the full-length human MOG protein (usually  $\alpha$ -1 isoform, 218 aminoacids) expressed typically on human embryonic kidney (HEK293) cells<sup>7</sup> is used to detect pathogenic anti-MOG antibodies accurately. The immunopathology in MOGAD is summarised in the figure and the panel. Their titres are higher during the acute attack in young children than in adolescents or adults<sup>32</sup> but more likely to become negative after the attack.<sup>16</sup> Timing of testing is important as antibody titres fluctuate and can decrease over months from presentation, and some patients can subsequently be tested negative.<sup>16</sup> A higher cutoff for seropositivity and use of specific secondary antibodies to IgG1 or IgG-Fc $\gamma$ <sup>47</sup> increases specificity (ranging from 99.6% to 100%).<sup>48</sup> The use of anti-IgG (heavy and light chain) secondary antibodies is a matter of debate. It was previously shown that using IgG (heavy and light chain) secondary antibodies could cross react with anti-MOG-IgM, which can be found in healthy controls.<sup>47</sup> However, two studies showed that IgG (heavy and light chain), IgG1, and IgG-Fc $\gamma$  antibodies were similar, and no IgM binding was observed.<sup>49,50</sup> These discrepancies could be due to differences in assay methods. Of note, the sensitivities and specificities reported in all these studies<sup>15,16,47–51</sup> were evaluated in the research setting, and applicability remains to be evaluated in the clinical context. In a recent large multicentre comparative study, anti-MOG antibody cell-based assays showed excellent agreement with each other for high positive and negative samples, but low positive or borderline samples were more frequently discordant.<sup>51</sup> Such titres represent an undefined group of patients and are likely to affect the sensitivity and specificity of the results across all anti-MOG antibody testing laboratories. Each credited laboratory uses a specific cut off for positivity. As with any test, low positive or borderline results are more frequently discordant and should be evaluated as such.

Anti-MOG antibodies are now rarely found in patients with typical multiple sclerosis using cell-based assays. Only one (0.4%) of 244 patients with multiple sclerosis was found to be anti-MOG antibody positive by live-cell-based assay in a multicentre study.<sup>52</sup> Accordingly, two cross-sectional studies reported no detection of anti-MOG antibodies in 200 patients with progressive multiple sclerosis<sup>53</sup> and in two (<1%) of 685 patients with relapsing or progressive multiple sclerosis from two tertiary centres.<sup>11</sup> It is exceptionally rare for any patient to have serum antibodies to both MOG and AQP4.<sup>8,42</sup> Patients who are anti-MOG antibody positive with clinical and paraclinical features discordant or



**Figure: Proposed model for immunopathology of anti-MOG antibody-associated disease and potential treatment strategies**

(A) The trigger for anti-MOG antibody production is unknown, but the autoimmune induction is thought to occur in the peripheral immune system. Although post-infection autoimmunity is a probable trigger, no disease-specific pathogens have been identified. Potential mechanisms for post-infectious autoimmunity, either in isolation or in combination, include molecular mimicry, bystander activation, epitope spreading, B-cell receptor mediated co-capture of antigens, and polyclonal activation of B cells. (B) In addition to anti-MOG antibodies and anti-MOG antibody-producing cells (B cells<sup>58</sup> and plasma cells), antigen-specific T follicular helper cells are also probably involved. As human anti-MOG antibodies are mainly of the IgG1 phenotype, T follicular helper cells are required for differentiation of B cells into plasma cells that produce MOG antibodies. (C) B cells, plasma cells, and autoantibodies have to cross the blood-brain barrier to interact with their autoantigen, and mediate their pathogenic effects. Anti-MOG antibodies might enter the CNS when the blood-brain barrier is damaged after binding to Fc receptors and release from endothelial cells. (D) Once in the CNS, anti-MOG antibodies presumably bind MOG (dark blue circles) expressed on myelin (yellow ovals) where they lead to myelin injury (red flash) and subsequent demyelination.<sup>56,57</sup> In parallel, anti-MOG antibodies and plasma cells might also enhance activation of cognate MOG-specific CD4+ T cells or myelin basic protein-specific T effector cells and macrophages in the CNS.<sup>59</sup> Indeed, there is an increase of proinflammatory cytokines (IL-6, IL-17, G-CSF, and TNF $\alpha$ ) as well as B cell cytokines and chemokines (BAFF, APRIL, CXCL13 and CCL19) in the CSF of patients with anti-MOG antibody-associated disease, compared with CSF from healthy controls.<sup>56</sup> MOG=myelin-oligodendrocyte glycoprotein. MG-CSF=granulocyte colony stimulating factor. TNF=tumour necrosis factor. IL=interleukin. BAFF=B cell activating factor. APRIL=a proliferation inducing ligand.

uncommon for MOGAD must be closely monitored to determine the positive predictive value of this antibody for clinical management. This is particularly relevant in adults with suspected multiple sclerosis, in whom testing of all patients with suspected demyelinating disease would result in many borderline results and probably false positives. With the absence of established criteria for MOGAD, diagnosis in antibody-positive patients with atypical presentation rests on the rigour of the test method and the expertise of the clinician.

One half of patients with MOGAD present with pleocytosis (predominantly lymphocytes and monocytes) with cell numbers that tend to be higher than in multiple sclerosis.<sup>54,55</sup> Severity of pleocytosis correlates more strongly with the rostral extent of lesions in people with acute disseminated encephalomyelitis or longitudinally extensive transverse myelitis than it does in people with optic neuritis.<sup>8</sup> Oligoclonal bands and a positive IgG index are found in less than 15% of people with MOGAD, mainly during attacks.<sup>54,55</sup> Similar to patients with AQP4-NMOSD, CSF cytokine profile is elevated during an acute

London, UK (Prof A Petzold); National Institute for Health Research Biomedical Research Centre at Moorfields Eye Hospital and University College London Institute of Ophthalmology, London, UK (Prof A Petzold); Department of Neurology and Laboratory Medicine and Pathology, and Center for Multiple Sclerosis and Autoimmune Neurology, Mayo Clinic, Rochester, MN, USA (Prof S Pittock MD); Clinical Department of Neurology, Medical University of Innsbruck, Innsbruck, Austria (Prof M Reindl PhD); Brain Institute of Rio Grande do Sul and School of Medicine, Pontifical Catholic University of Rio Grande do Sul, Porto Alegre, Brazil (Prof D K Sato MD); University of Warmia and Mazury, Olsztyn, Poland

(Prof K Selmaj MD); Center of Neurology, Łódź, Poland (Prof K Selmaj); Istanbul University-Cerrahpasa, Cerrahpasa School of Medicine, Department of Neurology, Istanbul, Turkey (Prof A Siva MD); Sorbonne Université, Paris Brain Institute, ICM, CNRS, Inserm, and Saint Antoine Hospital, APHP, Paris, France (Prof B Stankoff MD); Division of Neurology, Department of Medicine, University of British Columbia, Vancouver, BC, Canada (Prof A Traboulsee MD); Department of Neurology, University of California San Francisco, San Francisco, CA, USA (Prof E Waubant MD); Department of Neurology and Center for Multiple Sclerosis and Autoimmune Neurology, Mayo Clinic, Rochester, MN, USA (Prof B Weinschenker MD); Department of Neurology, Klinikum rechts der Isar, Technische Universität München, Munich, Germany and Munich Cluster for Systems Neurology, Munich, Germany (Prof B Hemmer)

Correspondence to: Prof Romain Marignier, Service de neurologie, Sclérose en Plaques, Pathologies de la Myéline et Neuro-inflammation, Hôpital Neurologique Pierre Wertheimer, 69677 Bron, France  
romain.margnier@chu-lyon.fr

See Online for appendix

**Panel: Proposed immunopathology of myelin-oligodendrocyte glycoprotein (MOG)-antibody associated disease**

- Human anti-MOG antibodies are typically of the IgG1 isotype<sup>42</sup>
- The hypothesis of their pathogenic potency was derived from a monoclonal mouse antibody against MOG<sup>93</sup>
- The transfer of this monoclonal antibody to rodents that already have complement-dependent experimental autoimmune encephalomyelitis enhances demyelination<sup>94</sup>
- Studies looking at the effect of anti-MOG antibodies both *in-vivo* and *in-vitro* reveal primary demyelination<sup>95</sup> with loss of the microtubule cytoskeleton in oligodendrocytes, resulting in altered axonal expression of proteins<sup>96</sup>
- The study of presence of CD4<sup>+</sup> T cells in lesions from patients with anti-MOG antibody-associated disease, and data from rat models, suggest that T cells are important in pathogenesis<sup>10, 97</sup>
- MOG-specific B cells have been identified in the peripheral blood from patients with anti-MOG antibody-associated disease, defined by the presence of anti-MOG antibodies in the serum<sup>98</sup>

attack compared with that in patients with multiple sclerosis.<sup>56</sup> Finally, the usefulness of anti-MOG antibody detection in the CSF is not yet fully evaluated. When paired samples are analysed, there is a good concordance between serostatus and CSF status (ie, most CSF-positive patients are seropositive), but not all seropositive patients are CSF-positive, and only a small proportion are seronegative and CSF-positive.<sup>57</sup>

**Imaging biomarkers  
Brain and spinal cord MRI**

Brain MRI in MOGAD can be abnormal in more than 50% of patients, regardless of the clinical presentation.<sup>8</sup> In general, brain lesions are more widespread in children than in adults, reflecting a higher disease burden. In addition to the deep white and grey matter lesions found in acute disseminated encephalomyelitis-like presentations, brainstem lesions are found in up to 40% of patients with MOGAD, frequently involving the pons and middle cerebellar peduncles.<sup>9, 58-60</sup> Interestingly, in a discriminant analysis using only routine clinical scans obtained on different MRI machines, anti-MOG and anti-AQP4 antibody related diseases could not be distinguished, but displayed different imaging characteristics from multiple sclerosis:<sup>58</sup> lesions were poorly demarcated, fewer in number, and so-called Dawson fingers or lesions adjacent to the body of lateral ventricles were less frequent.<sup>58, 61</sup> Other studies have suggested that the involvement of cerebellum, brainstem, or both as a part of a multifocal CNS episode is more likely to indicate the presence of anti-MOG antibodies when compared

with multiple sclerosis, but not with anti-AQP4-positive patients.<sup>62</sup> Dramatic lesion resolution on MRI, sometimes within a month of presentation, is not rare in MOGAD.<sup>59</sup> Patients with MOGAD are less likely to develop clinically silent MRI lesions than are patients with multiple sclerosis.<sup>63</sup>

Although initially thought to be associated predominantly with white matter disease, both adults<sup>64, 65</sup> and children<sup>24, 66, 67</sup> with MOGAD can experience cortical encephalitis and seizures. Brain MRI in these patients can be normal or have reversible cortical changes occasionally with leptomeningeal enhancement.<sup>64</sup> Reports of isolated seizures (with normal brain MRI) during the first episode of what later turned out to be MOGAD in children<sup>66</sup> and reports of aseptic meningoencephalitis and pseudotumour cerebri-like presentations<sup>68</sup> highlight that normal conventional imaging should not preclude the diagnosis of MOGAD and that contrast-enhanced scans can increase the diagnostic yield in symptomatic patients.<sup>64</sup>

Spinal cord MRI findings in MOGAD such as the presence of longitudinally extensive T2 lesions, spanning at least three vertebral segments on sagittal sequences, or the hyperintensity of grey matter on axial sequences (longitudinally extensive transverse myelitis), can resemble those commonly seen in AQP4-NMOSD.<sup>69</sup> MRI features suggesting a diagnosis of MOGAD rather than AQP4-NMOSD or multiple sclerosis are involvement of the conus medullaris, abnormality confined to grey matter (sagittal line and axial H sign) and nerve roots, and scarcity of or minimal gadolinium enhancement.<sup>69</sup> Occasionally, large lesions might be associated with mild clinical impairment, a clinical-radiological paradox, particularly in children.<sup>35</sup>

MRI of the optic nerves can show extensive T2 hyperintensity and T1 gadolinium enhancement that predominates in the anterior portion of the nerve. These features together with severe swelling of the optic nerve head with or without haemorrhage on fundoscopy can help differentiate MOGAD from episodes of optic neuritis in AQP4 NMOSD and multiple sclerosis. Perineural oedema is another radiological finding in up to half of patients with MOGAD with optic neuritis.<sup>70-72</sup>

**Optical coherence tomography**

Patients usually display a thickening of the peripapillary retinal nerve fibre layer, probably due to optic disc swelling during the acute phase of an optic neuritis attack.<sup>73</sup> Subsequently, the peripapillary retinal nerve fibre layer progressively thins, which is greater in the temporal quadrants. Although findings are still inconsistent, on average, optic neuritis associated with anti-MOG antibodies causes less retinal damage than optic neuritis associated with anti-AQP4 antibodies.<sup>74</sup> In affected eyes, longitudinal optical coherence tomography has found a decrease of the peripapillary retinal nerve fibre layer but not of the combined ganglion cell and inner plexiform

layer in the absence of new clinical attacks,<sup>73</sup> in contrast to the reduction of both layers observed in optic neuritis associated with anti-AQP4 antibodies or multiple sclerosis over time.<sup>74,75</sup> In non-affected eyes, subclinical neuroaxonal retinal damage has been found with a decrease in thickness of the ganglion cell and inner plexiform layer.<sup>74</sup> Conflicting results have been reported regarding the peripapillary retinal nerve fibre layer in this subgroup of patients with non-affected eyes.<sup>73,76</sup> Subclinical chiasmal or optic nerve inflammation are the most probable explanation. Similar to the MRI paradox, a clinical-radiological discordance has also been observed with optical coherence tomography, in patients with MOGAD whom preserved visual acuity despite severe atrophy of the retinal nerve fibre layer<sup>77</sup> compared with optic neuritis in patients with multiple sclerosis or AQP4-NMOSD, in which retinal nerve fibre layer thickness and visual acuity frequently correlate.<sup>78–80</sup>

## Treatment

### Attack treatment

There are currently no randomised control trials or evidence-based guidelines for the acute treatment of MOGAD relapses. There is no evidence that anti-MOG antibody positivity should influence acute attack treatment and most neurologists treat these patients according to the demyelinating phenotypes. Importantly, in most circumstances, anti-MOG antibody results are not available within the first few days of acute presentation, and thus do not guide immediate therapies.

Observational studies show that patients with MOGAD are highly sensitive to corticosteroids and can achieve complete and dramatic symptom remission after a short course of intravenous steroids.<sup>26,33,63,81</sup> First line immunotherapy therefore consists of intravenous methylprednisolone (30 mg/kg per day or 1 g per day, for 3–5 days). Treatment escalation is warranted for patients who do not improve after intravenous methylprednisolone or individuals with a severe attack such as complete loss of vision, paralysis, or severe encephalopathy requiring admission to intensive care. In the absence of evidence directly related to MOGAD, the treatment algorithm proposed for CNS demyelination<sup>18</sup> is followed in most expert centres, adapted to local clinical practice or age group. Escalation therapies include plasma exchange (five exchanges on alternative days), immunoadsorption, intravenous immunoglobulins (total of 2 g/kg over 2 or 5 days), or plasma exchange followed by intravenous immunoglobulins.<sup>18</sup> As is the case in AQP4-NMOSD,<sup>82</sup> we anticipate that time to initiation of acute treatment is a predictor of long-term outcome.

The decision for how long and whether to wean the patient from corticosteroids is debated. The choice depends on the severity of the attack, the risk of flare-up if weaning from steroids is too early, and timing and mode of action of the chosen relapse treatment and maintenance therapies. Classically, in adults with MOGAD, some centres

proposed the use of 1 mg/kg per day for 3 months and then progressive tapering over the next 3 months.<sup>63</sup> In a study of 59 patients with MOGAD, of the 146 episodes treated with oral prednisolone taper, most of the 103 subsequent episodes occurred towards the end of the taper or shortly after prednisone cessation.<sup>63</sup> For children (<16 years), the prolonged use of oral corticosteroids is also debated. Some paediatricians among the authors of this Personal View apply a protocol similar to the one used for adults, with 3–6 months of oral steroids (akin to protocols used in rheumatological conditions); other paediatricians among the authors alternatively think that the steroids course should be less than 4 weeks to avoid side-effects and propose use of intravenous immunoglobulins for 3 to 6 months.

### Chronic treatment for relapse prevention

The accumulation of disability in patients with antibody-mediated diseases, such as MOGAD, is thought to be primarily relapse related. Because of the risk of disability due to incomplete relapse recovery, identifying patients at risk for relapse, and treating those with relapses, is the focus of current management. The clinical differentiation between true relapse, disease rebound (during steroid wean or shortly after discontinuation of steroids), and pseudo-relapses secondary to intercurrent infection illness is challenging. Clinical history and examination, preferably in specialist centres, are important when making treatment decisions.

Currently there are no predictors of relapse risk and long-term outcome. Because around 70% of paediatric patients with MOGAD will have a monophasic outcome,<sup>16</sup> the decision to initiate chronic immunosuppression in paediatric patients is more controversial than in adults. Currently, with the absence of natural history studies and the known infectious risks of current immunosuppressive agents, most clinicians would start treatment only after a second event. The decision regarding continuous immunotherapy for relapse prevention is typically influenced by several factors: response to treatment of the initial attack; severity of the initial attack; risk of short-term disability (associated with the first episode or accumulation of episodes); risk of short-term and long-term immunosuppression; and age.

No clinical trials have been done for patients with MOGAD and the current literature reports real-world clinical data, which are not optimal for evaluation of treatment efficacy. Data from the six largest retrospective studies on treatment of relapsing MOGAD<sup>37,63,81,83–85</sup> revealed that, at a median of 9–16 months after the start of treatment, the number of relapse free patients was 20 (69%) of 29 patients on intravenous immunoglobulin monotherapy, 30 (47%) of 63 on mycophenolate mofetil, 21 (39%) of 55 on azathioprine, and 47 (50%) of 94 on rituximab. Of note, although anti-CD20 therapy seems to show some effect, it appears to be less efficacious than in AQP4-NMOSD.<sup>86</sup> In AQP4-NMOSD,

relapses mostly occur when the biological effect of rituximab decreases, whereas patients with MOGAD can relapse despite absent B cells.

A human being cannot be alive without B cells.<sup>86,87</sup> Importantly, time to treatment efficacy is highly variable between different immunotherapies, and needs to be taken into account.

First-line injectable multiple sclerosis treatments (interferon-beta and glatiramer acetate) were shown to be ineffective in preventing relapses in both adults<sup>85</sup> and children<sup>37</sup> with relapsing MOGAD, with no change in annual relapse rate. Although conceptually the use of natalizumab might prevent autoreactive T cells from accessing the brain, in case reports of natalizumab use in six patients with suspected multiple sclerosis but finally diagnosed with MOGAD, severe relapses were reported in five patients.<sup>37,81</sup> There are only anecdotal reports for use of alemtuzumab, dimethyl fumarate, and fingolimod, precluding judgment of treatment efficacy.

### Conclusions and future directions

The keys to improving outcomes in MOGAD are (1) making early diagnosis based on accurate and reproducible detection of anti-MOG antibodies, (2) improving understanding of the disease mechanisms that lead to relapses and disability accumulation, and (3) establishing treatment protocols. There are currently no formal criteria for the diagnosis of MOGAD. Once established and validated, these should improve time to diagnosis and diagnostic accuracy criteria.

In view of the phenotypical heterogeneity of MOGAD, a key question is whether patients with anti-MOG antibodies presenting with NMOSD, acute disseminated encephalomyelitis, or cortical encephalitis might have different pathobiology driving their disease and should therefore be treated differently. To provide further evidence on the mechanisms involved in MOGAD, it is essential to improve our *in-vivo* and *in-vitro* models. Human-derived oligodendrocyte cultures, rodent models expressing humanised MOG, or animal models with MOG proteins that have a higher homology to human MOG than rodents (eg, rhesus monkeys) will provide a better basis to investigate the pathogenic mechanisms. The methodological challenge of measuring antigen specific CD4+ T-cells and B-cells, which are most likely present in the blood of patients with MOGAD at low frequency, are big obstacles that will have to be overcome to address frequency and phenotype of these cells.<sup>88,89</sup> These studies are important to better understand the mechanisms behind the development of an autoimmune response to MOG and might pave the way for antigen specific immune therapies.

With the rarity of the condition, multicentre international studies evaluating initial therapy and intensified therapies are required to determine their safety and efficacy. One approach would be to standardise treatment

### Search strategy and selection criteria

The reference list for this Personal View was based on discussions at the 2-day the European Committee for Treatment and Research in Multiple Sclerosis workshop March 7–8, 2019, and included topics and references discussed in the workshop meetings. These topics were selected by the authors as key priorities in the field of myelin-oligodendrocyte glycoprotein antibody-associated disease. Additionally, we searched PubMed for articles published in English between Jan 1, 1975, and March 1, 2021, using the search terms “myelin oligodendrocyte glycoprotein”, “neuromyelitis optica spectrum disorders”, “acute disseminated encephalomyelitis”, “optic neuritis”, “transverse myelitis”, OR “demyelinating diseases” combined with “MOG” OR “autoantibodies”. We prioritised articles published between 2016 and 2021, a period that corresponds broadly with that in which recombinant antigens expressed on cells (cell-based assays) have been used for myelin-oligodendrocyte glycoprotein IgG testing. We included older references only if they were seminal to the field. We excluded single case reports and data published only in abstract form, and reviewed the bibliographies of included articles for additional references.

protocols across centres, similar to the approach used in oncology. Alternatively, the use of heterogeneous treatment protocols across centres might be a method for capturing real world data, without indication bias, as recently done in a study comparing clinical outcomes of escalation versus early intensive disease-modifying therapy in patients with multiple sclerosis.<sup>90</sup> Repurposing of medications tested for other antibody-mediated conditions with similar pathological mechanism might be explored while specific drugs are developed for MOGAD. Use of data from the randomised control trials for NMOSD and subanalysis of the treatment response in patients with anti-MOG antibodies (some were included in MNOSD trials as patients seronegative for AQP4 antibodies)<sup>91,92</sup> would be a quick approach to evaluate the efficacy of anti-interleukin-6 receptor antibodies and anti-CD19 antibodies. However, the numbers of patients are likely to be small and the trials were not powered for these analyses. Preliminary results from a phase 2 trial of rozanolixizumab (anti-FcRn) showing improvements in functional outcome measures in patients with myasthenia gravis and anti-acetylcholine receptor antibodies might also prove beneficial in MOGAD, as these conditions share similarities in terms of immunopathology.<sup>100</sup> Finally, in anticipating the launch of a randomised control trial in MOGAD, there is an urgent need to identify disease-specific biomarkers of outcomes and treatment response.

### Contributors

RM, YH, AC-C, TD, SV, BH, and A-KP contributed to study concept and design, acquisition of data, analysis and interpretation, writing. BW, EW, HJK, IK, HL, M-IL, CL, EM, JP, FP, AP, SP, MR, DKS, PWS, AT, MT,

BS, AS, KS, AJ, KF, JDS, KD, OC, TC, MC, FB, JB, BB, NA, M-PA, HA, and OA contributed to critical revision of the manuscript. EW, AJ, KF, JDS, KD, OC, TC, MC, FB, JB, BB, NA, M-PA, HA, OA, BW, PW, AT, MT, BS, AS, KS, DKS, MR, SP, AP, FP, JP, EM, CL, M-IL, HL, IK, HJK contributed to acquisition of data.

#### Declaration of interests

RM reports personal fees from Viela Bio, Roche, and UCB; and non-financial support from Viela Bio, Merck, Biogen, and Roche, outside the submitted work. AC-C reports funding from the Instituto de Salud Carlos III (Spain) JR19/00007. A-KP reports grants from the Swiss National Science Foundation, the European Research Council, the National Multiple Sclerosis Society, the ProPatient Foundation, the Goldschmidt-Jacobson-Foundation, and intramural Funding from the University of Basel and personal fees (used for research) from Biogen. OA reports grants from German Research Foundation, German Ministry of Education and Research, Roche, Novartis, and Biogen; and personal fees from Alexion, Almirall, Biogen, Merck, Novartis, Roche, Sanofi, Teva, and Viela Bio, outside the submitted work. M-PA reports grants Merck, Biogen, Sanofi Genzyme, from Teva, Roche, and Novartis; and person fees from Merck, Biogen, Sanofi Genzyme, from Teva, Roche, and Novartis outside the submitted work. BB reports personal fees from Novartis, outside the submitted work. JB reports personal fees from Roche, Genentech, Viela Bio, Chugai Pharm, Alexion, Novartis, Genzyme, Teva Neuroscience, EMD Serono, Frequency Therapeutics, Equillum, Clene Nanoscience, Mitsubishi-Tanabe, and Reistone Bio; grants from Novartis, EMD Serono, National Institutes of Health, Guthy-Jackson Charitable Foundation, and National Multiple Sclerosis Foundation, outside the submitted work; and has a patent Aquaporin-4, issued. FB reports grants from the Australian National Health Research Medical Council and the University of Sydney Research Excellence Initiative; personal fees from Biogen and Merck, outside the submitted work. TC reports consulting fees from Biogen Idec, Novartis, Sanofi, Bayer, Celgene, and Genentech; grants from Novartis, Octave Bioscience, EMD Serono, and Verily Life Sciences; all outside the submitted work. OC reports grants from Spinal Cord Research Foundation, Rosetrees Trust, Progressive Multiple Sclerosis Alliance, Bioclinica and GeNeuro, EU-H2020, UK Multiple Sclerosis Society, National Multiple Sclerosis Society, National Institute for Health Research University College London Hospitals Biomedical Research Centre, and National Institute for Health Research Research Professorship; and serves as a consultant for Merck, Novartis, and Roche; and receives an honorarium from the American Academy of Neurology as Associate Editor of Neurology. KD reports personal fees from Novartis, Biogen, Roche, and Merck; and non-financial support from Novartis, outside the submitted work. KF reports grants from Ministry of Education, Science and Technology of Japan, and Ministry of Health, Welfare and Labor of Japan, during the conduct of the study; personal fees from Chugai/Roche, Alexion, Viela Bio, AsahiKasei Medical, Mitsubishi Tanabe, Biogen/Eisai, Novartis, Teijin, Bayer, Ono, Nihon Pharmaceutical, and Takeda, outside the submitted work; and personal fees from UCB during the conduct of the study. HJK reports grants from National Research Foundation of Korea, Aprilbio; personal fees from Alexion, Aprilbio, Celltrion, Eisai, HanAll BioPharma, Merck Serono, Novartis, Sanofi Genzyme, Teva-Handok, and Viela Bio. M-IL is funded by the UK National Health Service National Specialised Commissioning Group for Neuromyelitis optica and the UK NIHR Oxford Biomedical Research Centre; has been awarded research grants from The Myaware and University of Oxford; received speaker honoraria or travel grants from Biogen Idec, Novartis, and the Guthy-Jackson Charitable Foundation; and serves on scientific or educational advisory boards for UCB, Argenx, and Viela Bio. MC reports personal fees from Biogen, Merck, Sanofi, Novartis, and Roche; and non-financial support from Merck, Sanofi, and Roche, outside the submitted work. IK reports personal fees from Biogen, Novartis, Merck, Sanofi Genzyme, Roche, Mylan, Alexion, Celgene, Chugai, and IQVIA; and grants from Chugai, outside the submitted work. HL reports personal fees from Biogen, Merck, Roche, Novartis, Sanofi Aventis, and MedDay, outside the submitted work. EM reports personal fees from Roche, Novartis, Sanofi, Bioeq, Merck, and Biogen; and grants from Sanofi, Merck, and Novartis, outside the submitted work. JP reports grants from Merck Serono, Chugai, MedImmune, Alexion, and ABIDE; personal fees from Merck Serono, Teva, Chugai, MedImmune, Alexion, Novartis, Roche,

ABIDE, MedDay, ARGENX, Mitsubishi, UCB, and Viela Bio, outside the submitted work; and has a patent Isis: Diagnosing Multiple Sclerosis, issued, and a patent Know-how from the Numares Collaboration, pending. FP receives honoraria for lecturing, and travel expenses for attending meetings from Guthy-Jackson Foundation, Bayer, Biogen, Merck Serono, Sanofi Genzyme, Novartis, Alexion, Viela Bio, Roche, UCB, Mitsubishi Tanabe, and Celgene; and research funding from the German Ministry for Education and Research, Deutsche Forschungsgemeinschaft, Einstein Foundation, Guthy-Jackson Charitable Foundation, EU FP7 Framework Program, Biogen, Genzyme, Merck Serono, Novartis, Bayer, Alexion, Roche, Parexel and Almirall. AP reports personal fees from Novartis, Heidelberg Engineering, and Zeiss; and grants from Novartis, outside the submitted work; and is part of the steering committee of the OCTIMS study which is sponsored by Novartis and the ANGI network which is sponsored by ZEISS (he has not received honoraria for these activities). AP is supported by the National Institute for Health Research, Biomedical Research Centre based at Moorfields Eye Hospital National Health Service Foundation Trust, and University College London Institute of Ophthalmology. The views expressed are those of the authors and not necessarily those of the NHS, the NIHR, or the UK Department of Health. SP reports grants from Grifols, NIH, Guthy-Jackson Charitable Foundation, Autoimmune Encephalitis Alliance, MedImmune, UCB, and Alexion Pharmaceuticals, outside the submitted work; and has a patent (Patent# 8,889,102, Application#12-678350) Neuromyelitis Optica Autoantibodies as a Marker for Neoplasia, issued, a patent (Patent# 9 891 219B2, Application#12-573942) Methods for Treating Neuromyelitis Optica by Administration of Eculizumab to an individual that is Aquaporin-4 (AQP4)-IgG Autoantibody positive, issued, a patent GFAP-IgG, pending, a patent Septin-5-IgG, pending, a patent MAP1B-IgG, pending, a patent Kelch-like protein 11, pending, and a patent PDE10A, pending. MR reports grants from Euroimmun and Roche, during the conduct of the study; and The University Hospital and Medical University of Innsbruck (Austria; employer of MR) receives payments for antibody assays (MOG, AQP4, and other autoantibodies). DKS reports grants from Conselho Nacional de Desenvolvimento Científico e Tecnológico, Fundação de Amparo à Pesquisa do Estado do Rio Grande do Sul, TEVA, and Merck; and personal fees from TEVA, Merck, Biogen, Roche, and Viela Bio, outside the submitted work. KS reports personal fees from Biogen, Novartis, Merck, Roche, Celgene, and TG Therapeutics; and grants from Merck and Roche, outside the submitted work. AS reports personal fees from F Hoffmann-La Roche, Sanofi-Genzyme, Novartis, Merck-Serono, Teva, and Biogen Idec/Gen Pharma of Turkey; and non-financial support from F Hoffmann-La Roche and Sanofi-Genzyme, outside the submitted work. BS has received research grants from Sanofi-Genzyme, Roche, and Merck-Serono, and personal fees for lectures from Sanofi-Genzyme, Merck-Serono, Teva, Biogen and Novartis. MT reports personal fees from Almirall, Bayer Schering Pharma, Biogen-Idec, Genzyme, Merck-Serono, Novartis, Roche, Sanofi-Aventis, Viela Bio, and Teva Pharmaceuticals; and grants from Biogen-Idec and Genzyme, outside the submitted work. AT reports grants from Roche and personal fees from Roche, Sanofi Genzyme, Novartis, EMD Serono, Teva, and Biogen, outside the submitted work. PW reports personal fees from Alexion, F Hoffmann La-Roche, and BC Neuroimmunology, outside the submitted work; and has a patent Antibodies in Autoimmune Neurology, with royalties paid. EW reports personal fees from DBV, Jazz Pharma, and Emerald, outside the submitted work. BW reports personal fees from RSR, Oxford University, Hospices Civil de Lyon, and MVZ Labor PD Dr Volkmann und Kollegen; personal fees from Viela Bio, Alexion, Roche Group (includes Genentech and Chugai), Mitsubishi Tanabe, and Roivant, outside the submitted work; and has a patent NMO-IgG (AQP4-IgG) for diagnosis of NMOSD, with royalties paid. TD reports grants from Novartis, Biogen, and Roche; and financial compensation to his institution for activities on advisory boards, steering committees, or data safety monitoring boards from Alexion, Actelion, Novartis, Merck, Biogen, Genzyme, GeNeuro, Mitsubishi Pharma, Roche, Celgene, and MedDay. TD's wife is an employee of Novartis and holds stock options of Novartis. SV reports grants from Biogen, MedDay, Merck-Serono, Novartis, Roche, and Sanofi-Genzyme; personal fees from Biogen, Celgene, MedDay, Merck-Serono, Novartis, Roche, Sanofi-Genzyme, and Teva; and non-financial support from Biogen, MedDay, Merck-Serono, Novartis,



Roche, and Sanofi-Genzyme, outside the submitted work. BH reports personal fees from Desitin, Novartis, Allergy Care, and TG Therapeutics, outside the submitted work. The other authors declare no competing interests.

#### Acknowledgments

The workshop was sponsored by European Committee for Treatment and Research in Multiple Sclerosis. We thank Ines Brunkow for technical assistance in preparing and organising the workshop. We dedicate this report to our dear colleague and friend Rogier Hintzen, who sadly passed away shortly after the workshop.

#### References

- Johns TG, Bernard CC. The structure and function of myelin oligodendrocyte glycoprotein. *J Neurochem* 1999; **72**: 1–9.
- Reindl M, Di Pauli F, Rostásy K, Berger T. The spectrum of MOG autoantibody-associated demyelinating diseases. *Nat Rev Neurol* 2013; **9**: 455–61.
- Delarasse C, Daubas P, Mars LT, et al. Myelin/oligodendrocyte glycoprotein-deficient (MOG-deficient) mice reveal lack of immune tolerance to MOG in wild-type mice. *J Clin Invest* 2003; **112**: 544–53.
- Hemmer B, Archelos JJ, Hartung HP. New concepts in the immunopathogenesis of multiple sclerosis. *Nat Rev Neurosci* 2002; **3**: 291–301.
- Lassmann H, Bradl M. Multiple sclerosis: experimental models and reality. *Acta Neuropathol* 2017; **133**: 223–44.
- Iglesias A, Bauer J, Litznerburger T, Schubart A, Linington C. T- and B-cell responses to myelin oligodendrocyte glycoprotein in experimental autoimmune encephalomyelitis and multiple sclerosis. *Glia* 2001; **36**: 220–34.
- O'Connor KC, McLaughlin KA, De Jager PL, et al. Self-antigen tetramers discriminate between myelin autoantibodies to native or denatured protein. *Nat Med* 2007; **13**: 211–17.
- Cobo-Calvo A, Ruiz A, Maillart E, et al. Clinical spectrum and prognostic value of CNS MOG autoimmunity in adults: The MOGADOR study. *Neurology* 2018; **90**: e1858–69.
- Hacohen Y, Mankad K, Chong WK, et al. Diagnostic algorithm for relapsing acquired demyelinating syndromes in children. *Neurology* 2017; **89**: 269–78.
- Takai Y, Misu T, Kaneko K, et al. Myelin oligodendrocyte glycoprotein antibody-associated disease: an immunopathological study. *Brain* 2020; **143**: 1431–46.
- Cobo-Calvo A, d'Indy H, Ruiz A, et al. Frequency of myelin oligodendrocyte glycoprotein antibody in multiple sclerosis: a multicenter cross-sectional study. *Neurol Neuroimmunol Neuroinflamm* 2019; **7**: e649.
- Kunchok A, Chen JJ, McKeon A, Mills JR, Flanagan EP, Pittock SJ. Coexistence of myelin oligodendrocyte glycoprotein and aquaporin-4 antibodies in adult and pediatric patients. *JAMA Neurol* 2020; **77**: 257–59.
- Hacohen Y, Absoud M, Deiva K, et al. Myelin oligodendrocyte glycoprotein antibodies are associated with a non-MS course in children. *Neurol Neuroimmunol Neuroinflamm* 2015; **2**: e81.
- Ketelslegers IA, Van Pelt DE, Bryde S, et al. Anti-MOG antibodies plead against MS diagnosis in an acquired demyelinating syndromes cohort. *Mult Scler* 2015; **21**: 1513–20.
- Hennes EM, Baumann M, Schanda K, et al. Prognostic relevance of MOG antibodies in children with an acquired demyelinating syndrome. *Neurology* 2017; **89**: 900–08.
- Waters P, Fadda G, Woodhall M, et al. Serial anti-myelin oligodendrocyte glycoprotein antibody analyses and outcomes in children with demyelinating syndromes. *JAMA Neurol* 2020; **77**: 82–93.
- Brilot F, Dale RC, Selter RC, et al. Antibodies to native myelin oligodendrocyte glycoprotein in children with inflammatory demyelinating central nervous system disease. *Ann Neurol* 2009; **66**: 833–42.
- Hacohen Y, Banwell B. Treatment approaches for MOG-Ab-associated demyelination in children. *Curr Treat Options Neurol* 2019; **21**: 2.
- López-Chiriboga AS, Majed M, Fryer J, et al. Association of MOG-IgG serostatus with relapse after acute disseminated encephalomyelitis and proposed diagnostic criteria for MOG-IgG-associated disorders. *JAMA Neurol* 2018; **75**: 1355–63.
- Soelberg K, Jarius S, Skejoe H, et al. A population-based prospective study of optic neuritis. *Mult Scler* 2017; **23**: 1893–901.
- Chen JJ, Tobin WO, Majed M, et al. Prevalence of myelin oligodendrocyte glycoprotein and aquaporin-4-IgG in patients in the optic neuritis treatment trial. *JAMA Ophthalmol* 2018; **136**: 419–22.
- Cobo-Calvo A, Sepúlveda M, Bernard-Valnet R, et al. Antibodies to myelin oligodendrocyte glycoprotein in aquaporin 4 antibody seronegative longitudinally extensive transverse myelitis: clinical and prognostic implications. *Mult Scler* 2016; **22**: 312–19.
- Jitrapaikulsan J, Chen JJ, Flanagan EP, et al. Aquaporin-4 and myelin oligodendrocyte glycoprotein autoantibody status predict outcome of recurrent optic neuritis. *Ophthalmology* 2018; **125**: 1628–37.
- Rossor T, Benetou C, Wright S, et al. Early predictors of epilepsy and subsequent relapse in children with acute disseminated encephalomyelitis. *Mult Scler* 2020; **26**: 333–342.
- Baumann M, Hennes EM, Schanda K, et al. Children with multiphasic disseminated encephalomyelitis and antibodies to the myelin oligodendrocyte glycoprotein (MOG): extending the spectrum of MOG antibody positive diseases. *Mult Scler* 2016; **22**: 1821–29.
- Wong YYM, Hacohen Y, Armangue T, et al. Paediatric acute disseminated encephalomyelitis followed by optic neuritis: disease course, treatment response and outcome. *Eur J Neurol* 2018; **25**: 782–86.
- Rostásy K, Mader S, Hennes EM, et al. Persisting myelin oligodendrocyte glycoprotein antibodies in aquaporin-4 antibody negative pediatric neuromyelitis optica. *Mult Scler* 2013; **19**: 1052–59.
- Duignan S, Wright S, Rossor T, et al. Myelin oligodendrocyte glycoprotein and aquaporin-4 antibodies are highly specific in children with acquired demyelinating syndromes. *Dev Med Child Neurol* 2018; **60**: 958–62.
- Kitley J, Waters P, Woodhall M, et al. Neuromyelitis optica spectrum disorders with aquaporin-4 and myelin-oligodendrocyte glycoprotein antibodies: a comparative study. *JAMA Neurol* 2014; **71**: 276–83.
- Höftberger R, Sepúlveda M, Armangue T, et al. Antibodies to MOG and AQP4 in adults with neuromyelitis optica and suspected limited forms of the disease. *Mult Scler* 2015; **21**: 866–74.
- Sato DK, Callegaro D, Lana-Peixoto MA, et al. Distinction between MOG antibody-positive and AQP4 antibody-positive NMO spectrum disorders. *Neurology* 2014; **82**: 474–81.
- Pröbstel AK, Rudolf G, Dornmair K, et al. Anti-MOG antibodies are present in a subgroup of patients with a neuromyelitis optica phenotype. *J Neuroinflammation* 2015; **12**: 46.
- Jurynczyk M, Messina S, Woodhall MR, et al. Clinical presentation and prognosis in MOG-antibody disease: a UK study. *Brain* 2017; **140**: 3128–38.
- Bruijstens AL, Wong YYM, van Pelt DE, et al. HLA association in MOG-IgG- and AQP4-IgG-related disorders of the CNS in the Dutch population. *Neurol Neuroimmunol Neuroinflamm* 2020; **7**: e702.
- Hacohen Y, Rossor T, Mankad K, et al. 'Leukodystrophy-like' phenotype in children with myelin oligodendrocyte glycoprotein antibody-associated disease. *Dev Med Child Neurol* 2018; **60**: 417–23.
- Fernandez-Carbonell C, Vargas-Lowy D, Musallam A, et al. Clinical and MRI phenotype of children with MOG antibodies. *Mult Scler* 2016; **22**: 174–84.
- Hacohen Y, Wong YY, Lechner C, et al. Disease course and treatment responses in children with relapsing myelin oligodendrocyte glycoprotein antibody-associated disease. *JAMA Neurol* 2018; **75**: 478–87.
- Cobo-Calvo A, Ruiz A, Rollet F, et al. Clinical features and risk of relapse in children and adults with myelin oligodendrocyte glycoprotein antibody-associated disease. *Ann Neurol* 2021; **89**: 30–41.
- Chitnis T, Aen G, Belman A, et al. Improved relapse recovery in paediatric compared to adult multiple sclerosis. *Brain* 2020; **143**: 2733–41.
- Cobo-Calvo A, Ruiz A, D'Indy H, et al. MOG antibody-related disorders: common features and uncommon presentations. *J Neurol* 2017; **264**: 1945–55.
- Jarius S, Ruprecht K, Kleiter I, et al. MOG-IgG in NMO and related disorders: a multicenter study of 50 patients. Part 1: Frequency, syndrome specificity, influence of disease activity, long-term course, association with AQP4-IgG, and origin. *J Neuroinflammation* 2016; **13**: 279.

- 42 Reindl M, Waters P. Myelin oligodendrocyte glycoprotein antibodies in neurological disease. *Nat Rev Neurol* 2019; **15**: 89–102.
- 43 Menge T, Lalive PH, von Büdingen HC, Genain CP. Conformational epitopes of myelin oligodendrocyte glycoprotein are targets of potentially pathogenic antibody responses in multiple sclerosis. *J Neuroinflammation* 2011; **8**: 161.
- 44 Mayer MC, Breithaupt C, Reindl M, et al. Distinction and temporal stability of conformational epitopes on myelin oligodendrocyte glycoprotein recognized by patients with different inflammatory central nervous system diseases. *J Immunol* 2013; **191**: 3594–604.
- 45 Marta CB, Oliver AR, Sweet RA, Pfeiffer SE, Ruddle NH. Pathogenic myelin oligodendrocyte glycoprotein antibodies recognize glycosylated epitopes and perturb oligodendrocyte physiology. *Proc Natl Acad Sci USA* 2005; **102**: 13992–97.
- 46 Gaertner S, de Graaf KL, Greve B, Weissert R. Antibodies against glycosylated native MOG are elevated in patients with multiple sclerosis. *Neurology* 2004; **63**: 2381–83.
- 47 Waters P, Woodhall M, O'Connor KC, et al. MOG cell-based assay detects non-MS patients with inflammatory neurologic disease. *Neurol Neuroimmunol Neuroinflamm* 2015; **2**: e89.
- 48 Waters PJ, Komorowski L, Woodhall M, et al. A multicenter comparison of MOG-IgG cell-based assays. *Neurology* 2019; **92**: e1250–55.
- 49 Tea F, Lopez JA, Ramanathan S, et al. Characterization of the human myelin oligodendrocyte glycoprotein antibody response in demyelination. *Acta Neuropathol Commun* 2019; **7**: 145.
- 50 Kim Y, Hyun JW, Woodhall MR, et al. Refining cell-based assay to detect MOG-IgG in patients with central nervous system inflammatory diseases. *Mult Scler Relat Disord* 2020; **40**: 101939.
- 51 Reindl M, Schanda K, Woodhall M, et al. International multicenter examination of MOG antibody assays. *Neurol Neuroimmunol Neuroinflamm* 2020; **7**: e674.
- 52 Waters P, Reindl M, Saiz A, et al. Multicenter comparison of a diagnostic assay: aquaporin-4 antibodies in neuromyelitis optica. *J Neurol Neurosurg Psychiatry* 2016; **87**: 1005–15.
- 53 Jarius S, Ruprecht K, Stellmann JP, et al. MOG-IgG in primary and secondary chronic progressive multiple sclerosis: a multicenter study of 200 patients and review of the literature. *J Neuroinflammation* 2018; **15**: 88.
- 54 Jarius S, Lechner C, Wendel EM, et al. Cerebrospinal fluid findings in patients with myelin oligodendrocyte glycoprotein (MOG) antibodies. Part 2: results from 108 lumbar punctures in 80 pediatric patients. *J Neuroinflammation* 2020; **17**: 262.
- 55 Jarius S, Pellkofer H, Siebert N, et al. Cerebrospinal fluid findings in patients with myelin oligodendrocyte glycoprotein (MOG) antibodies. Part 1: results from 163 lumbar punctures in 100 adult patients. *J Neuroinflammation* 2020; **17**: 261.
- 56 Kameko K, Sato DK, Nakashima I, et al. CSF cytokine profile in MOG-IgG+ neurological disease is similar to AQP4-IgG+ NMOSD but distinct from MS: a cross-sectional study and potential therapeutic implications. *J Neurol Neurosurg Psychiatry* 2018; **89**: 927–36.
- 57 Mariotto S, Gajofatto A, Batzu L, et al. Relevance of antibodies to myelin oligodendrocyte glycoprotein in CSF of seronegative cases. *Neurology* 2019; **93**: e1867–72.
- 58 Jurynczyk M, Gerales R, Probert F, et al. Distinct brain imaging characteristics of autoantibody-mediated CNS conditions and multiple sclerosis. *Brain* 2017; **140**: 617–27.
- 59 Baumann M, Grams A, Djurdjevic T, et al. MRI of the first event in pediatric acquired demyelinating syndromes with antibodies to myelin oligodendrocyte glycoprotein. *J Neurol* 2018; **265**: 845–55.
- 60 Jurynczyk M, Tackley G, Kong Y, et al. Brain lesion distribution criteria distinguish MS from AQP4-antibody NMOSD and MOG-antibody disease. *J Neurol Neurosurg Psychiatry* 2017; **88**: 132–36.
- 61 Hyun JW, Huh SY, Shin HJ, et al. Evaluation of brain lesion distribution criteria at disease onset in differentiating MS from NMOSD and MOG-IgG-associated encephalomyelitis. *Mult Scler* 2019; **25**: 585–90.
- 62 Banks SA, Morris PP, Chen JJ, et al. Brainstem and cerebellar involvement in MOG-IgG-associated disorder versus aquaporin-4-IgG and MS. *J Neurol Neurosurg Psychiatry* 2020; **92**: 384–90.
- 63 Ramanathan S, Mohammad S, Tantsis E, et al. Clinical course, therapeutic responses and outcomes in relapsing MOG antibody-associated demyelination. *J Neurol Neurosurg Psychiatry* 2018; **89**: 127–37.
- 64 Ogawa R, Nakashima I, Takahashi T, et al. MOG antibody-positive, benign, unilateral, cerebral cortical encephalitis with epilepsy. *Neurol Neuroimmunol Neuroinflamm* 2017; **4**: e322.
- 65 Hamid SHM, Whittam D, Saviour M, et al. Seizures and encephalitis in myelin oligodendrocyte glycoprotein IgG disease vs aquaporin 4 IgG disease. *JAMA Neurol* 2018; **75**: 65–71.
- 66 Ramanathan S, O'grady GL, Malone S, et al. Isolated seizures during the first episode of relapsing myelin oligodendrocyte glycoprotein antibody-associated demyelination in children. *Dev Med Child Neurol* 2019; **61**: 610–14.
- 67 Armangue T, Olivé-Cirera G, Martínez-Hernandez E, et al. Associations of paediatric demyelinating and encephalitic syndromes with myelin oligodendrocyte glycoprotein antibodies: a multicentre observational study. *Lancet Neurol* 2020; **19**: 234–46.
- 68 Narayan RN, Wang C, Sguigna P, Husari K, Greenberg B. Atypical anti-MOG syndrome with aseptic meningoencephalitis and pseudotumor cerebri-like presentations. *Mult Scler Relat Disord* 2019; **27**: 30–33.
- 69 Dubey D, Pittock SJ, Krecke KN, et al. Clinical, Radiologic, and prognostic features of myelitis associated with myelin oligodendrocyte glycoprotein autoantibody. *JAMA Neurol* 2019; **76**: 301–09.
- 70 Liu H, Zhou H, Wang J, et al. The prevalence and prognostic value of myelin oligodendrocyte glycoprotein antibody in adult optic neuritis. *J Neurol Sci* 2019; **396**: 225–31.
- 71 Chen JJ, Flanagan EP, Jitrapaikuljan J, et al. Myelin oligodendrocyte glycoprotein antibody-positive optic neuritis: clinical characteristics, radiologic clues, and outcome. *Am J Ophthalmol* 2018; **195**: 8–15.
- 72 Ramanathan S, Prelog K, Barnes EH, et al. Radiological differentiation of optic neuritis with myelin oligodendrocyte glycoprotein antibodies, aquaporin-4 antibodies, and multiple sclerosis. *Mult Scler* 2016; **22**: 470–82.
- 73 Oertel FC, Outteryck O, Knier B, et al. Optical coherence tomography in myelin-oligodendrocyte-glycoprotein antibody-seropositive patients: a longitudinal study. *J Neuroinflammation* 2019; **16**: 154.
- 74 Oertel FC, Havla J, Roca-Fernández A, et al. Retinal ganglion cell loss in neuromyelitis optica: a longitudinal study. *J Neurol Neurosurg Psychiatry* 2018; **89**: 1259–65.
- 75 Balk LJ, Cruz-Herranz A, Albrecht P, et al. Timing of retinal neuronal and axonal loss in MS: a longitudinal OCT study. *J Neurol* 2016; **263**: 1323–31.
- 76 Narayan RN, McCreary M, Conger D, Wang C, Greenberg BM. Unique characteristics of optical coherence tomography (OCT) results and visual acuity testing in myelin oligodendrocyte glycoprotein (MOG) antibody positive pediatric patients. *Mult Scler Relat Disord* 2019; **28**: 86–90.
- 77 Ciron J, Cobo-Calvo A, Audoin B, et al. Frequency and characteristics of short versus longitudinally extensive myelitis in adults with MOG antibodies: a retrospective multicentric study. *Mult Scler* 2020; **26**: 936–944.
- 78 Martínez-Lapiscina EH, Arnou S, Wilson JA, et al. Retinal thickness measured with optical coherence tomography and risk of disability worsening in multiple sclerosis: a cohort study. *Lancet Neurol* 2016; **15**: 574–84.
- 79 Gabilondo I, Martínez-Lapiscina EH, Fraga-Pumar E, et al. Dynamics of retinal injury after acute optic neuritis. *Ann Neurol* 2015; **77**: 517–28.
- 80 Eyre M, Hameed A, Wright S, et al. Retinal nerve fibre layer thinning is associated with worse visual outcome after optic neuritis in children with a relapsing demyelinating syndrome. *Dev Med Child Neurol* 2018; **60**: 1244–50.
- 81 Jarius S, Ruprecht K, Kleiter I, et al. MOG-IgG in NMO and related disorders: a multicenter study of 50 patients. Part 2: Epidemiology, clinical presentation, radiological and laboratory features, treatment responses, and long-term outcome. *J Neuroinflammation* 2016; **13**: 280.
- 82 Bonnan M, Valentino R, Debeugny S, et al. Short delay to initiate plasma exchange is the strongest predictor of outcome in severe attacks of NMO spectrum disorders. *J Neurol Neurosurg Psychiatry* 2018; **89**: 346–51.
- 83 Zhou J, Lu X, Zhang Y, et al. Follow-up study on Chinese children with relapsing MOG-IgG-associated central nervous system demyelination. *Mult Scler Relat Disord* 2019; **28**: 4–10.

- 84 Chen JJ, Flanagan EP, Bhatti MT, et al. Steroid-sparing maintenance immunotherapy for MOG-IgG associated disorder. *Neurology* 2020; **95**: e111–20.
- 85 Cobo-Calvo A, Sepúlveda M, Rollot F, et al. Evaluation of treatment response in adults with relapsing MOG-Ab-associated disease. *J Neuroinflammation* 2019; **16**: 134.
- 86 Durozard P, Rico A, Boutiere C, et al. Comparison of the response to rituximab between myelin oligodendrocyte glycoprotein and aquaporin-4 antibody diseases. *Ann Neurol* 2020; **87**: 256–66.
- 87 Whittam DH, Cobo-Calvo A, Lopez-Chiriboga AS, et al. Treatment of MOG-IgG-associated disorder with rituximab: an international study of 121 patients. *Mult Scler Relat Disord* 2020; **44**: 102251.
- 88 Saxena S, Lokhande H, Gombolay G, Raheja R, Rooney T, Chitnis T. Identification of TNFAIP3 as relapse biomarker and potential therapeutic target for MOG antibody associated diseases. *Sci Rep* 2020; **10**: 12405.
- 89 Varrin-Doyer M, Shetty A, Spencer CM, et al. MOG transmembrane and cytoplasmic domains contain highly stimulatory T-cell epitopes in MS. *Neurol Neuroimmunol Neuroinflamm* 2014; **1**: e20.
- 90 Harding K, Williams O, Willis M, et al. Clinical outcomes of escalation vs early intensive disease-modifying therapy in patients with multiple sclerosis. *JAMA Neurol* 2019; **76**: 536–41.
- 91 Yamamura T, Kleiter I, Fujihara K, et al. Trial of satralizumab in neuromyelitis optica spectrum Disorder. *N Engl J Med* 2019; **381**: 2114–24.
- 92 Cree BAC, Bennett JL, Kim HJ, et al. Inebilizumab for the treatment of neuromyelitis optica spectrum disorder (N-MOmentum): a double-blind, randomised placebo-controlled phase 2/3 trial. *Lancet* 2019; **394**: 1352–63.
- 93 Linington C, Lassmann H. Antibody responses in chronic relapsing experimental allergic encephalomyelitis: correlation of serum demyelinating activity with antibody titre to the myelin/oligodendrocyte glycoprotein (MOG). *J Neuroimmunol* 1987; **17**: 61–69.
- 94 Peschl P, Schanda K, Zeka B, et al. Human antibodies against the myelin oligodendrocyte glycoprotein can cause complement-dependent demyelination. *J Neuroinflammation* 2017; **14**: 208.
- 95 Saadoun S, Waters P, Owens GP, Bennett JL, Vincent A, Papadopoulos MC. Neuromyelitis optica MOG-IgG causes reversible lesions in mouse brain. *Acta Neuropathol Commun* 2014; **2**: 35.
- 96 Dale RC, Tantsis EM, Merheb V, et al. Antibodies to MOG have a demyelination phenotype and affect oligodendrocyte cytoskeleton. *Neurol Neuroimmunol Neuroinflamm* 2014; **1**: e12.
- 97 Spadaro M, Winklmeier S, Beltrán E, et al. Pathogenicity of human antibodies against myelin oligodendrocyte glycoprotein. *Ann Neurol* 2018; **84**: 315–28.
- 98 Winklmeier S, Schlüter M, Spadaro M, et al. Identification of circulating MOG-specific B cells in patients with MOG antibodies. *Neurol Neuroimmunol Neuroinflamm* 2019; **6**: 625.
- 99 Spadaro M, Gerdes LA, Krumbholz M, et al. Autoantibodies to MOG in a distinct subgroup of adult multiple sclerosis. *Neurol Neuroimmunol Neuroinflamm* 2016; **3**: e257.
- 100 Howard JF Jr, Bril V, Burns TM, et al. Randomized phase 2 study of FcRn antagonist efgartigimod in generalized myasthenia gravis. *Neurology* 2019; **92**: e2661–73.

© 2021 Elsevier Ltd. All rights reserved.