

ARE THE PARIS AGREEMENT EFFORTS EQUALLY SHARED?

Author(s): Adalmir Antonio Marquetti, Gabriel Mendoza Pichardo and Guilherme de Oliveira

Source: *Investigación Económica*, Vol. 78, No. 310 (OCTUBRE-DICIEMBRE DE 2019), pp. 103-136

Published by: Facultad de Economía, Universidad Nacional Autónoma de México (UNAM)

Stable URL: <https://www.jstor.org/stable/10.2307/26796725>

**REFERENCES**

Linked references are available on JSTOR for this article:

[https://www.jstor.org/stable/10.2307/26796725?seq=1&cid=pdf-reference#references\\_tab\\_contents](https://www.jstor.org/stable/10.2307/26796725?seq=1&cid=pdf-reference#references_tab_contents)

You may need to log in to JSTOR to access the linked references.

---

JSTOR is a not-for-profit service that helps scholars, researchers, and students discover, use, and build upon a wide range of content in a trusted digital archive. We use information technology and tools to increase productivity and facilitate new forms of scholarship. For more information about JSTOR, please contact support@jstor.org.

Your use of the JSTOR archive indicates your acceptance of the Terms & Conditions of Use, available at <https://about.jstor.org/terms>



Facultad de Economía, Universidad Nacional Autónoma de México (UNAM) is collaborating with JSTOR to digitize, preserve and extend access to *Investigación Económica*

JSTOR

# ARE THE PARIS AGREEMENT EFFORTS EQUALLY SHARED?

## GDP AND CO<sub>2</sub> PRODUCTION REGULARITIES<sup>1</sup>

*Adalmir Antonio Marquetti*

Department of Economics of the Pontificia Universidade Católica do Rio Grande do Sul (Brazil)

*Gabriel Mendoza Pichardo*

Faculty of Economics of the Universidad Nacional Autónoma de México (Mexico)

Corresponding author: [gamp@unam.mx](mailto:gamp@unam.mx)

*Guilherme de Oliveira*

Department of Economics and International Relations of the Universidade Federal de Santa Catarina (Brazil)

Manuscript received 09 April 2019; final version received 20 August 2019.

### ABSTRACT

This study investigates regularities in the production of GDP and CO<sub>2</sub> emissions for 84 countries between 1980-2014. The empirical strategy is derived from an ecological-economic framework in which both outputs are produced employing capital, energy and labor. Moreover, we propose an expanded version of the Kaya identity, which creates a link between the growth rate of CO<sub>2</sub> emissions and capital accumulation to evaluate the distribution of abatement efforts under

---

<sup>1</sup> We would like to thank Alejandro Álvarez Béjar and Duncan Foley and the participants in the Seminar "Problemas y Perspectivas de la Economía Internacional" at Faculty of Economics, UNAM for very helpful observations on an earlier version of this paper. All remaining errors are ours. This work was supported by the Conselho Nacional de Desenvolvimento Científico e Tecnológico [grant number 307310/2015-9]; and the Programa de Apoyo a Proyectos de Investigación e Innovación Tecnológica (PAPIIT) of the Dirección General de Asuntos del Personal Académico (DGAPA) of the UNAM which provided resources for the research project IN306915 "Patrones de cambio técnico en la etapa del capitalismo global (1980-2014)".

<http://dx.doi.org/10.22201/fe.01851667p.2019.310.71548>

© 2019 Universidad Nacional Autónoma de México, Facultad de Economía. This is an open access article under the CC BY-NC-ND license (<http://creativecommons.org/licenses/by-nc-nd/4.0/>).

IE, 78(310), octubre-diciembre de 2019 | 103 |

the Paris Agreement. By using a new dataset, we found evidence of relative decoupling in developing countries and absolute decoupling in some developed countries. Our findings show that the individual voluntary definition of the emission targets under the Agreement resulted in an unequal distribution of the abatement efforts among developing and developed countries. In the absence of higher energy or environment-saving technical changes, the required reductions in capital accumulation are sharper for developing than developed countries.

**Key words:** Economic growth, carbon dioxide emissions, technical change, Kaya identity, Paris Agreement.

**JEL Classification:** O33, O44, Q57.

¿SE COMPARTEN LOS ESFUERZOS DEL ACUERDO DE PARÍS IGUALMENTE?  
REGULARIDADES DE PRODUCCIÓN DEL PIB Y CO<sub>2</sub>

**RESUMEN**

Este trabajo investiga las regularidades en la producción del PIB y las emisiones de CO<sub>2</sub> en 84 países entre 1980 y 2014. La estrategia empírica deriva de un marco ecológico-económico en el cual los dos bienes se producen utilizando capital, energía y trabajo. Proponemos una versión expandida de la identidad de Kaya que crea un vínculo entre la tasa de crecimiento de las emisiones de CO<sub>2</sub> y la acumulación de capital para evaluar la distribución de los esfuerzos de abatimiento del Acuerdo de París. Mediante el uso de una nueva base de datos, encontramos un desacoplamiento relativo en los países en desarrollo y un desacoplamiento absoluto en algunos países desarrollados. Nuestros hallazgos muestran que la definición individual voluntaria de las metas de emisiones del Acuerdo resulta en una distribución desigual de los esfuerzos de abatimiento entre los países en desarrollo y desarrollados. En ausencia de un mayor cambio técnico ahorrador de energía o del ambiente, las reducciones requeridas en la acumulación de capital son más agudas para los países en desarrollo que para los desarrollados.

**Palabras clave:** crecimiento económico, emisiones de dióxido de carbono, cambio técnico, identidad de Kaya, Acuerdo de París.

**Clasificación JEL:** O33, O44, Q57.

# 1. INTRODUCTION

The management of the adverse impacts of global warming is one of the fundamental challenges facing capitalism over the coming decades. The anthropogenic greenhouse gas (GHG) emission, the major source of global warming, is estimated to have caused approximately 1.0°C of global warming above pre-industrial levels (Intergovernmental Panel on Climate Change, IPCC, 2018).

The Paris Agreement, which 182 countries and the European Union (EU) have ratified, aims to hold the increase in “the global average temperature well below 2°C above pre-industrial levels and pursues efforts to limit the temperature increase to 1.5°C above pre-industrial levels” (United Nations Framework Convention on Climate Change, UNFCCC, 2015, p. 2). Climate scenarios suggest that for limiting temperature below 2.0°C increase, carbon dioxide, CO<sub>2</sub> emissions, the main pollutant, must decline by about 20% from 2010 levels by 2030. For the limited overshoot of 1.5°C increase, CO<sub>2</sub> emissions must decline by about 45% by 2030 (IPCC, 2018).

This context has, at least, two economic aspects. First, consistent policy proposals for reducing global CO<sub>2</sub> emissions need to take a macroeconomic perspective that measures the current cost in terms of Gross Domestic Product (GDP). Second, although all countries of the earth will experience the impact of global warming, the countries may have very different costs and benefits from mitigation and adaptation policies (Foley, 2003). The ecological macroeconomics is moving towards the construction of a theoretical framework and empirical models that examine these issues from an alternative perspective (Rezai, Taylor, and Mechler, 2012; Kemp-Benedict, 2018; Taylor, Rezai, and Foley, 2016).

This paper intends to contribute in this regard. First, we design an empirical strategy derived from an ecological-economic framework in which the GDP and CO<sub>2</sub> emissions are produced employing capital, energy and labor (Brock and Taylor, 2010; Kurz, 2006; Baumgärtner *et al.*, 2001). A nonparametric method, the local polynomial regression, is employed to investigate regularities on technical change and the production of GDP and CO<sub>2</sub> emissions for 84 countries between 1980 and 2014. The country sample is selected from a new data set, the *Extended Penn World Tables v.6.0* (EPWT v.6.0). This new data may shed some

fresh light on discussions of the climate policy literature regarding the principle of differentiated responsibilities and respective capabilities.

Our second contribution is the derivation of an expanded version of the Kaya identity to explore links between the growth rate of CO<sub>2</sub> emissions, capital accumulation and the parameters of technical change, especially movements towards environment-saving techniques (Rezai, Taylor, and Mechler, 2012). This modified Kaya identity is employed to discuss normative issues related to the intended nationally determined contributions (INDCs). The INDC is the greenhouse gas target assumed by each country, representing the national efforts to reduce emissions and adapt to the impacts of global warming. Employing the current trend, we compute the required pace of capital accumulation, energy efficiency and emission intensity to accomplish the emission targets reported on the INDCs. This analysis offers a first look at the distribution of the economic efforts of the Paris Agreement.

The results are presented in line with Kaldor (1961) who in the mid-20<sup>th</sup> century stated that economic theory has to explain the regularities or stylized facts of economic growth. We find evidence of a global relative decoupling from the second half of the 1970s. The developed countries have a low CO<sub>2</sub> emissions growth rate, with some of them presenting evidence of absolute decoupling, while the developing countries with high GDP growth have a high growth rate of CO<sub>2</sub> emissions. The countries with absolute decoupling presented a movement towards environment-saving technical change, with remarkable improvements on the energy-labor ratio and the capital-energy ratio.

The modified Kaya identity suggests that the individual voluntary definition of the emission targets under the Paris Agreement has resulted in an unequal distribution of the future abatement efforts among developing and developed countries. In the absence of energy or environment-saving technical change, sharper reductions in the pace of accumulation in developing countries are required to comply with the individual emission targets.

The paper is organized as follows. Section two presents the ecological-economic framework. Section three presents the methods and data. Section four analyzes the production of both outputs, the techniques of production, and the emission intensity variables for 84 countries between 1980-2014. The patterns of technical change, the evidence of

the decoupling between CO<sub>2</sub> emissions and economic growth and the Paris Agreement targets are explored in subsection 4.1 and 4.2. Finally, section five concludes the paper.

## 2. THE LINK BETWEEN CO<sub>2</sub> EMISSIONS AND ECONOMIC ACTIVITY

This study uses an ecological-economic framework as a theoretical baseline motivation for the empirical strategy. The framework is inspired by contributions in both environmental and ecological macroeconomics that considers the environment as a sink for production waste. This literature investigates the links between economic growth and the environment (Brock and Taylor, 2010; Kurz, 2006; Baumgärtner *et al.*, 2001). More importantly, this framework allows us to employ the Kaya decomposition to investigate the links between economic growth and technical change in GDP and CO<sub>2</sub> emissions.

The economy produces GDP, which we denote by  $X$ , and the carbon dioxide,  $B$ , by using physical capital,  $K$ , energy,  $E$ , and labor,  $N$ . The GDP includes the depreciation,  $D$ , of physical capital and excludes intermediate inputs from production. However, the production of intermediate inputs also generates CO<sub>2</sub> emissions. Physical capital depreciates every year at the rate  $d$ , the total depreciation included in GDP is equal to  $dK$ . The main source of pollution results from the employment of energy generated by oil, coal and other chemicals to produce GDP.

The production process involves the combination of physical capital, energy and labor to produce two outputs and depreciated capital. The central role of energy in the production process is considered. This is an idea widely accepted among ecological economists, but never fully considered by the professional mainstream. The process represented in upper part of Table 1 includes three inputs and two outputs.

A production technique is defined in terms of a labor unit. We divide the levels of inputs and outputs by labor,  $N$ , obtaining the capital-labor ratio,  $k$ , the energy-labor ratio,  $e$ , the GDP-labor ratio or labor productivity,  $x$ , the CO<sub>2</sub> emissions per labor ratio,  $b$ . A technique is defined by the parameters  $k$ ,  $e$ ,  $x$ ,  $b$ , and  $d$ . Table 1 displays in its lower part the production process in terms of labor input as an input-output matrix for a production technique. The technology is the set of all known techniques.

**Table 1. The input-output production process**

Input			Output		
<b>Level</b>					
<b>Capital</b>	<b>Energy</b>	<b>Labor</b>	<b>GDP</b>	<b>CO<sub>2</sub></b>	<b>Capital</b>
<i>K</i>	<i>E</i>	<i>N</i>	<i>X</i>	<i>B</i>	<i>K - D</i>
<b>Intensive units</b>					
<b>Capital</b>	<b>Energy</b>	<b>Labor</b>	<b>GDP</b>	<b>CO<sub>2</sub></b>	<b>Capital</b>
<i>k</i>	<i>e</i>	1	<i>x</i>	<i>b</i>	$(1 - d)k$

Additionally, we define other variables in terms of capital, energy and GDP. We consider the productivity of each input for both outputs. The productivity of capital is equal to the GDP-capital ratio,  $p = X/K$ , the productivity of energy is equal to the GDP-energy ratio,  $s = X/E$ . For CO<sub>2</sub> we define the emissions per unit of capital,  $a = B/K$ , and the emissions per unit of energy,  $m = B/E$ . Two additional useful relationships are the ratios between capital and energy,  $u = K/E$ , and between the CO<sub>2</sub> and GDP,  $o = B/X$ .

The process of capital accumulation, the conversion of profits into capital through investment, expands both outputs. The GDP is either consumed or invested, improving life conditions. The CO<sub>2</sub> emissions are dispersed and accumulated in the atmosphere to the point that it is currently generating global warming. The accumulation of capital involves a technical change which modifies the technical parameters  $k$ ,  $e$ ,  $x$ ,  $b$ , and  $p$ , as well as  $s$ ,  $a$ ,  $m$ ,  $u$ , and  $o$ .

We denote the growth rate of the variable  $x$  as  $g_x$ , that is, the difference between the labor productivity in the year of study and its value in the previous year divided by its value in the previous year. The literature distinguishes four types of technical change based on the growth rates of labor productivity and capital productivity. Purely labor-saving or Harrod-neutral technical change corresponds to a rise in labor productivity,  $g_x > 0$ , and a constant capital productivity,  $g_p = 0$ . Purely capital-saving or Solow-neutral technical change corresponds to a rise in capital productivity,  $g_p > 0$ , and a constant labor productivity,  $g_x = 0$ . Equally in-

put-saving or Hicks-neutral technical change corresponds to an identical change in labor and capital productivities,  $g_x = g_p$ . The combination of a labor-saving,  $g_x > 0$ , and capital-using,  $g_p < 0$ , technical change was labeled by Foley and Michl (1999) as Marx-biased technical change.

From an ecological perspective, it is natural to expand the taxonomy of technical change to include energy. The energy-saving technical change is a rise in energy productivity,  $g_s > 0$ . Purely energy-saving technical change corresponds to a rise in energy productivity with constant labor and capital productivities,  $g_x = 0, g_p = 0$ . Now, a purely labor-saving technical change corresponds to a rise in labor productivity,  $g_x > 0$ , a constant capital productivity,  $g_p = 0$ , and a constant energy productivity,  $g_s = 0$ . A purely capital-saving technical change corresponds to a rise in capital productivity,  $g_p > 0$ , a constant labor productivity,  $g_x = 0$ , and a constant energy productivity,  $g_s = 0$ . Equally input-saving technical change corresponds to an identical change in labor, capital and energy productivities,  $g_x = g_s = g_p > 0$ .

In addition, the Marx-biased technical change can be related to an energy-saving or energy-using pattern. The Marx-biased technical change is also energy-saving when the growth rate of energy productivity increases,  $g_s > 0$ . Otherwise, the Marx-biased technical change is energy-using.

We also define technical change from an environment perspective. Labor environment saving technical change corresponds to a decline of CO<sub>2</sub> emission per labor input,  $g_b < 0$ . Capital environment saving technical change corresponds to a fall in CO<sub>2</sub> emission per capital,  $g_a < 0$ . Energy environment saving technical change corresponds to a decline in CO<sub>2</sub> per energy,  $g_m < 0$ . Hence, the patterns of technical change can be “clean” or “dirty” according to its impact on CO<sub>2</sub> emissions.

It is possible to establish several relationships between the technical change in GDP and CO<sub>2</sub> emissions. For instance, we have  $o = (B/X) = (B/N)(N/X) = (B/K)(K/X) = (B/E)(E/X) = b/x = a/p = m/s$  and  $g_o = g_b - g_x = g_a - g_p = g_m - g_s$ . From this perspective, we can also derive an expanded version of the Kaya identity. The Kaya identity determines the impact of anthropogenic activity on the ecosystem and has a central role in the forecasting of future scenarios for climate change on the IPCC reports. Substituting the population by the number of workers, the Kaya identity is equal to:



$$B \equiv N \frac{X}{N} \frac{E}{X} \frac{B}{E} \quad [1]$$

Using the previous definition of the variables, and computing its rate of growth, we have:

$$g_B \equiv g_N + g_x + g_m - g_s \quad [2]$$

In turn,  $g_s$  can be decomposed in  $g_s \equiv g_p + g_u$ . Thus, we can expand the Kaya identity to consider the role of technical change. Hence:

$$g_B \equiv g_N + g_x + g_m - g_p - g_u \quad [3]$$

The growth rate of CO<sub>2</sub> emissions is decomposed as the sum between the growth rates of labor inputs, labor productivity, and CO<sub>2</sub> emissions per energy minus the growth rates of capital productivity and capital-energy ratio. The expanded Kaya identity provides a link between the expansion of CO<sub>2</sub> emissions and the parameters of technical change that we will explore using empirical data.

Our results below suggest that the elasticity of CO<sub>2</sub> emissions with respect to labor is zero. In this case, we can rewrite the Kaya identity in terms of the capital stock and energy in the following way:

$$B \equiv K \frac{E}{K} \frac{B}{E} \quad [4]$$

Hence, the proportional rate of growth can be written as:

$$g_B \equiv g_K + g_m - g_u \quad [5]$$

Now, the growth rate of CO<sub>2</sub> emissions is positively associated to capital accumulation,  $g_K$ , and the growth rate of CO<sub>2</sub> emissions by unity of energy,  $g_m$ , and negatively associated to the growth rate of the ratio of capital to energy,  $g_u$ . Using [5], we compute the required pace of capital accumulation, energy efficiency and emission intensity to accomplish the emissions targets reported on the INDCs. The analysis is based on the growth rates computed between 1980 and 2014.

### 3. METHODS AND DATA

This study is organized in two main parts. First, the investigation on the regularities between CO<sub>2</sub> emission and economic activity. Second, a simple simulation of the required pace of capital accumulation, energy efficiency, and emission intensity to comply with the emissions targets reported in the INDCs of the Paris Agreement.

The empirical regularities of 84 countries between 1980-2014 are explored through the utilization of local regression, a non-parametric method that employs smoothing to fit curves and surfaces. It estimates a smooth curve between variables without assuming a previous functional form (Cleveland, 1993), allowing us to visualize the relationship between the variables. The basic ideas of the method can be expressed considering the model:

$$y_i = f(x_{1i}, x_{2i}, \dots, x_{pi}) + \varepsilon_i, i = 1, \dots, n \quad [6]$$

where  $y_i$  is the dependent variable and  $x_{pi}$  are the  $p$  independent variables, and  $\varepsilon_i$  are the errors that are assumed to be normally and independently distributed with zero mean and constant variance. The goal is to estimate the regression function  $f$  without references to a previous functional form. This estimation is obtained defining a neighborhood in the space of independent variables which comprises a subset of observations that are closest to  $x$ . The neighborhood size is defined by the bandwidth,  $\kappa$ ,  $0 < \kappa \leq 1$ , that indicates the proportion of points of the total observations that are considered in the computation of the smoothed function. It controls the smoothness of the fit. Generalized Cross Validation and Akaike's Information Criterion were used in the bandwidth definition.

The bandwidth defines a neighborhood in the space of independent variables, the points in this space are weighted according to their distance to  $x$ . The points closest to  $x$  have large weight, the points far from  $x$  have lower weight. The weight function employed in the estimates in this paper was the gaussian function. Moreover, it is necessary to choose the degree of the polynomial of the independent variables that are fitted to the dependent variable. The degree of fit was chosen by a series of local regression plots according to the recommendations by Loader (1999).

This procedure defines the value of the estimated function at the point  $x$ . It is repeated for each point of interest to obtain the estimated function.

Loader (1999) and Cleveland and Devlin (1998) suggest a series of graphs to check the assumptions of normality and constant variance of the residuals. The statistical properties of local regression have been studied, allowing to calculate confidence intervals and to realize tests of hypothesis. Cleveland and Devlin (1988) and Fan and Gijbels (1996) present the basic conception of the statistical inference in local regression. The confidence intervals in the paper are computed locally, pointwise confidence interval. Loader (1999) discusses the difference between pointwise and simultaneous confidence intervals.

In order to evaluate the required economic and technical changes to comply with the Paris Agreement (UNFCCC, 2015), we proceed to analyze the INDCs submitted by each of the twenty major global CO<sub>2</sub> emitters. These countries answer for 77.20% of total emissions in the sample. The great flexibility of the Paris Agreement has led to a lack of homogeneity on the definition of the emission targets. Some countries have defined targets over the level of emissions, while others over the emissions intensity. In addition, the lack of homogeneity extends also to the definition of individual pollutants that will be targeted.

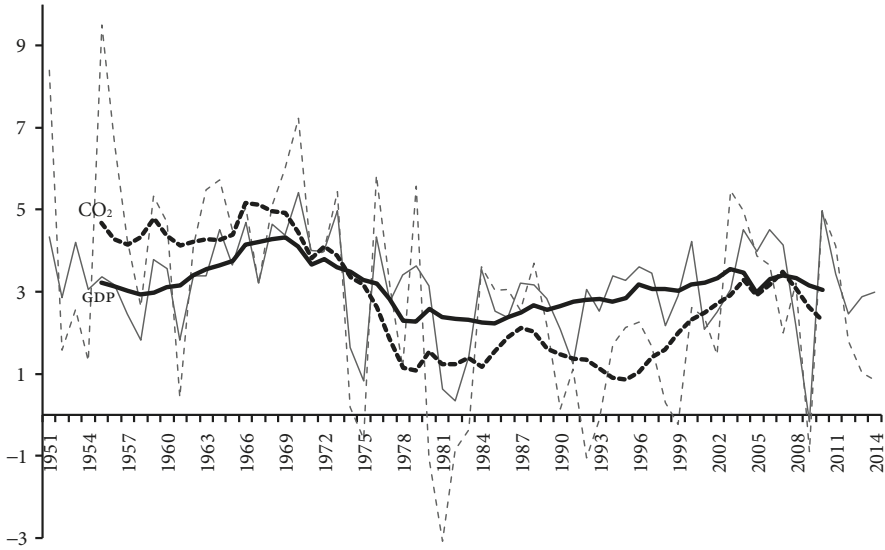
We first homogenize data and categorize the information by computing the target in terms of the level of CO<sub>2</sub> emissions. The CO<sub>2</sub> emissions are the major source of GHG emissions (IPCC, 2018). The EU is one of the Parties at the UNFCCC. The EU and its member have committed to a target of at least 40% domestic reduction in GHG emissions by 2030 compared to 1990, to be jointly fulfilled. As the country-specific responsibilities are unclear, we defined a uniform emission target of 40% applied to all the EU members.

The data set is the EPWT v.6.0<sup>2</sup>. It is organized using the Penn World Table (Feenstra, Inklaar, and Timmer, 2015) and other resources. The source for CO<sub>2</sub> emissions is Boden, Marland, and Andres (2015) that measures the emissions from fossil fuel consumption and cement pro-

---

<sup>2</sup> The EPWT v.6.0 is available from the authors on request. It consists of a file with the definition and methodological procedure for the computation of each variable and a file with the data.

**Figure 1. World growth rates of GDP and CO<sub>2</sub> emission, 1951-2014 (percentages)**



Source: Conference Board (2017) and Boden, Marland, and Andres (2015).

duction. For energy, the data source is World Bank (2017). The EPWT presents homogeneous data for a large number of countries for the years between 1967 and 2014. However, the methodological procedure to compute some of the EPWT variables is subject to criticisms discussed in the respective documentation.

The monetary variables, the GDP, the standardized fixed capital stock and the estimated depreciation are expressed in purchasing power parity, 2011 international dollars. The standardized fixed capital stock and depreciation is computed using the perpetual inventory method. The labor input is the number of employed people. The energy is computed in kilograms of oil equivalent. The CO<sub>2</sub> emissions is measured in kilograms of carbon.

#### 4. EVOLUTION OF THE PRODUCTION OF GDP AND CO<sub>2</sub> EMISSIONS

Figure 1 presents the world growth rates of CO<sub>2</sub> emissions, the broken lines, and the GDP, the continuous lines, in the 1951-2014 period. The

**Table 2. Ranking, share, and growth rate of CO<sub>2</sub> emissions and GDP growth rate by main emitters, 1980 and 2014**

Country	Ranking in B	Share in B (%)	Ranking in X	Ranking in B	Share in B (%)	Ranking in X	
	1980			2014			
China	2	7.5	3	1	28.5	1	
United States	1	24.3	1	2	14.5	2	
India	8	1.6	9	3	6.2	3	
Russia	n.a.	n.a.	n.a.	4	4.7	6	
Japan	3	4.9	2	5	3.4	4	
Germany	n.a.	n.a.	4	6	2.0	5	
Iran	18	0.6	34	7	1.8	18	
Saudi Arabia	n.a.	n.a.	n.a.	8	1.7	17	
South Korea	17	0.7	22	9	1.6	13	
Canada	6	2.3	11	10	1.5	14	
Brazil	14	1.0	10	11	1.5	7	
South Africa	10	1.2	18	12	1.4	29	
Mexico	9	1.4	8	13	1.3	12	
Indonesia	20	0.5	14	14	1.3	10	
United Kingdom	4	3.0	6	15	1.2	9	
Australia	11	1.1	16	16	1.0	19	
Turkey	23	0.4	15	17	1.0	15	
Italy	7	2.0	7	18	0.9	11	
Thailand	34	0.2	28	19	0.9	24	
France	5	2.6	5	20	0.8	8	
Other countries		44.7			23.0		

Note: n.a. - information is not available.

Source: EPWT v.6.0.

	Increase in B (%)	Increase in X (%)
	601.5	1 010.7
	11.2	146.8
	612.8	766.1
	n.a.	n.a.
	28.1	103.2
	n.a.	n.a.
	437.2	925.3
	n.a.	n.a.
	335.4	823.4
	21.2	154.8
	183.2	376.1
	114.4	147.9
	78.9	134.8
	389.7	648.6
	-27.5	121.3
	63.7	222.8
	356.7	360.8
	-17.6	88.3
	687.9	482.3
	-40.0	104.5

thick line shows the nine years mean growth rates and the thin line the annual growth rates. The GDP data disregard the countries that were members of the former Soviet Union. There is a positive correlation for the annual growth rates. However, the growth rates of CO<sub>2</sub> emissions were larger than the GDP growth rates between 1950s and the early 1970s. This period corresponds to the reconstruction of Europe and the industrial expansion of the United States and the former Soviet Union during the Cold War.

In the second half of the 1970s, the GDP began to grow at a higher rate than the CO<sub>2</sub> emissions. Between 1980 and 2014, CO<sub>2</sub> emissions grew by 1.8% per year, while the GDP expanded at 2.6% annually. Hence, there is evidence of relative decoupling between CO<sub>2</sub> emissions and economic growth. A relative decoupling occurs when the growth rate of the environmentally relevant variable is less than the GDP growth for a given period (Organisation for Economic Co-operation and Development, OECD, 2002). We will investigate this evidence starting with cross-country considerations before turning to the evolution of GDP production and CO<sub>2</sub> emissions.

Table 2 compiles the ranking and the share in CO<sub>2</sub> emissions and the GDP ranking of the main CO<sub>2</sub> emitters in 1980 and 2014. It also presents the growth rates of both outputs between these years. There are 163 countries in the sample. China was the country with the largest CO<sub>2</sub> emissions in 2014, generating 28.5% of the total, with United States (US) taking the second position. India expanded very rapidly its emissions, moving to the third place. These

three countries answered for almost half of the CO<sub>2</sub> emissions in 2014, well above the one third observed in 1980.

CO<sub>2</sub> emissions increased for most of the bigger emitters between 1980 and 2014, except for United Kingdom, Italy and France. It indicates the presence of absolute decoupling in these countries, as detailed below. These three countries displayed the lowest GDP growth rate in the period, around 100%. Another group of developed countries, US, Canada and Japan, increased their emissions in less than 30%, while the GDP expanded around 150% in the first two and 100% in Japan.

The developing countries in Asia, with the leadership of Thailand, India and China, multiplied their emissions by a factor between four and seven during the period. The Asian countries also led the expansion in GDP, with impressive growth rates. In Latin America and in Africa, the developing countries raised their emission by a factor between 0.7 and two with GDP growth rates somewhat above the developed countries. There was a link between the GDP growth rate and the rise in CO<sub>2</sub> emissions. The developing countries moved up in the rankings of GDP production and CO<sub>2</sub> emissions.

The direct relationship between GDP and CO<sub>2</sub> emissions observed in Table 2 is a regular pattern for many countries worldwide. In Figure 2 there appears the estimated local regression fits between the logarithms of GDP and CO<sub>2</sub> emissions for 84 countries in 1980 and in 2014. Generally, a country with a higher GDP shows higher CO<sub>2</sub> emissions than a country with a smaller GDP.

There are two important aspects in Figure 2. First, the emissions per unit of GDP diminished between 1980 and 2014, the line for 2014 is below the line for 1980. The elasticity of CO<sub>2</sub> emissions with respect to GDP declined from 1.137 in 1980 to 1.031 in 2014<sup>3</sup>. Interestingly, however, the elasticity remains relatively unchanged for the countries with the lowest GDPs. Second, the total emissions grew in absolute terms as the observed points for most countries and the fitted line moved over time in the northeast direction.

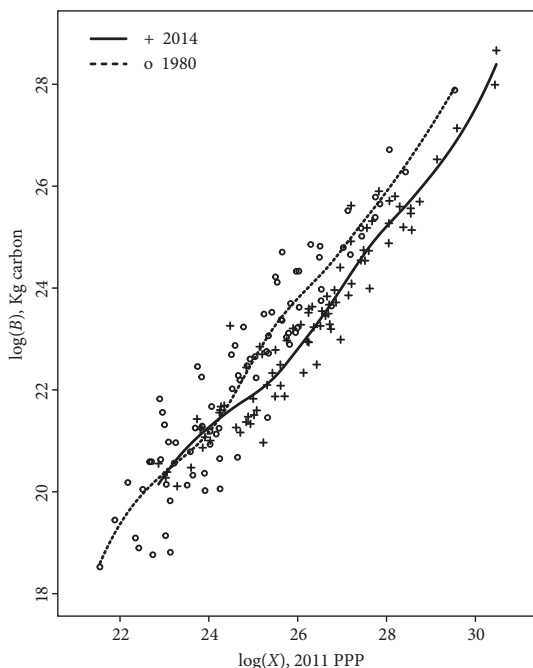
---

<sup>3</sup> The elasticity is the estimated coefficient  $\beta_x$  in the regression  $\ln B_i = \alpha + \beta_x \ln X_i$ , where  $i = 1, 2, \dots, 84$  denotes the country. The coefficients  $\beta_x$  and  $\alpha$  were significant at 1% for 1980 and 2014.

**Figure 2.**

**GDP and CO<sub>2</sub> emissions and the local regression fits for 84 countries, 1980 and 2014**

(local regression parameters: bandwidth = 0.48 for 1980 and 0.46 for 2014, degree = 3)



Source: EPWT v.6.0.

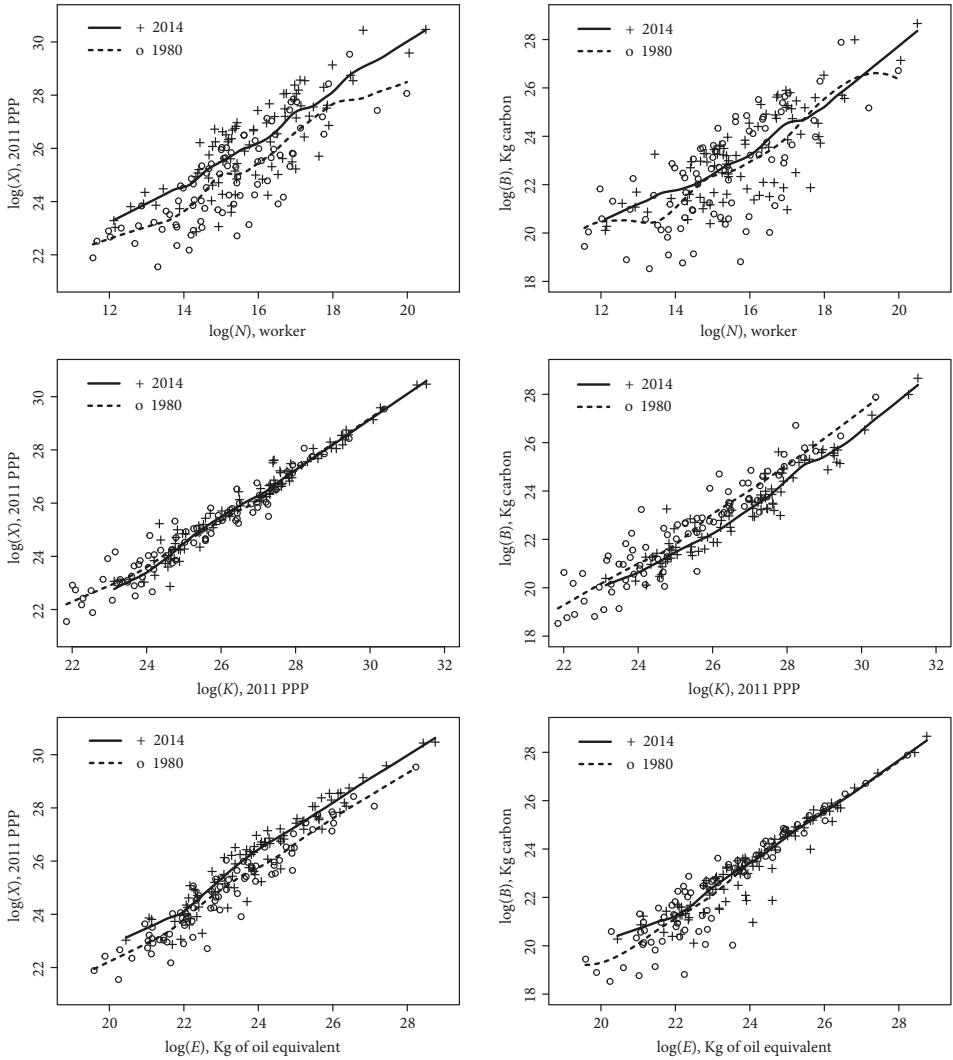
Figure 3 shows the local regression fits between the logarithms of GDP, the left-hand column, and CO<sub>2</sub> emissions, the right-hand column, and the logarithms of labor, capital and energy for 84 countries in 1980 and 2014. The higher use of inputs appears as a movement to the right of the 2014 points in relation to the 1980 ones. All estimated local regression fits display a positive association between inputs and outputs.

There is a greater dispersion between labor inputs and GDP and CO<sub>2</sub> emissions than in the case of capital and energy. The production of the same amount of GDP in 2014 required lower quantities of labor and energy and a similar quantity of capital than in 1980. The estimated local regression fit between labor and energy and GDP for 2014 is above the fit for 1980, while the relationship between capital and GDP displayed minor changes between 1980 and 2014. The CO<sub>2</sub> emissions in 2014 with respect to labor inputs and energy displayed minor changes in comparison to 1980. There was a clear reduction in emissions with respect to capital. Therefore, the average capital stock is getting relatively cleaner,



**Figure 3. Relationship between inputs and GDP and CO<sub>2</sub> emissions and the local regression fits, 1980 and 2014**

(local regression parameters: top left graph: bandwidth = 0.37 for 1980 and 0.35 for 2014, degree = 1; top right graph: bandwidth = 0.33 for 1980 and 0.35 for 2014, degree = 1; middle left graph: bandwidth = 0.37 for 1980 and 0.34 for 2014, degree = 1; middle right graph: bandwidth 0.33 for 1980 and 0.33 for 2014, degree = 1; lower left graph: bandwidth = 0.47 for 1980 and 0.48 for 2014 and degree =1; lower right graph: bandwidth = 0.37 for 1980 and 0.35 for 2014, and degree = 1)



Source: EPWT v.6.0.

which reveals a possible movement towards the adoption of capital environment saving technical change.

We estimated elasticities of GDP and CO<sub>2</sub> emissions with relation to labor, capital and energy. All the input elasticities of GDP are positive and significant at the 1% level<sup>4</sup>. The capital elasticity of GDP is the largest and increased between 1980 and 2014, from 0.567 to 0.667. The energy elasticity of GDP is around 0.195, almost the same value for the two years. The labor elasticity of GDP decreased from 0.204 to 0.148. The CO<sub>2</sub> emissions elasticities with respect to capital and energy are significant at 1% in both years. The capital elasticity of CO<sub>2</sub> emissions increased from 0.415 to 0.546 between 1980 and 2014, while the energy elasticity of CO<sub>2</sub> emissions diminished from 0.971 to 0.563. The labor elasticity of CO<sub>2</sub> emissions was negative, significant at 1% in 1980, and not statistically different from zero at five percent of significance in 2014.

Changes in the employment of labor, while capital and energy are held constant, do not affect the CO<sub>2</sub> emissions. Schor (2010) suggests that lower working hours may reduce unemployment and CO<sub>2</sub> emissions. Lower working hours would require the employment of labor, which is a clean input.

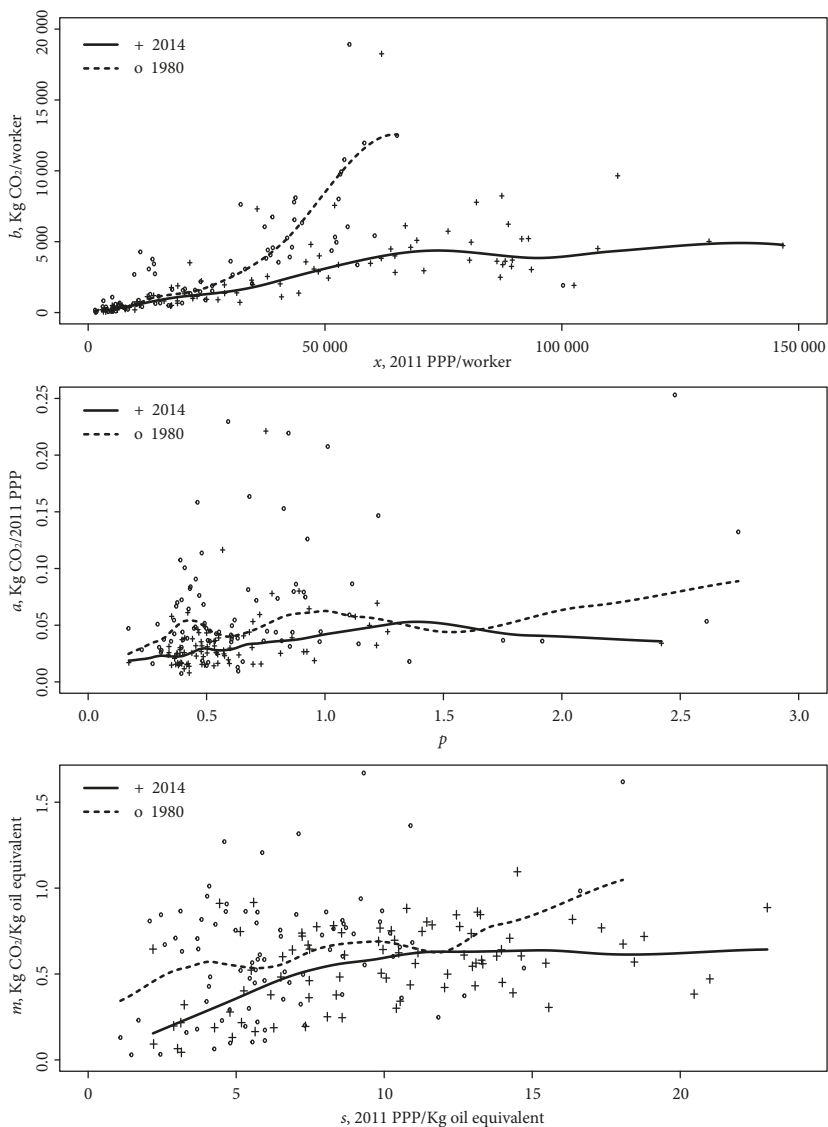
Figure 4 presents the relationship between the productivities of each input and the corresponding emission intensities for 1980 and 2014. One can observe an improvement in the relationship between productivity and emissions per input in the period. There is a positive association between labor productivity and the emissions per worker, but its elasticity is remarkably smaller in 2014. It may be related to the improvements in the CO<sub>2</sub> emissions per unit of capital. The countries with high-energy productivity are also those with relatively high CO<sub>2</sub> emissions per unit of energy. The capital productivity and the emissions-capital ratio are positively correlated. There is a fall in CO<sub>2</sub> emissions per input after certain threshold consistent with an environment Kuznets curve.

---

<sup>4</sup> The coefficients are  $\ln Y_j = \alpha + \beta_{NY} \ln N_j + \beta_{KY} \ln K_j + \beta_{EY} \ln E_j$ , where  $Y$  is either GDP or CO<sub>2</sub> emissions and  $j$  is either 1980 or 2014. The coefficients  $\beta_{NY}$ ,  $\beta_{KY}$  and  $\beta_{EY}$  are the labor, capital and energy elasticities. In the four regressions  $\alpha$  is significant and the coefficients of determination,  $R^2$ , are greater than 0.92.

**Figure 4. Relationship between input productivity and input emission intensity, 1980 and 2014**

(local regression parameters: upper graph: bandwidth = 0.42 for 1980 and 0.55 for 2014, degree = 3; middle graph: bandwidth = 0.47 for 1980 and 0.47 for 2014, degree = 3; lower graph: 0.46 for 1980 and 0.44 for 2014, degree = 1)



Source: EPWT v.6.0.

In Figure 5, the upper graphs relate capital-labor ratio with labor productivity and CO<sub>2</sub> emissions per worker for 1980 and 2014. In the lower graphs, the energy-labor ratio replaces the capital-labor ratio. The local regression fits for 1980 and 2014 display two results. First, there is a concave shape in the relationship between labor productivity and capital-labor ratio and between CO<sub>2</sub> emissions per worker and the capital-labor ratio. Similar results occur in the relationship between labor productivity and energy-labor ratio and between CO<sub>2</sub> emissions per worker and energy-labor ratio. Again, these results are congruent with an environment Kuznets curve. Second, a given level of capital-labor and energy-labor ratios produced higher labor productivity and lower amount of CO<sub>2</sub> per worker in 2014 in relation to 1980, which is compatible with relative decoupling.

Figure 6 relates labor productivity with capital and energy productivities on the left column and the CO<sub>2</sub> emissions per worker with CO<sub>2</sub> emissions per capital and energy on the right column for 1980 and 2014. There is a negative correlation between capital productivity and labor productivity, and a positive association between energy productivity and labor productivity.

In the case of CO<sub>2</sub> emissions per unit of inputs, there is a direct relationship between emissions per capital and emissions per worker and a concave relationship between emissions per capital and the emissions per energy. Thus, in the growth process there is an increase in labor and energy productivities and a decline in capital productivity that is consistent with a Marx-biased pattern of technical change.

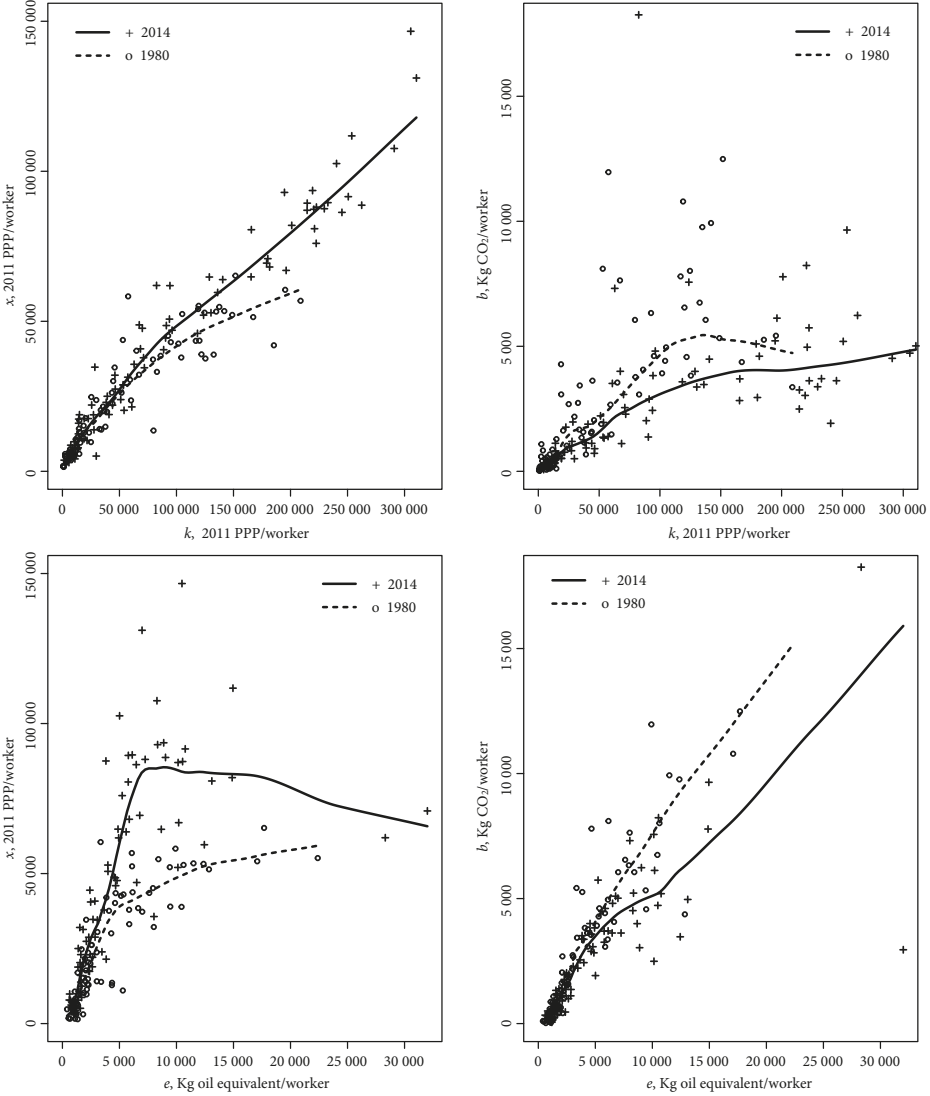
#### **4.1. Patterns of technical change and the evidence of absolute decoupling**

In recent years, an important research field that analyses the evidence of absolute decoupling of CO<sub>2</sub> emissions from economic growth has emerged. According to OECD (2002, p. 11), absolute decoupling occurs “when the growth rate of the environmentally damaging variable is zero or negative” despite GDP growth. The evidence of decoupling is surrounded by controversies that are at the center of the debate on the growth limits.

The evidence of absolute decoupling is heterogeneous (Naqvi and Zwickl, 2017); while some studies focus on aggregate CO<sub>2</sub> and GDP,

**Figure 5. Relationship between capital-labor and energy-labor ratios and labor productivity and CO<sub>2</sub> emissions per worker, 1980 and 2014**

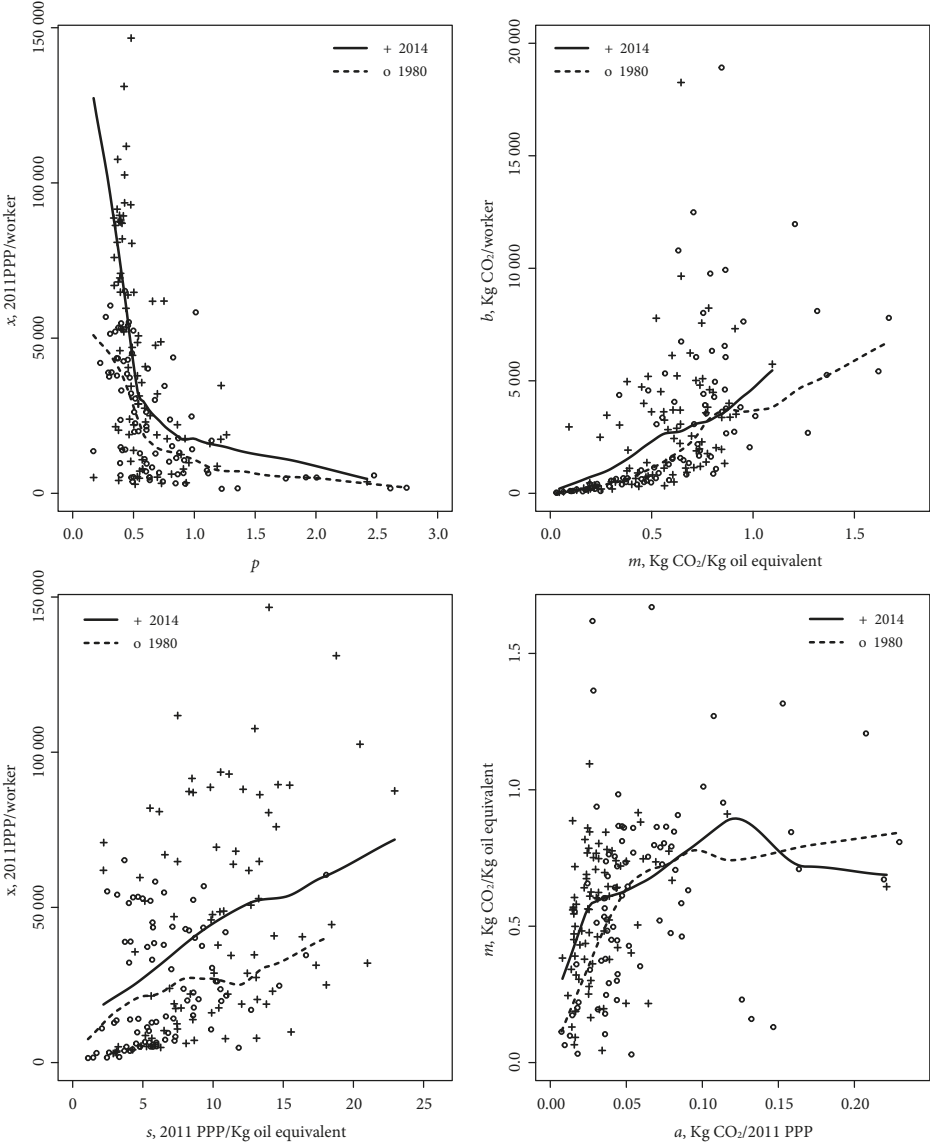
(local regression parameters: top left graph: bandwidth = 0.47 for 1980 and 0.47 for 2014, degree = 1; top right graph: bandwidth = 0.34 for 1980 and 0.36 for 2014, degree = 1; lower left graph: bandwidth = 0.37 for 1980 and 0.34 for 2014, degree = 1; lower right graph: bandwidth 0.39 for 1980 and 0.42 for 2014, degree = 1)



Source: EPWT v.6.0.

**Figure 6. Relationship between input productivities and CO<sub>2</sub> emissions per input, 1980 and 2014**

(local regression parameters: bandwidths = 0.53 and 0.55; 0.55 and 0.57; 0.53 and 0.55; 0.56 and 0.57, degree = 1)



Source: EPWT v.6.0.

others investigate the multisectoral emissions. From our production framework and the decomposition of the expanded Kaya identity we explore the evidence of absolute decoupling looking at the patterns of technical change.

Table 3 shows the information on technical change for the biggest CO<sub>2</sub> emitters for the years without and with absolute decoupling between 1980 and 2014, highlighting the parameters of the expanded Kaya identity. After investigating the data by visual inspection, we computed the correlation between the time series. The years with absolute decoupling displayed a negative correlation between the logarithms of GDP and CO<sub>2</sub> emissions.

There is no evidence of absolute decoupling between CO<sub>2</sub> emissions and economic growth for 12 countries for the period. Most of them were developing countries. China, Brazil, Indonesia and South Korea followed a Marx-biased and an energy saving technical change. Thailand displayed a Marx-biased and energy using technical change and raising CO<sub>2</sub> emissions per GDP. India, Russia, Japan, Turkey, Iran and Saudi Arabia exhibited an input-saving technical change in capital, labor and energy; Mexico showed declining labor and capital productivities and raising energy productivity. These countries, except Mexico, displayed a labor environment using technical change.

Table 3 reveals a positive association between the growth rates of labor productivity, energy-labor ratio and CO<sub>2</sub> emissions per worker. The ratio between CO<sub>2</sub> emissions and energy rose in developing countries with a Marx-biased technical change, plus India and Turkey. The other countries experienced an energy environment saving technical change. Most countries also experienced a capital environment saving technical change except for Iran, Saudi Arabia, Thailand and Turkey.

Five developed countries and South Africa shifted from no absolute decoupling to absolute decoupling during the period of study. It occurred around the financial crisis, excluding United Kingdom. We first investigate the years without absolute decoupling. Italy displayed a Marx-biased, energy saving technical change. United States, Canada, Australia and United Kingdom followed an input saving technical change. South Africa showed a labor and capital saving and an energy using technical change.

In the United States, Canada, and United Kingdom occurred an environment saving technical change in the three inputs. Interesting, labor

productivity rose in these countries without a correspondent increase in the energy-labor ratio, which is explained by the relatively high growth rate of energy productivity. From the decomposition of the expanded “Kaya identity”, we observe that the three countries moved towards a process of clean technical change. However, this environment saving technical change may reflect the change in the composition of the output with the relocation of pollution intensive activities to developing countries.

The increase in the CO<sub>2</sub> emissions is explained by a scale effect, since the growth rate of the labor input overcomes the green technical progress observed in the period. South Africa displayed a labor environment using, capital environment using, and energy environment saving technical change. South Africa had the highest CO<sub>2</sub>-GDP ratio in 2014 due to the high share of coal in its energy production (International Energy Agency, 2015). It may be related with the decline of the capital-energy ratio in South Africa, which also occurred in the biggest fossil fuel producers, Russia, Saudi Arabia, and Iran, and Turkey.

Table 3 also presents information of the pattern of technical change for eight countries that exhibited periods of absolute decoupling. Germany and France displayed absolute decoupling for the whole period with information available.

United States, Germany and France showed a pattern of technical change characterized by the increase in labor, capital and energy productivities. Australia, United Kingdom and Italy followed a Marx-biased, and energy saving technical change. Canada and South Africa exhibited a labor and capital using, and energy saving technical change.

The eight countries with absolute decoupling share some regularities. All of them displayed labor, capital and energy environment saving technical change. They also presented a high growth rate in the capital-energy ratio and in energy productivity, indicating an increase in the energy efficiency of the capital stock. In contrast to the countries listed at the top of Table 3, most countries with absolute decoupling reduced their energy-labor ratio. The drawback was the negative or the reduced growth rate of labor productivity.

The developing countries need to expand their labor productivity and reduce their labor emissions. It would require a rise in the capital-labor ratio and a decline in the energy-labor ratio, which would increase the capital-energy ratio.



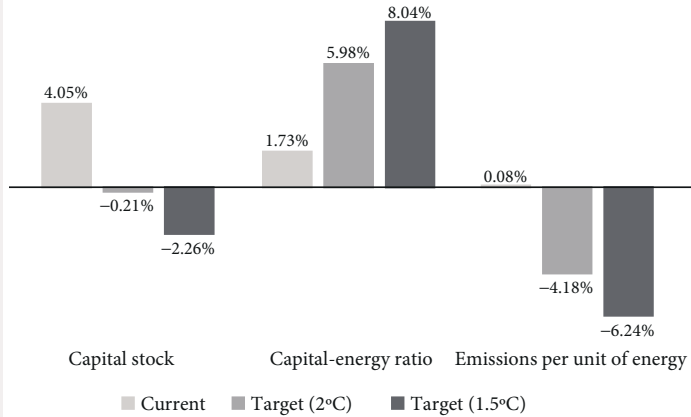
**Table 3. Technical change and the expanded Kaya identity for the main CO<sub>2</sub> emitters in periods without and with absolute decoupling, annual compound growth rate (percentage), 1980-2014**

Country	No absolute decoupling	$g_s$	$g_a$	$g_b$	$g_o$	$g_e$
China	1980-2014	2.27	-3.93	4.23	-1.35	3.31
United States	1980-2005	2.15	-2.28	-0.52	-2.31	-0.36
India	1980-2014	2.18	-0.52	3.26	-0.57	1.65
Russia	2007-2014	3.48	-0.26	0.13	-3.86	0.52
Japan	1980-2014	1.34	-1.17	0.42	-1.36	0.44
Iran	1980-2014	1.47	0.76	2.05	-1.9	2.48
Saudi Arabia	1987-2014	1.63	1.75	0.22	-2.41	1
South Korea	1980-2014	1	-2.91	2.37	-2.21	3.58
Canada	1980-2008	1.86	-2.25	-0.78	-2.29	-0.35
Brazil	1980-2014	1.71	-1.59	0.84	-1.53	0.66
South Africa	1980-2009	-0.13	1.12	0.52	0.08	0.56
Mexico	1980-2014	0.51	-1.24	-0.98	-0.8	-0.69
Indonesia	1980-2014	1.82	-3.4 <sup>a/</sup>	2.38	-1.25	1.8
United Kingdom	1980-1989	1.58	-1.76	-0.66	-1.99	-0.24
Australia	1980-2009	1.51	-1.36	0	-1.6	0.08
Turkey	1980-2014	0.52	1.48	2.8	-0.02	2.31
Italy	1980-2004	0.61	-2.29	0.31	-1.24	0.94
Thailand	1980-2014	-0.15	0.14	4.49	0.89	3.75
Country	Absolute decoupling	$g_s$	$g_a$	$g_b$	$g_o$	$g_e$
United States	2005-2014	1.87	-2.23	-1.42	-2.44	-0.85
Germany	1991-2014	3.05	-2.6	-1.53	-3.66	-0.92
Canada	2008-2014	0.56	-3.7	-1.79	-1.69	-0.66
South Africa	2009-2014	2.79	-6.04	-3.85	-3.39	-3.26
United Kingdom	1989-2014	3.02	-3.84	-1.91	-3.75	-1.19
Australia	2009-2014	2.8	-4.68	-3.73	-4.33	-2.21
Italy	2004-2014	3.86	-5.38	-3.66	-5.3	-2.22
France	1980-2014	1.42	-3.4	-2.03	-3.61	0.15

	Expanded Kaya identity					
	$g_x$	$g_p$	$g_u$	$g_m$	Technical effect	$g_N$
	5.58	-2.57	4.84	0.91	4.22	1.5
	1.79	0.03	2.12	-0.16	-0.52	1.34
	3.83	0.05	2.13	1.61	3.26	2.52
	4	3.61	-0.13	-0.39	0.13	0.19
	1.78	0.19	1.15	-0.02	0.42	0.31
	3.95	2.66	-1.19	-0.44	2.04	2.9
	2.63	4.17	-2.54	-0.78	0.22	4.03
	4.58	-0.7	1.7	-1.21	2.37	1.96
	1.51	0.04	1.82	-0.43	-0.78	1.63
	2.37	-0.06	1.77	0.18	0.84	2.22
	0.43	1.04	-1.17	-0.05	0.51	2.21
	-0.18	-0.44	0.95	-0.29	-0.98	2.69
	3.62	-2.34	4.16	0.57	2.37	2.3
	1.34	0.24	1.34	-0.42	-0.66	0.7
	1.59	0.24	1.27	-0.08	0	2.01
	2.83	1.51	-0.99	0.49	2.8	1.66
	1.55	-1.05	1.66	-0.63	0.31	0.51
	3.6	-0.75	0.6	0.74	4.49	1.58
	$g_x$	$g_p$	$g_u$	$g_m$	Technical effect	$g_N$
	1.02	0.21	1.66	-0.57	-1.42	0.34
	2.13	1.06	1.99	-0.61	-1.53	0.42
	-0.1	-2.01	2.57	-1.13	-1.79	1.07
	-0.47	-2.65	5.44	-0.6	-3.86	3.32
	1.83	-0.1	3.12	-0.72	-1.91	0.61
	0.59	-0.35	3.15	-1.53	-3.74	1.96
	1.64	-0.08	3.94	-1.44	-3.66	-0.26
	1.57	0.2	1.22	-2.19	-2.04	0.53

Note:  
a/ – period  
1982-2014.  
Source: EPWT  
v.6.0.

**Figure 7.**  
**The modified Kaya**  
**identity, annual**  
**compound growth**  
**rate (percentages)**



Source: EPWT v.6.0.

## 4.2. Abatement efforts under the Paris Agreement

Given our modified Kaya identity in Equation [4], we now turn the attention to an estimation of the required pace of capital accumulation, energy efficiency and emission intensity to accomplish the emission targets reported in the INDCs of the Paris Agreement.

Climate scenarios suggest that to limit temperature increase below 2.0°C above pre-industrial era, global CO<sub>2</sub> emissions must decline by about 20% from 2010 levels by 2030 and reach net zero around 2075. For the limited overshoot of 1.5°C increase, global CO<sub>2</sub> emissions must decline by about 45% by 2030, reaching net zero around 2050 (IPCC, 2018). Figure 7 presents the decomposition of global CO<sub>2</sub> emissions in terms of the annual compound growth rates of the capital stock, capital-energy ratio and emissions by unit of energy on the current pace and the two possible scenarios: A target of limiting temperature to 2.0°C and 1.5°C, respectively. The global CO<sub>2</sub> emissions include the full sample.

Holding capital accumulation and the energy efficiency at the current pace (4.05% and 1.73%, respectively), the CO<sub>2</sub> emissions per unit of energy must decline -4.18% per year in order to achieve the global target of limiting temperature to 2.0°C. To accomplish the target of 1.5°C, the emissions intensity must decline -6.24% per year. In both cases, the required pace is well below the current tendency. Moreover,

holding capital accumulation and the emissions intensity at the current rates (4.05% and 0.08%, respectively), the capital-energy ratio must improve at 5.98% and 8.04% per year to comply with the efforts for limiting temperature to 2.0°C. and 1.5°C. The required pace is at least three times the current tendency.

In turn, if the energy efficiency and the emissions intensity remain growing at the current tendency (1.73% and 0.08, respectively), the pace of capital accumulation must decline  $-0.21\%$  per year to accomplish the target of 2.0°C. The decline in capital accumulation is sharper under the 1.5°C. target, in which the required growth rate is  $-2.26\%$  per year. Therefore, in the absence of energy or environment technical change, the commitment defined by the Paris Agreement is unlikely to be achieved. It would require sharp changes in the well-being of the current generation.

Table 4 shows the modified Kaya identity to the top twenty global polluters, based on the INDCs submitted to the Paris Agreement. All the estimates are based on the efforts for limiting temperature below 2.0°C. After the end of the Kyoto Protocol, the current Agreement is a unilateral vision in which the Parties establish their own voluntary target of emissions reductions. China and Brazil have the most ambitious targets among the main polluters, a reduction of 60% and 43% of the 2005 level of emissions, respectively. In turn, Iran and Saudi Arabia, two of the top ten polluters, have not committed with an emission target. With the exception of United States that is estimated to achieve the target by 2025, all the remaining countries are committed to achieve the target by 2030.

Holding capital accumulation and the energy efficiency growing at the current pace, the growth rate of the emissions per unit of energy,  $g_m$ , must decline in all countries. China ( $-13.79\%$ ), Brazil ( $-8.82\%$ ), South Korea ( $-7.78\%$ ), Thailand ( $-6.72\%$ ), Indonesia ( $-6.32\%$ ), and India ( $-5.64\%$ ) are those countries in which the required improvements in emissions intensity are relatively greater. Developed countries with a current tendency to improve the emission intensity required relatively small abatement efforts.

If capital accumulation and emission intensity remain growing at the current pace, China (19.54%), Indonesia (11.05%), Brazil (10.77%), and India (9.38%) are those countries in which the capital-energy ratio must

**Table 4. Ranking, share, emission targets, and growth rate of the Kaya identity components by main emitters**

Countries	Ranking in <i>B</i>	Share in <i>B</i> (%)	Current growth rates		
			$g_k$	$g_u$	$g_m$
China	1	28.50	9.83	4.84	0.91
United States	2	14.50	2.54	1.97	-0.26
India	3	6.20	6.31	2.13	1.61
Russia	4	4.70	2.75	-0.13	-0.39
Japan	5	3.40	1.86	1.15	-0.02
Germany	6	2.00	1.49	2.00	-0.61
Iran	7	1.80	4.15	-1.19	-0.44
Saudi Arabia	8	1.70	4.33	-1.65	-0.91
South Korea	9	1.60	7.28	1.70	-1.21
Canada	10	1.50	3.03	1.91	-0.54
Brazil	11	1.50	4.62	1.77	0.18
South Africa	12	1.40	2.14	-0.19	-0.13
Mexico	13	1.30	2.91	0.95	-0.29
Indonesia	14	1.30	8.36	4.16	0.57
United Kingdom	15	1.20	2.30	2.61	-0.62
Australia	16	1.00	3.25	1.52	-0.29
Turkey	17	1.00	2.94	-0.99	0.49
Italy	18	0.90	2.58	2.29	-0.84
Thailand	19	0.90	5.93	0.60	0.74
France	20	0.80	1.87	1.22	-2.19

Note: n.a. - Data not available; BaU - Business as usual scenario; \* - Considering zero the other two growth rates.

Source: EPWT v.6.0 and UNFCCC (2015).

	Emission target	$g_B$	Required growth rates		
			$g_{K^*}$	$g_{U^*}$	$g_{M^*}$
	60% of 2005 level	-8.80	-4.87	19.54	-13.79
	26% of 2005 level	-1.84	0.39	4.12	-2.41
	21% of BaU level	-1.46	-0.94	9.38	-5.64
	25% of 1990 level	n.a.	n.a.	n.a.	n.a.
	26% of 2013 level	-1.70	-0.53	3.55	-2.42
	40% of 1991 level	-1.58	1.03	2.46	-1.07
	No target	n.a.	n.a.	n.a.	n.a.
	No target	n.a.	n.a.	n.a.	n.a.
	30% of BaU level	-2.20	0.71	8.27	-7.78
	30% of 2005 level	-1.98	0.47	4.47	-3.10
	43% of 2005 level	-5.97	-4.38	10.77	-8.82
	31% of BaU level	-2.29	-2.36	4.30	-4.62
	25% of BaU level	-1.78	-0.54	4.40	-3.74
	26% of BaU level	-2.12	1.47	11.05	-6.32
	40% of 1990 level	-1.43	1.80	3.11	-1.12
	26% of 2005 level	-1.97	-0.17	4.94	-3.71
	21% of BaU level	-1.46	-2.94	4.89	-5.39
	40% of 1990 level	-1.53	1.60	3.27	-1.82
	20% of BaU level	-1.38	-1.52	8.06	-6.72
	40% of 1990 level	-1.84	1.57	1.51	-2.48

increase at a higher pace. This pattern also holds for most developing countries, even those with a current tendency to improve their capital-energy ratio. The European countries require a relatively low growth in its energy efficiency rates to comply with the target.

In turn, holding energy efficiency and the emission intensity growing at the current rates, countries with a relatively high current rate of capital accumulation, and relatively low rate of energy and environment technical changes, require sharper reductions in the pace of accumulation to comply with their emission targets. China (-4.37%), Brazil (-4.38%), Turkey (-2.94%), and South Africa (-2.36%) are among those countries which require a greater decline in capital accumulation.

Interestingly, however, Indonesia can increase capital accumulation while achieving its emission target. This is possible given its current improvements in the capital-energy ratio. Reflecting the current movements towards energy and environment saving technical change, developed countries such as United States, France, Italy, United Kingdom, and Germany, also require relatively small reductions in the pace of capital accumulation in order to comply with the emission target.

The simple calculation based on a modified Kaya identity suggests that the individual voluntary definition of the emission target under the Paris Agreement has resulted in an unequal distribution of the future abatement efforts among developing and developed countries. This result is in the same line of the qualitative evaluation of the Paris Agreement of Ari and Sari (2017), which argue that the Agreement has ignored a relevant climate policy literature that has been debating a number of different proposals to the allocation of abatement responsibilities.

Excluding China, developing countries may be the cheapest place to achieve any given level of CO<sub>2</sub> emissions control through energy and environment saving technological change. The developed countries are stuck with costly energy and transportation investment based on fossil fuel energy. Most developing countries are just in the process of installing these systems (Foley, 2003). However, if left to the free play of their structural forces, developing countries may never comply with the emission target while achieving the developed phase. The developing countries may need external resources to design energy and environment saving investments in the form of what the literature has called as environmental big push.

## 5. CONCLUSIONS

This study contributes to the literature by employing a nonparametric method to investigate regularities in the production of GDP and CO<sub>2</sub> emissions for 84 countries between 1980-2014. We also propose an expanded version of the Kaya identity to evaluate the distribution of abatement efforts under the Paris Agreement. The main regularities are:

1. Economic growth raises both GDP and CO<sub>2</sub> emissions. We found evidence of a relative decoupling between economic growth and CO<sub>2</sub> emissions for the world economy after the mid-1970s. However, the pace of emissions implies that CO<sub>2</sub> will continue to accumulate in the atmosphere.
2. GDP rose with the expansion in all inputs, labor, capital and energy. The CO<sub>2</sub> emissions rose with the increase in capital and energy, but not with the addition of labor input. Therefore, it may be possible to expand the production of GDP, keeping constant the CO<sub>2</sub> emissions by raising only labor inputs. It would reduce the capital-labor ratio, the energy-labor ratio, and the labor productivity and would increase the productivities of capital and energy. This result is consistent with some debates on reducing working time among ecological economists.
3. The Kaldor's stylized fact of an increasing capital-labor ratio is confirmed across countries and over time. The expansion in the employment of capital inputs was greater than the fall in CO<sub>2</sub> emissions per capital.
4. Over time, the CO<sub>2</sub> emissions-GDP and CO<sub>2</sub> emissions-labor ratios increased in the early stages of development and after some threshold they began to decline, which is consistent with an environment Kuznets curve.
5. Developed countries have a low CO<sub>2</sub> emissions growth rate, with some of them presenting evidence of absolute decoupling, while developing countries with high GDP growth have a high growth rate of CO<sub>2</sub> emissions. The patterns of technical change are mixed among them.
6. The countries with absolute decoupling exhibited a movement towards environment-saving technical change, with remarkable improvements in the energy-labor ratio and the capital-energy ratio. Labor productivity is growing at relatively lower rate in these countries.
7. To sustain a relatively high growth rate of labor productivity in parallel with a sharp reduction in the use of energy per unit of labor, developing



countries need to rise their energy efficiency at a relatively high speed. Even so, it is unlikely that such a rate will be sufficient for developing countries to achieve the economic maturity with respect to the biophysical limits of the planet.

The modified Kaya identity suggests that the individual voluntary definition of the emission target under the Paris Agreement has resulted in an unequal distribution of the future abatement efforts among developing and developed countries. In the absence of energy or environment-saving technical change, sharper reductions in the pace of accumulation in developing countries are required to comply with individual emission targets. Therefore, if left to the free play of their structural forces, these countries may never comply with the emission target while achieving a developed phase. The principle of common but differentiated responsibilities and respective capabilities, highlighted by the UNFCCC, must be carefully reconsidered by policy makers. ◀

## REFERENCES

- Ari, I., and Sari, R. (2017). Differentiation of developed and developing countries for the Paris Agreement. *Energy Strategy Review*, 18(December), pp. 175-182. <http://doi.org/10.1016/j.esr.2017.09.016>
- Baumgärtner, S., Dyckhoff, H., Faber, M., Proops, J., and Schiller, J. (2001). The concept of joint production and ecological economics. *Ecological Economics*, 36(3), pp. 365-372. [https://doi.org/10.1016/S0921-8009\(00\)00260-3](https://doi.org/10.1016/S0921-8009(00)00260-3)
- Boden, A., Marland, G., and Andres, R. (2015). *Global, Regional, and National Fossil-Fuel CO<sub>2</sub> Emissions*. Carbon Dioxide Information Analysis Center, Oak Ridge National Laboratory, U.S. Department of Energy, Oak Ridge, Tenn., U.S.A. [online] Available at: <[http://cdiac.ornl.gov/trends/emis/tre\\_coun.html](http://cdiac.ornl.gov/trends/emis/tre_coun.html)> [Accessed 15 June 2017]. [http://doi.org/10.3334/CDIAC/00001\\_V2015](http://doi.org/10.3334/CDIAC/00001_V2015)
- Brock, W.A., and Taylor, M.S. (2010). The green Solow model. *Journal of Economic Growth*, 15(2), pp. 127-153. <http://doi.org/10.1007/s10887-010-9051-0>
- Cleveland, W. (1993). *Visualizing Data*. Summit, Hobert Press.
- Cleveland, W.S., and Devlin, S.J. (1988). Locally weighted regression: An Approach to regression analysis by local fitting. *Journal of the American Statistical Association*, 83(403), pp. 596-610. <http://doi.org/10.1080/01621459.1988.10478639>

- Conference Board (2017). *The Conference Board Total Economy Database*. [online] Available at: <https://www.conference-board.org/data/economydatabase/index.cfm?id=27762> [Accessed 2 May 2018].
- Fan, J., and Gijbels, I. (1996). *Local Polynomial Modelling and its Applications*. New York: Chapman & Hall.
- Feenstra, R.C., Inklaar, R., and Timmer, M.P. (2015). The next generation of the Penn World Table. *American Economic Review*, 105(10), pp. 3150-3182. <http://dx.doi.org/10.1257/aer.20130954>
- Foley, D. (2003). *Unholy Trinity: Labor, Capital and Land in the New Economy*. London: Routledge.
- Foley, D., and Michl, T. (1999). *Growth and Distribution*. Cambridge: Harvard University Press.
- Intergovernmental Panel on Climate Change, IPCC (2018). Summary for Policymakers. In: V. Masson-Delmotte, P. Zhai, H.O. Pörtner, D. Roberts, J. Skea, P. Shukla, A. Pirani, W. Moufouma-Okia, C. Péan, R. Pidcock, S. Connors, J. Matthews, Y. Chen, X. Zhou, M. Gomis, E. Lonnoy, T. Maycock, M. Tignor, and T. Waterfield (eds.), *Global Warming of 1.5°C. An IPCC Special Report on the impacts of global warming of 1.5°C above pre-industrial levels and related global greenhouse gas emission pathways, in the context of strengthening the global response to the threat of climate change, sustainable development, and efforts to eradicate poverty*. Geneva: World Meteorological Organization.
- Kaldor, N. (1961). Capital accumulation and economic growth. In: F.A. Lutz and D.C. Hague (eds.), *The Theory of Capital* (pp. 177-222). International Economic Association Series. London: Palgrave Macmillan. [https://doi.org/10.1007/978-1-349-08452-4\\_10](https://doi.org/10.1007/978-1-349-08452-4_10)
- Kemp-Benedict, E. (2018). Dematerialization, decoupling, and productivity change. *Ecological Economics*, 150(8), pp. 204-216. <https://doi.org/10.1016/j.ecolecon.2018.04.020>
- Kurz, H. (2006). Goods and bads: Sundry observations on joint production, waste disposal, and renewable and exhaustible resource. *Progress in Industrial Ecology: An International Journal*, 3(4), pp. 280-301. <http://doi.org/10.1504/PIE.2006.011738>
- Loader, C. 1999. *Local Regression and Likelihood*. New York: Springer-Verlag.
- Naqvi, A., and Zwickl, K. (2017). Fifty shades of green: Revisiting decoupling by economic sectors and air pollutants. *Ecological Economics*, 133(3), pp. 111-126. <https://doi.org/10.1016/j.ecolecon.2016.09.017>

- Organisation for Economic Co-operation and Development, OECD (2002). *Report on Indicators to Measure Decoupling of Environmental Pressure from Economic Growth*. Paris: OECD.
- International Energy Agency (2015). *Energy Efficiency Outlook for South Africa-Sizing up the Opportunity*. [online] Available at: <<https://www.iea.org/publications/freepublications/publication/EnergyEfficiencyPotential-inSouthAfrica.pdf>> [Accessed 12 June 2018].
- Rezai, A., Taylor, L., and Mechler, R. (2012). Ecological macroeconomics: An application to climate change. *Ecological Economics*, 85(1), pp. 69-76. <https://doi.org/10.1016/j.ecolecon.2012.10.008>
- Schor, J. 2010. *Plenitude: The New Economics of True Wealth*. New York: Penguin.
- Taylor, L., Rezai, A., and D. Foley, D. (2016). An integrated approach to climate change, income distribution, employment, and economic growth. *Ecological Economics*, 121(1), pp. 196-205. <https://doi.org/10.1016/j.ecolecon.2015.05.015>
- United Nations Framework Convention on Climate Change, UNFCCC (2015). *Adoption of the Paris Agreement*. [online] Available at: <<https://unfccc.int/resource/docs/2015/cop21/eng/l09r01.pdf>> [Accessed 12 May 2018].
- World Bank (2017). *World Bank Open Data*. [online] Available at: <<http://data.worldbank.org>> [Accessed 3 May 2017].