

Figura 9 – Pterigóide: (A) *Sphaenorhynchus palustris* (MNRJ42656); (B) *Sphaenorhynchus prasinus* (MZUESC6861); (C) *Sphaenorhynchus dorisae* (ZUEC11096); (D) *Sphaenorhynchus pauloalvini* (MNRJ4323); (E) *Scarthyla goinorum* (TG2724). Escala de 1 mm.

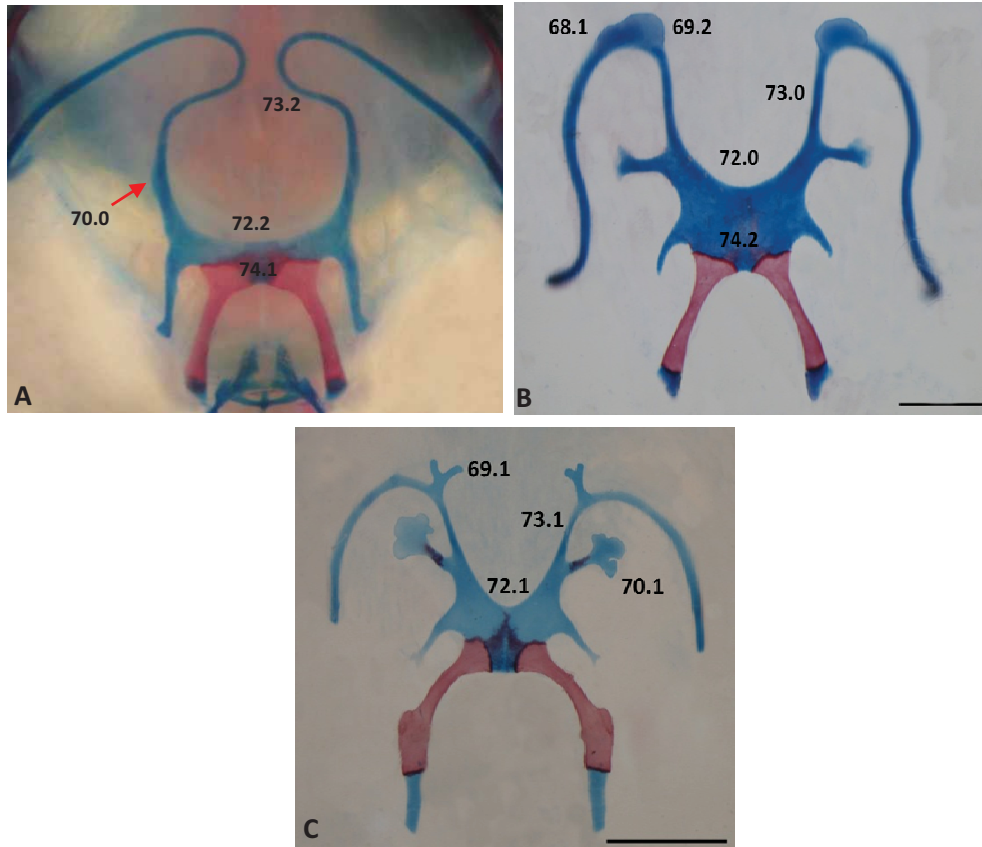


Figura 14 - Aparatus hióide. (A) *Sphaenorhynchus prasinus* (EI 42, fêmea) (B) *Scarthyla goinorum* (TG2724, 1 mm, fêmea); (C) *Scinax alter* (MCP 1670, 2 mm, macho).